



MLS 6819703 Residential

\$233,000

1,824 sq ft
2 bedrooms
2 baths

23098 County 2
Shevlin MN 56676

Status: Active

Description:

Beautiful 2+ Bedroom, 2 Bath Log Home on 5+ Private Acres

Experience northwoods living at its finest in this upgraded log home situated on over 5 private acres overlooking a stunning valley just south of Shevlin. This property combines rustic charm with thoughtful, high-quality improvements focused on durability, energy efficiency, and comfort.

Home Features & Upgrades

- Exterior Restoration: The entire log cabin exterior was professionally sanded, resurfaced, sealed, and stained—an extensive, long-lasting upgrade.
- Heating Efficiency: A professionally installed Wilkening wood stove and a complete HVAC overhaul provide exceptional warmth and efficiency.
- Water Quality: A whole-home, saltless water filtration system has been added for clean, improved water.
- Roof & Insulation:
 - Main roof fully gutted and rebuilt with new insulation and baffles, boosting the R-value to R-29.
 - Sunroom roof raised 4 inches and redone with tin roofing, increasing insulation to R-30.
- Interior Comfort: New vapor barrier, sealed sidewalls, and upgraded upstairs west wall including new windows, insulation, and sheathing. Fresh drywall and paint make the home move-in ready.

Additional Improvements

- New gutters installed on both sides of the home
- Upstairs bathroom updated with new plumbing and restored clawfoot tub
- New entry and storm doors at both the front and kitchen entrances
- New flooring in the upstairs bedroom
- New washer and dryer (2025)
- Sunroom converted into a 3rd bedroom with seller-made improvements
- Bathrooms on both the main level and upper level
- radon mitigation in place and septic is compliant.

Outbuildings & Land

- Multiple outbuildings including a fenced chicken shack, wood shed, and garage with electric plus 220-amp service for welding

Located just one mile from excellent fishing on Lake LaSalle, this beautifully upgraded log home offers privacy, comfort, and the perfect Northwoods lifestyle.

Interested in this property? Please contact the listing agent at 218-237-3333 or info@affinityrealestate.com. The listing agent is a member of the Affinity Real Estate network, which is a part of the Better Homes and Gardens Real Estate First Choice Service of Minnesota, Inc. Broker Reciprocity (sm) program, allowing us to display other broker's listings on our website. All properties are subject to prior sale, change or withdrawal.

Additional Details:

Year Built 1986
Lot Acres 5.74
Lot Dimensions 500x500



Call Affinity Real Estate

218-237-3333

info@affinityrealestate.com



Affinity Real Estate - 600 Park Avenue South - Park Rapids MN 56470



website: www.AffinityRealEstate.com | email: info@affinityrealestate.com | office: 218-237-3333 | fax: 218-237-3377

Affinity
REAL ESTATE INC

\$233,000
MLS 6819703 Residential
23098 County 2
Shevlin MN 56676



website: www.AffinityRealEstate.com | email: info@affinityrealestate.com | office: 218-237-3333 | fax: 218-237-3377



\$233,000
 MLS 6819703 Residential
 23098 County 2
 Shevlin MN 56676



website: www.AffinityRealEstate.com | email: info@affinityrealestate.com | office: 218-237-3333 | fax: 218-237-3377



\$233,000
 MLS 6819703 Residential
 23098 County 2
 Shevlin MN 56676



website: www.AffinityRealEstate.com | email: info@affinityrealestate.com | office: 218-237-3333 | fax: 218-237-3377



\$233,000
 MLS 6819703 Residential
 23098 County 2
 Shevlin MN 56676



website: www.AffinityRealEstate.com | email: info@affinityrealestate.com | office: 218-237-3333 | fax: 218-237-3377

Affinity
REAL ESTATE INC

\$233,000
MLS 6819703 Residential
23098 County 2
Shevlin MN 56676



website: www.AffinityRealEstate.com | email: info@affinityrealestate.com | office: 218-237-3333 | fax: 218-237-3377

Affinity
REAL ESTATE INC

\$233,000
MLS 6819703 Residential
23098 County 2
Shevlin MN 56676



website: www.AffinityRealEstate.com | email: info@affinityrealestate.com | office: 218-237-3333 | fax: 218-237-3377



\$233,000
MLS 6819703 Residential
23098 County 2
Shevlin MN 56676



website: www.AffinityRealEstate.com | email: info@affinityrealestate.com | office: 218-237-3333 | fax: 218-237-3377



\$233,000
 MLS 6819703 Residential
 23098 County 2
 Shevlin MN 56676



website: www.AffinityRealEstate.com | email: info@affinityrealestate.com | office: 218-237-3333 | fax: 218-237-3377

Affinity
REAL ESTATE INC

\$233,000
MLS 6819703 Residential
23098 County 2
Shevlin MN 56676



website: www.AffinityRealEstate.com | email: info@affinityrealestate.com | office: 218-237-3333 | fax: 218-237-3377

Affinity
REAL ESTATE INC

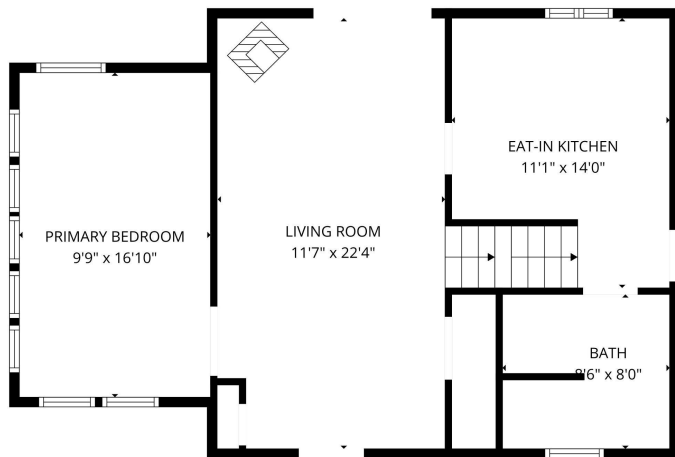
\$233,000
MLS 6819703 Residential
23098 County 2
Shevlin MN 56676



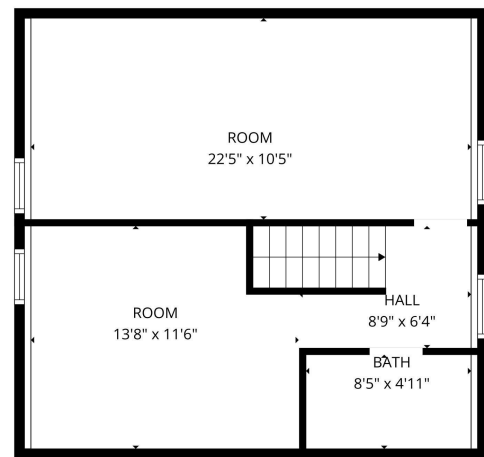
website: www.AffinityRealEstate.com | email: info@affinityrealestate.com | office: 218-237-3333 | fax: 218-237-3377

Affinity
REAL ESTATE INC

\$233,000
MLS 6819703 Residential
23098 County 2
Shevlin MN 56676



FLOOR PLAN CREATED BY CUBICASA APP. MEASUREMENTS DEEMED HIGHLY RELIABLE BUT NOT GUARANTEED.

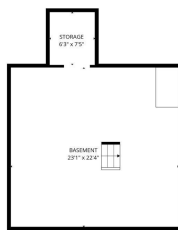


FLOOR PLAN CREATED BY CUBICASA APP. MEASUREMENTS DEEMED HIGHLY RELIABLE BUT NOT GUARANTEED.



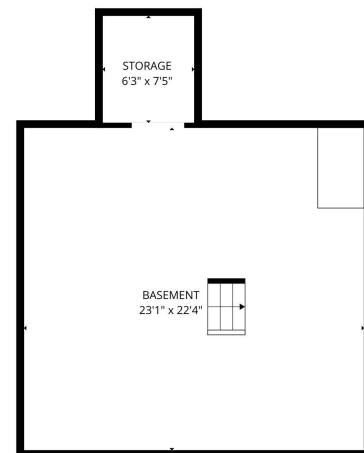
1st floor

2nd floor



Basement 1

FLOOR PLAN CREATED BY CUBICASA APP. MEASUREMENTS DEEMED HIGHLY RELIABLE BUT NOT GUARANTEED.



FLOOR PLAN CREATED BY CUBICASA APP. MEASUREMENTS DEEMED HIGHLY RELIABLE BUT NOT GUARANTEED.

website: www.AffinityRealEstate.com | email: info@affinityrealestate.com | office: 218-237-3333 | fax: 218-237-3377

Affinity
REAL ESTATE INC

\$233,000
MLS 6819703 Residential
23098 County 2
Shevlin MN 56676