



MLS 6819834 Residential

**\$1,075,000**

3,815 sq ft  
5 bedrooms  
4 baths

3307 Island Drive  
Alexandria MN 56308

Status: Active

**Description:**

Sellers offering \$15,000 toward buyer closing costs with an acceptable offer!!

Cross the bridge and feel the shift. Life slows down, the water surrounds you, and this beautifully updated island home on Lake Le Homme Dieu welcomes you into a setting few ever experience. Set on nearly an acre with approximately 350 feet of natural shoreline, this year-round residence offers protected lagoon frontage with a permanent dock—providing calmer waters and added convenience throughout the seasons. Spend more time enjoying the lake and less time managing it. Inside, 3,815 finished square feet blend warmth and functionality. The open-concept kitchen and living area anchor the home, featuring a large L-shaped island with seating for four, stainless steel appliances, double wall ovens, walk-in pantry, and a natural gas fireplace for cozy evenings. Seamless flow from the dining area to the outdoor kitchen and deck creates effortless indoor-outdoor entertaining. The upper-level hosts four bedrooms, including a vaulted primary suite with exposed beam detail and water views overlooking the dock. One upper-level bedroom currently serves as a lake-facing office. The lower level adds a fifth bedroom with new egress window and a theater room accented with wood beams—ideal for movie nights or game days. Outdoor living is where this property truly shines:

- Lakeside outdoor kitchen and entertaining area
- Firepit near the shoreline
- 350ft of lakefront with approximately 4' depth at the dock
- Beautiful sunset views from the front of the home
- Mature trees offering seasonal privacy

The heated four-stall garage with in-floor heat and drains includes dedicated boat storage on the lakeside, while the widened driveway provides additional parking for guests. Mechanical updates include reverse osmosis system (2017), new water heater (2024), and new well pressure tank (2025). See supplements for the truly extensive improvement list. Located just 5 miles from downtown Alexandria, with boat access to restaurants, marina fuel, and resorts on the chain. Snowmobile trail access located just down the shoreline to enjoy the 360+ miles of trails in the county during the winter. An island association maintains the water in the lagoon with an aeration system, weed control and future maintenance. An exceptional opportunity to own on a private nine-home island setting while staying close to everything the Alexandria lakes area has to offer. Yamaha boat available for purchase separately.

**Additional Details:**

Year Built 1970

Lot Acres 0.95

Listed By 300,190,358  
Edina Realty, Inc.

Affinity Real Estate Inc. participates in the Regional Multiple Listing Service of Minnesota, Inc Broker Reciprocity (sm) program, allowing us to display other broker's listings on our website. All properties are subject to prior sale, change or withdrawal.

Tax Year 2025



**Call Affinity Real Estate**

**218-237-3333**

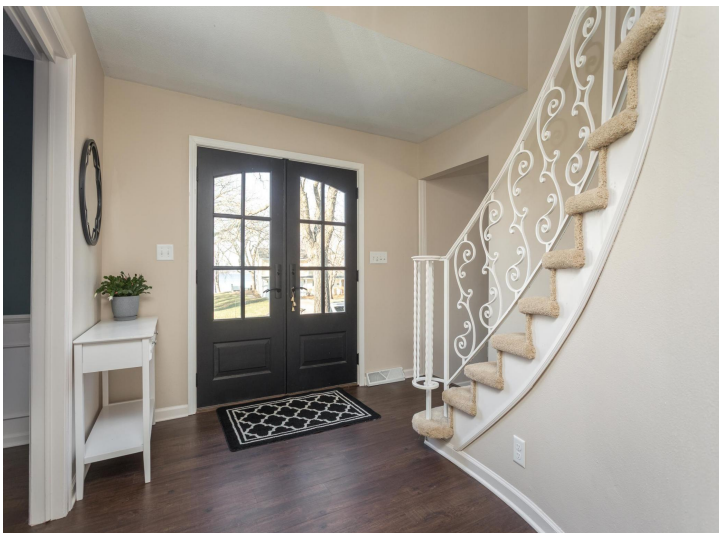
**info@affinityrealestate.com**



**Affinity Real Estate - 600 Park Avenue South - Park Rapids MN 56470**

**Additional Features:**

**Fuel:** Array **Heat:** Forced Air, Fireplace(s), In-Floor Heating



website: [www.AffinityRealEstate.com](http://www.AffinityRealEstate.com) | email: [info@affinityrealestate.com](mailto:info@affinityrealestate.com) | office: 218-237-3333 | fax: 218-237-3377

**Affinity**  
REAL ESTATE INC

**\$1,075,000**  
MLS 6819834 Residential  
3307 Island Drive  
Alexandria MN 56308



website: [www.AffinityRealEstate.com](http://www.AffinityRealEstate.com) | email: [info@affinityrealestate.com](mailto:info@affinityrealestate.com) | office: 218-237-3333 | fax:218-237-3377

**Affinity**  
REAL ESTATE INC

**\$1,075,000**  
MLS 6819834 Residential  
3307 Island Drive  
Alexandria MN 56308



website: [www.AffinityRealEstate.com](http://www.AffinityRealEstate.com) | email: [info@affinityrealestate.com](mailto:info@affinityrealestate.com) | office: 218-237-3333 | fax:218-237-3377

**Affinity**  
REAL ESTATE INC

**\$1,075,000**  
MLS 6819834 Residential  
3307 Island Drive  
Alexandria MN 56308



website: [www.AffinityRealEstate.com](http://www.AffinityRealEstate.com) | email: [info@affinityrealestate.com](mailto:info@affinityrealestate.com) | office: 218-237-3333 | fax:218-237-3377



**\$1,075,000**  
MLS 6819834 Residential  
3307 Island Drive  
Alexandria MN 56308



website: [www.AffinityRealEstate.com](http://www.AffinityRealEstate.com) | email: [info@affinityrealestate.com](mailto:info@affinityrealestate.com) | office: 218-237-3333 | fax: 218-237-3377

**Affinity**  
REAL ESTATE INC

**\$1,075,000**  
MLS 6819834 Residential  
3307 Island Drive  
Alexandria MN 56308



website: [www.AffinityRealEstate.com](http://www.AffinityRealEstate.com) | email: [info@affinityrealestate.com](mailto:info@affinityrealestate.com) | office: 218-237-3333 | fax:218-237-3377

**Affinity**  
REAL ESTATE INC

**\$1,075,000**  
MLS 6819834 Residential  
3307 Island Drive  
Alexandria MN 56308



website: [www.AffinityRealEstate.com](http://www.AffinityRealEstate.com) | email: [info@affinityrealestate.com](mailto:info@affinityrealestate.com) | office: 218-237-3333 | fax:218-237-3377

**Affinity**  
REAL ESTATE INC

**\$1,075,000**  
MLS 6819834 Residential  
3307 Island Drive  
Alexandria MN 56308



website: [www.AffinityRealEstate.com](http://www.AffinityRealEstate.com) | email: [info@affinityrealestate.com](mailto:info@affinityrealestate.com) | office: 218-237-3333 | fax:218-237-3377



**\$1,075,000**  
MLS 6819834 Residential  
3307 Island Drive  
Alexandria MN 56308



website: [www.AffinityRealEstate.com](http://www.AffinityRealEstate.com) | email: [info@affinityrealestate.com](mailto:info@affinityrealestate.com) | office: 218-237-3333 | fax:218-237-3377



**\$1,075,000**  
MLS 6819834 Residential  
3307 Island Drive  
Alexandria MN 56308



website: [www.AffinityRealEstate.com](http://www.AffinityRealEstate.com) | email: [info@affinityrealestate.com](mailto:info@affinityrealestate.com) | office: 218-237-3333 | fax:218-237-3377

**Affinity**  
REAL ESTATE INC

**\$1,075,000**  
MLS 6819834 Residential  
3307 Island Drive  
Alexandria MN 56308



website: [www.AffinityRealEstate.com](http://www.AffinityRealEstate.com) | email: [info@affinityrealestate.com](mailto:info@affinityrealestate.com) | office: 218-237-3333 | fax:218-237-3377

**Affinity**  
REAL ESTATE INC

**\$1,075,000**  
MLS 6819834 Residential  
3307 Island Drive  
Alexandria MN 56308



website: [www.AffinityRealEstate.com](http://www.AffinityRealEstate.com) | email: [info@affinityrealestate.com](mailto:info@affinityrealestate.com) | office: 218-237-3333 | fax: 218-237-3377



**\$1,075,000**  
MLS 6819834 Residential  
3307 Island Drive  
Alexandria MN 56308

website: [www.AffinityRealEstate.com](http://www.AffinityRealEstate.com) | email: [info@affinityrealestate.com](mailto:info@affinityrealestate.com) | office: 218-237-3333 | fax:218-237-3377



**\$1,075,000**  
MLS 6819834 Residential  
3307 Island Drive  
Alexandria MN 56308

website: [www.AffinityRealEstate.com](http://www.AffinityRealEstate.com) | email: [info@affinityrealestate.com](mailto:info@affinityrealestate.com) | office: 218-237-3333 | fax:218-237-3377



**\$1,075,000**  
MLS 6819834 Residential  
3307 Island Drive  
Alexandria MN 56308

website: [www.AffinityRealEstate.com](http://www.AffinityRealEstate.com) | email: [info@affinityrealestate.com](mailto:info@affinityrealestate.com) | office: 218-237-3333 | fax:218-237-3377



**\$1,075,000**  
MLS 6819834 Residential  
3307 Island Drive  
Alexandria MN 56308