



MLS 6819852 Land

**\$499,900**

160 Acres  
Raw Land

TBD County 32  
Park Rapids MN 56470

Status: Pending

**Description:**

The crown jewel of all things recreational! Extremely rare 160 acre offering with a prime location just a few minutes north of Park Rapids. An ultimate big woods acreage featuring groomed trails, 2 food plot areas and a perfect ratio of high ground, low ground and everything in between. For the hunter; vast bedding areas, incredible pinch points and ambush sites galore. The deer sign is everywhere! Prior selective logging with heavy regenerative growth holds more than just the deer. This property is also home to turkeys, grouse, bears and more. Set in the pines is an established basecamp area with a 16x24 storage shed. Borders 80 acres of county land on the north and 100's of acres on the south providing a playground like no other. Electric and fiber optic internet available and on site. Gorgeous property! An absolute must see.

**Additional Details:**

Lot Acres	160
Lot Dimensions	2640 x 2640
School District	1384
Taxes	\$2,374
Taxes with Assessments	\$2,374
Tax Year	2025

**Additional Features:**

**Driving Directions:**

From Park Rapids: Take Hwy 71 North to a left on County 32. Proceed 1.5+ miles to property on left.



Listed By:  
Affinity Real Estate Inc.

Affinity Real Estate Inc. participates in the Regional Multiple Listing Service of Minnesota, Inc Broker Reciprocity (sm) program, allowing us to display other broker's listings on our website. All properties are subject to prior sale, change or withdrawal.



**Call Affinity Real Estate**

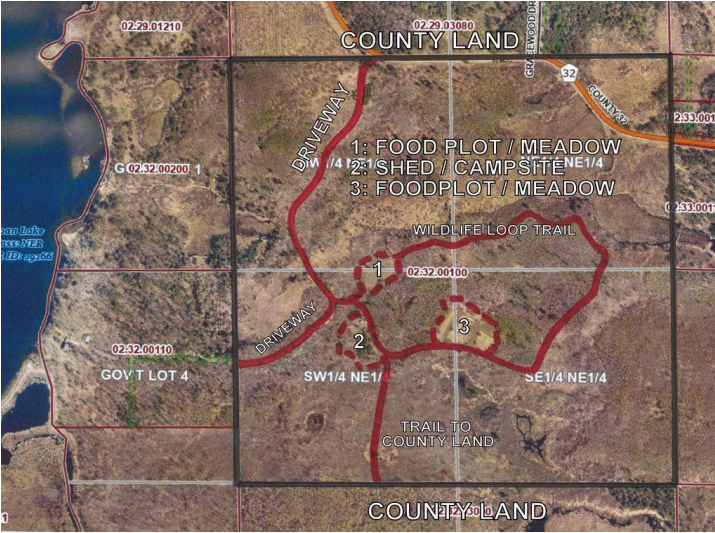
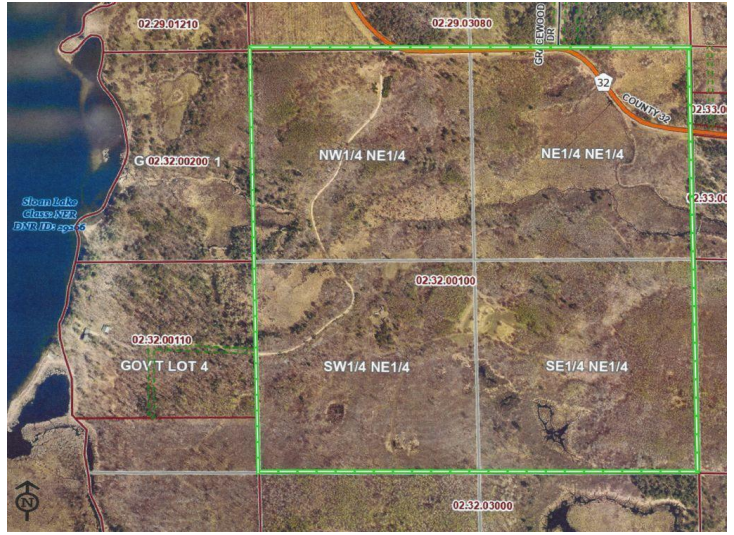
**218-237-3333**

**info@affinityrealestate.com**



**Affinity Real Estate - 600 Park Avenue South - Park Rapids MN 56470**





website: [www.AffinityRealEstate.com](http://www.AffinityRealEstate.com) | email: [info@affinityrealestate.com](mailto:info@affinityrealestate.com) | office: 218-237-3333 | fax: 218-237-3377



**\$499,900**  
 MLS 6819852 Land  
 TBD County 32  
 Park Rapids MN 56470





website: [www.AffinityRealEstate.com](http://www.AffinityRealEstate.com) | email: [info@affinityrealestate.com](mailto:info@affinityrealestate.com) | office: 218-237-3333 | fax: 218-237-3377



**\$499,900**  
 MLS 6819852 Land  
 TBD County 32  
 Park Rapids MN 56470





website: [www.AffinityRealEstate.com](http://www.AffinityRealEstate.com) | email: [info@affinityrealestate.com](mailto:info@affinityrealestate.com) | office: 218-237-3333 | fax: 218-237-3377



**\$499,900**  
 MLS 6819852 Land  
 TBD County 32  
 Park Rapids MN 56470





website: [www.AffinityRealEstate.com](http://www.AffinityRealEstate.com) | email: [info@affinityrealestate.com](mailto:info@affinityrealestate.com) | office: 218-237-3333 | fax: 218-237-3377



**\$499,900**  
MLS 6819852 Land  
TBD County 32  
Park Rapids MN 56470





website: [www.AffinityRealEstate.com](http://www.AffinityRealEstate.com) | email: [info@affinityrealestate.com](mailto:info@affinityrealestate.com) | office: 218-237-3333 | fax: 218-237-3377



**\$499,900**  
MLS 6819852 Land  
TBD County 32  
Park Rapids MN 56470





website: [www.AffinityRealEstate.com](http://www.AffinityRealEstate.com) | email: [info@affinityrealestate.com](mailto:info@affinityrealestate.com) | office: 218-237-3333 | fax: 218-237-3377



**\$499,900**  
 MLS 6819852 Land  
 TBD County 32  
 Park Rapids MN 56470





website: [www.AffinityRealEstate.com](http://www.AffinityRealEstate.com) | email: [info@affinityrealestate.com](mailto:info@affinityrealestate.com) | office: 218-237-3333 | fax: 218-237-3377



**\$499,900**  
 MLS 6819852 Land  
 TBD County 32  
 Park Rapids MN 56470



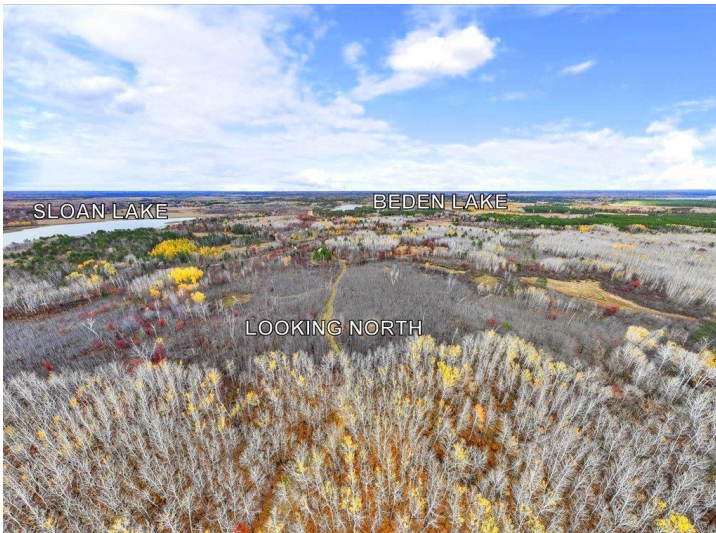


website: [www.AffinityRealEstate.com](http://www.AffinityRealEstate.com) | email: [info@affinityrealestate.com](mailto:info@affinityrealestate.com) | office: 218-237-3333 | fax: 218-237-3377



**\$499,900**  
 MLS 6819852 Land  
 TBD County 32  
 Park Rapids MN 56470





website: [www.AffinityRealEstate.com](http://www.AffinityRealEstate.com) | email: [info@affinityrealestate.com](mailto:info@affinityrealestate.com) | office: 218-237-3333 | fax: 218-237-3377



**\$499,900**  
 MLS 6819852 Land  
 TBD County 32  
 Park Rapids MN 56470