



MLS 6819913 Residential

\$303,301

1,144 sq ft
3 bedrooms
2 baths

221 US Highway 71
Sebeka MN 56477

Status: Active

Description:

Discover country living at its finest on this beautiful 4-acre property featuring a well-cared for 3-bedroom, 2-bath home. Thoughtfully maintained, this home offers comfortable living with an attached tuck-under garage for convenience and additional storage. The tarred driveway provides a clean, smooth approach to the home and outbuildings, adding both durability and curb appeal. The property also features an expansive yard, offering plenty of space for outdoor activities, gardening, pets, or hobbies. The home has seen significant improvements, including updated roof, windows, exterior doors, and siding in 2014, a new A/C unit in 2019, a new furnace in 2024, and new flooring in the upper-level main living area in 2021 delivering modern comfort, efficiency, and peace of mind for years to come. The 4 acres include multiple outbuildings, highlighted by a heated shop perfect for year-round projects, mechanical work, or a small business, as well as a second shop with a concrete floor for added workspace, storage, or hobbies. Whether you're looking for room to expand, space for animals, or peaceful rural living, this property offers endless possibilities. Enjoy privacy, functionality, and pride of ownership all in one exceptional package.

Additional Details:

Year Built	1987
Lot Acres	4.02
Lot Dimensions	4.02 acres
Garage Stalls	2
School District	2285
Taxes	\$3,076
Taxes with Assessments	\$3,076
Tax Year	2025

Additional Features:

Basement: Partial, Concrete, Unfinished **Fuel:** Array **Garage:** 2 **Heat:** Forced Air, In-Floor Heating **Sewer:** Septic System Compliant - No **Water:** Drilled, Well **Air Conditioning:** Central Air

Driving Directions:

South of Sebeka on Hwy 71 to address on right.



Listed By:
eXp Realty

Affinity Real Estate Inc. participates in the Regional Multiple Listing Service of Minnesota, Inc Broker Reciprocity (sm) program, allowing us to display other broker's listings on our website. All properties are subject to prior sale, change or withdrawal.



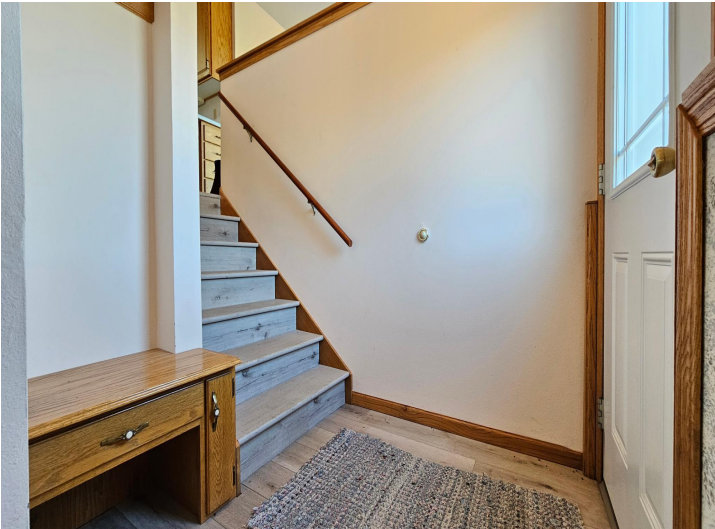
Call Affinity Real Estate

218-237-3333

info@affinityrealestate.com



Affinity Real Estate - 600 Park Avenue South - Park Rapids MN 56470



website: www.AffinityRealEstate.com | email: info@affinityrealestate.com | office: 218-237-3333 | fax: 218-237-3377

Affinity
REAL ESTATE INC

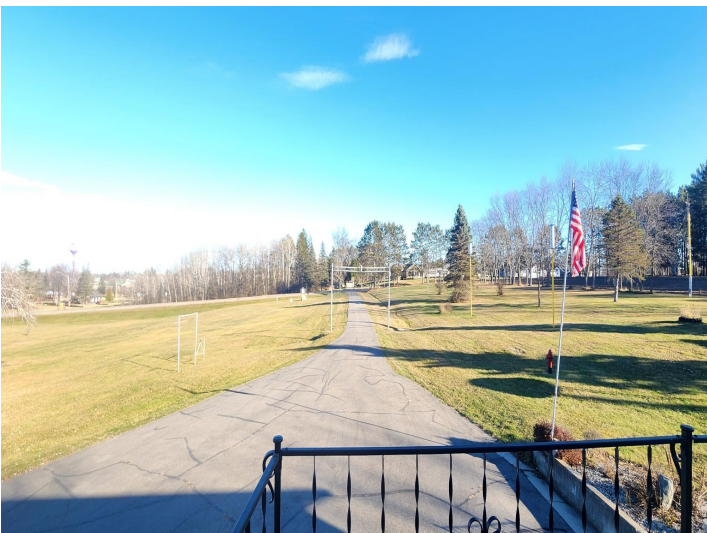
\$303,301
MLS 6819913 Residential
221 US Highway 71
Sebeka MN 56477



website: www.AffinityRealEstate.com | email: info@affinityrealestate.com | office: 218-237-3333 | fax: 218-237-3377

Affinity
REAL ESTATE INC

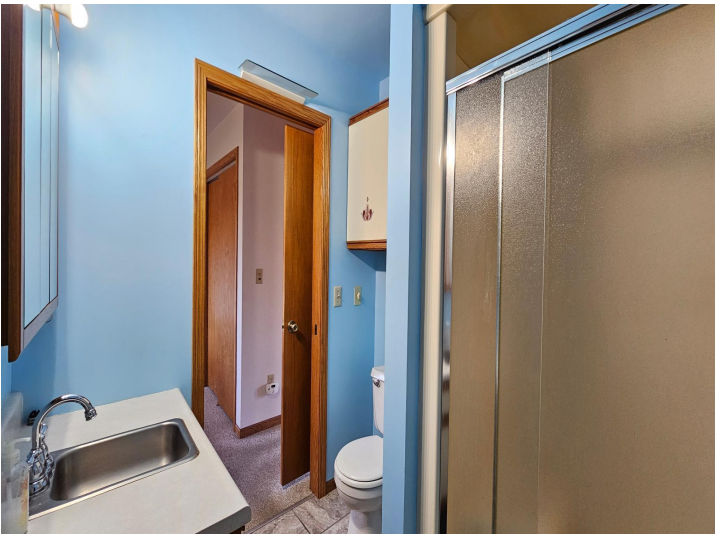
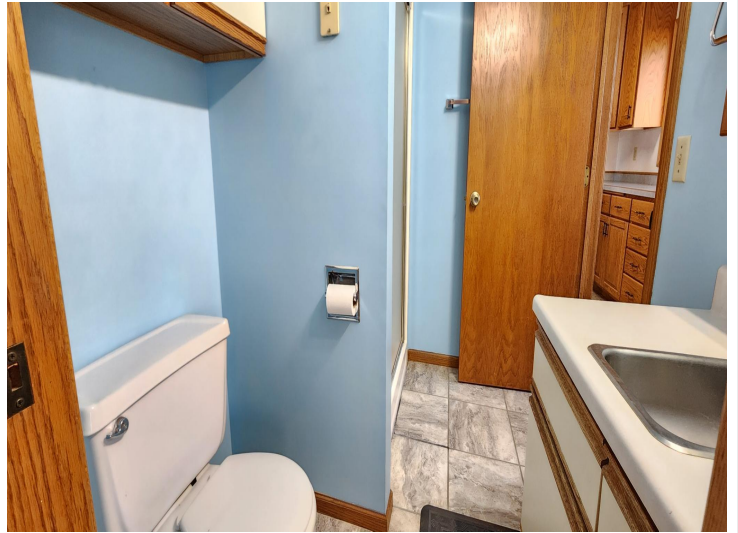
\$303,301
MLS 6819913 Residential
221 US Highway 71
Sebeka MN 56477



website: www.AffinityRealEstate.com | email: info@affinityrealestate.com | office: 218-237-3333 | fax: 218-237-3377

Affinity
REAL ESTATE INC

\$303,301
MLS 6819913 Residential
221 US Highway 71
Sebeka MN 56477



website: www.AffinityRealEstate.com | email: info@affinityrealestate.com | office: 218-237-3333 | fax: 218-237-3377

Affinity
REAL ESTATE INC

\$303,301
MLS 6819913 Residential
221 US Highway 71
Sebeka MN 56477



website: www.AffinityRealEstate.com | email: info@affinityrealestate.com | office: 218-237-3333 | fax: 218-237-3377

Affinity
REAL ESTATE INC

\$303,301
MLS 6819913 Residential
221 US Highway 71
Sebeka MN 56477



website: www.AffinityRealEstate.com | email: info@affinityrealestate.com | office: 218-237-3333 | fax: 218-237-3377



\$303,301
 MLS 6819913 Residential
 221 US Highway 71
 Sebeka MN 56477



website: www.AffinityRealEstate.com | email: info@affinityrealestate.com | office: 218-237-3333 | fax: 218-237-3377



\$303,301
 MLS 6819913 Residential
 221 US Highway 71
 Sebeka MN 56477



website: www.AffinityRealEstate.com | email: info@affinityrealestate.com | office: 218-237-3333 | fax: 218-237-3377



\$303,301
 MLS 6819913 Residential
 221 US Highway 71
 Sebeka MN 56477



website: www.AffinityRealEstate.com | email: info@affinityrealestate.com | office: 218-237-3333 | fax: 218-237-3377

Affinity
REAL ESTATE INC

\$303,301
MLS 6819913 Residential
221 US Highway 71
Sebeka MN 56477



website: www.AffinityRealEstate.com | email: info@affinityrealestate.com | office: 218-237-3333 | fax:218-237-3377



\$303,301
MLS 6819913 Residential
221 US Highway 71
Sebeka MN 56477