



MLS 6820132 Residential

\$204,000

1,008 sq ft
2 bedrooms
1 baths

200 Staff Street
Akeley MN 56433

Status: Active



Description:

Charming 2-bedroom, 1-bathroom home located on the edge of town. Features a heated and insulated attached single-car garage and a large lot with a partially fenced area. Beautifully upgraded tile flooring throughout and an open floor plan provide abundant natural light and generous space. This home is connected to city water and has a private septic system. Don't miss out on this one!

Additional Details:

Year Built	2004
Lot Acres	0.67
Lot Dimensions	145x200x145x200
Garage Stalls	1
School District	693
Taxes	\$1,855
Taxes with Assessments	\$2,076
Tax Year	2025

Additional Features:

Basement: None **Fuel:** Array **Garage:** 1 **Heat:** Forced Air, Humidifier **Sewer:** Mound Septic, Private Sewer **Water:** City Water/Connected **Air Conditioning:** Central Air

Driving Directions:

From Park Rapids proceed East on Highway 34 to Akeley, take a right on Staff Street to the property on left.



Listed By:
Wolff & Simon Real Estate

Affinity Real Estate Inc. participates in the Regional Multiple Listing Service of Minnesota, Inc Broker Reciprocity (sm) program, allowing us to display other broker's listings on our website. All properties are subject to prior sale, change or withdrawal.



Call Affinity Real Estate

218-237-3333

info@affinityrealestate.com



Affinity Real Estate - 600 Park Avenue South - Park Rapids MN 56470



website: www.AffinityRealEstate.com | email: info@affinityrealestate.com | office: 218-237-3333 | fax: 218-237-3377



\$204,000
 MLS 6820132 Residential
 200 Staff Street
 Akeley MN 56433



website: www.AffinityRealEstate.com | email: info@affinityrealestate.com | office: 218-237-3333 | fax: 218-237-3377

Affinity
REAL ESTATE INC

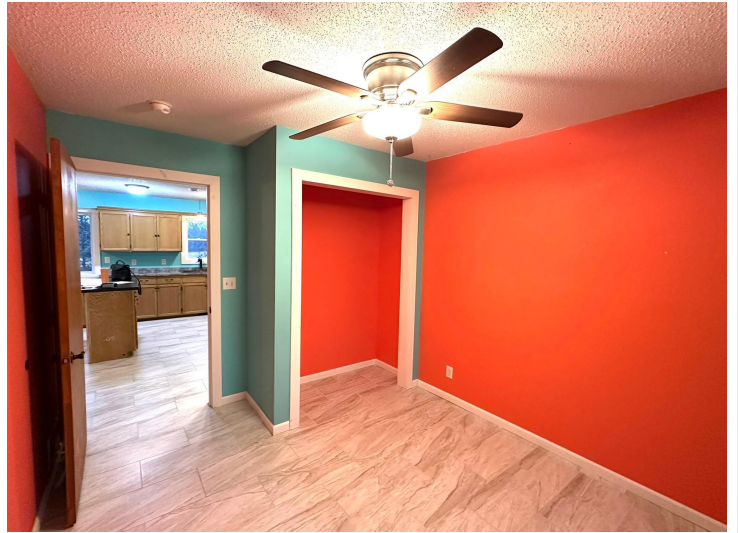
\$204,000
MLS 6820132 Residential
200 Staff Street
Akeley MN 56433



website: www.AffinityRealEstate.com | email: info@affinityrealestate.com | office: 218-237-3333 | fax: 218-237-3377

Affinity
REAL ESTATE INC

\$204,000
MLS 6820132 Residential
200 Staff Street
Akeley MN 56433



website: www.AffinityRealEstate.com | email: info@affinityrealestate.com | office: 218-237-3333 | fax: 218-237-3377



\$204,000
MLS 6820132 Residential
200 Staff Street
Akeley MN 56433



website: www.AffinityRealEstate.com | email: info@affinityrealestate.com | office: 218-237-3333 | fax: 218-237-3377



\$204,000
 MLS 6820132 Residential
 200 Staff Street
 Akeley MN 56433

