



MLS 6820168 Lake Land

\$285,000

Description:

Plat of "Eagle Nest" on Little Boy lake.

159.8 feet of sandy shoreline and .94 of an acre, with 4 to 8 feet of gentle elevation facing the westerly sunsets on Musky Bay ! Heavily wooded with Maples, Birch, Aspen and a Few large White Pines. Owners own 2 additional tracts to the south and will retain a temporary driveway easement for access until they construct a new driveway next spring, by no later than the end of June. Buried underground power from Crow Wing Coop and newer fiber optic from Arvig is on the road right-a-way. Not many parcels left on the chain, which includes Wabedo Lake, especially with lower elevation and decent frontage.

Additional Details:

Lot Acres	0.94
Lot Dimensions	159x252x228x228
School District	118
Taxes	\$1,124
Taxes with Assessments	\$1,124
Tax Year	2025

Additional Features:

Driving Directions:

From Longville east on County Road 7, right or south, on Sioux Camp Road, left on North Eagle Road NE to sign on the NE corner of the property.



Listed By:
Moran Realty

Affinity Real Estate Inc. participates in the Regional Multiple Listing Service of Minnesota, Inc Broker Reciprocity (sm) program, allowing us to display other broker's listings on our website. All properties are subject to prior sale, change or withdrawal.



Call Affinity Real Estate

218-237-3333

info@affinityrealestate.com



Affinity Real Estate - 600 Park Avenue South - Park Rapids MN 56470



website: www.AffinityRealEstate.com | email: info@affinityrealestate.com | office: 218-237-3333 | fax: 218-237-3377



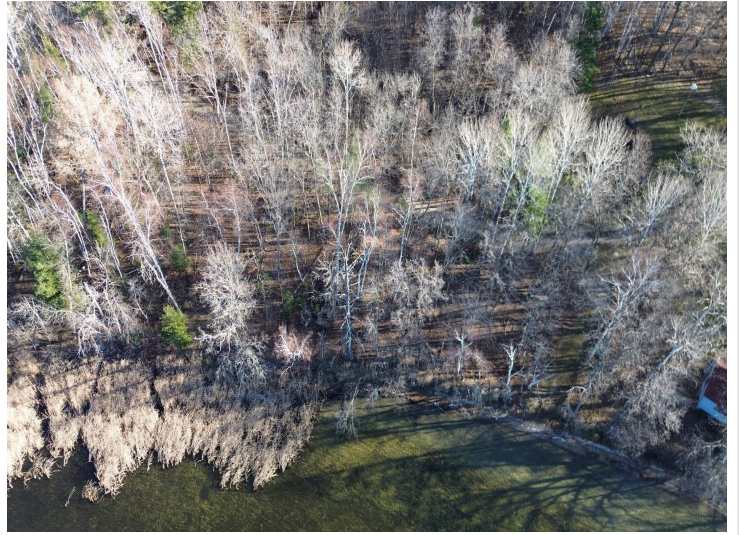
\$285,000
 MLS 6820168 Lake Land
 TBD N Eagle Road NE
 Longville MN 56655



website: www.AffinityRealEstate.com | email: info@affinityrealestate.com | office: 218-237-3333 | fax: 218-237-3377



\$285,000
 MLS 6820168 Lake Land
 TBD N Eagle Road NE
 Longville MN 56655



website: www.AffinityRealEstate.com | email: info@affinityrealestate.com | office: 218-237-3333 | fax: 218-237-3377



\$285,000

MLS 6820168 Lake Land
TBD N Eagle Road NE
Longville MN 56655



website: www.AffinityRealEstate.com | email: info@affinityrealestate.com | office: 218-237-3333 | fax: 218-237-3377



\$285,000

MLS 6820168 Lake Land
TBD N Eagle Road NE
Longville MN 56655