



MLS 6820424 Residential

**\$319,900**

2,696 sq ft  
3 bedrooms  
2 baths

3424 State 87  
Backus MN 56435

Status: Active

**Description:**

Country home on 2.3 acres close to Sanborn Lake public access. The home offers 3 bedrooms, 2 bathrooms-one of them has the laundry, kitchen with dining, large living room with gas fireplace, family room and bonus room with hot tub. Basement could be finished. Nice sized lot with back yard privacy. There is a fenced area for children or pets. The garage is 26' X 28' with a work area and a shed for storage. A possibility of making a separate living area if needed in the house. Good location...close to many lakes with a grocery & gas station close by and The Salty Dog restaurant. Not located on a gravel road!

**Additional Details:**

Year Built	1971
Lot Acres	2.3
Lot Dimensions	200x500x200x500
Garage Stalls	2
School District	2174
Taxes	\$862
Taxes with Assessments	\$928
Tax Year	2025

**Additional Features:**

**Basement:** Block **Fuel:** Propane **Garage:** 2 **Heat:** Boiler, Fireplace(s), Outdoor Boiler **Sewer:** Tank with Drainage Field **Water:** Well **Air Conditioning:** None

**Driving Directions:**

Just north of Backus on Hwy 371, turn and go east on Hwy 87 (at Godfrey's). Go a couple of miles to #3424 on north side of road.



Listed By:  
Cedar Point Realty

Affinity Real Estate Inc. participates in the Regional Multiple Listing Service of Minnesota, Inc Broker Reciprocity (sm) program, allowing us to display other broker's listings on our website. All properties are subject to prior sale, change or withdrawal.



**Call Affinity Real Estate**

**218-237-3333**

**info@affinityrealestate.com**



**Affinity Real Estate - 600 Park Avenue South - Park Rapids MN 56470**





website: [www.AffinityRealEstate.com](http://www.AffinityRealEstate.com) | email: [info@affinityrealestate.com](mailto:info@affinityrealestate.com) | office: 218-237-3333 | fax: 218-237-3377

**Affinity**  
REAL ESTATE INC

**\$319,900**  
MLS 6820424 Residential  
3424 State 87  
Backus MN 56435





website: [www.AffinityRealEstate.com](http://www.AffinityRealEstate.com) | email: [info@affinityrealestate.com](mailto:info@affinityrealestate.com) | office: 218-237-3333 | fax: 218-237-3377

**Affinity**  
REAL ESTATE INC

**\$319,900**  
MLS 6820424 Residential  
3424 State 87  
Backus MN 56435





website: [www.AffinityRealEstate.com](http://www.AffinityRealEstate.com) | email: [info@affinityrealestate.com](mailto:info@affinityrealestate.com) | office: 218-237-3333 | fax: 218-237-3377

**Affinity**  
REAL ESTATE INC

**\$319,900**  
MLS 6820424 Residential  
3424 State 87  
Backus MN 56435



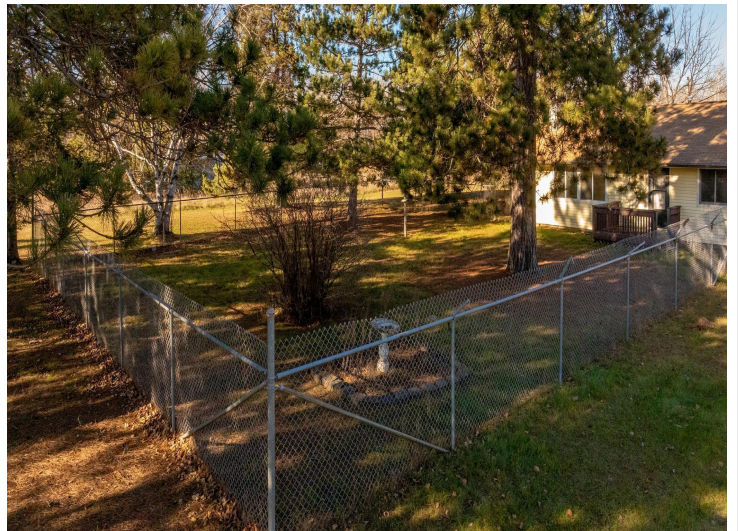


website: [www.AffinityRealEstate.com](http://www.AffinityRealEstate.com) | email: [info@affinityrealestate.com](mailto:info@affinityrealestate.com) | office: 218-237-3333 | fax: 218-237-3377

**Affinity**  
REAL ESTATE INC

**\$319,900**  
MLS 6820424 Residential  
3424 State 87  
Backus MN 56435





website: [www.AffinityRealEstate.com](http://www.AffinityRealEstate.com) | email: [info@affinityrealestate.com](mailto:info@affinityrealestate.com) | office: 218-237-3333 | fax: 218-237-3377



**\$319,900**  
 MLS 6820424 Residential  
 3424 State 87  
 Backus MN 56435





website: [www.AffinityRealEstate.com](http://www.AffinityRealEstate.com) | email: [info@affinityrealestate.com](mailto:info@affinityrealestate.com) | office: 218-237-3333 | fax: 218-237-3377

**Affinity**  
REAL ESTATE INC

**\$319,900**  
MLS 6820424 Residential  
3424 State 87  
Backus MN 56435





website: [www.AffinityRealEstate.com](http://www.AffinityRealEstate.com) | email: [info@affinityrealestate.com](mailto:info@affinityrealestate.com) | office: 218-237-3333 | fax: 218-237-3377



**\$319,900**  
MLS 6820424 Residential  
3424 State 87  
Backus MN 56435