



MLS 6820592 Lake Home

\$975,000

2,898 sq ft
4 bedrooms
3 baths

1219 Harbor Place
Brainerd MN 56401

Waterfront: Gull

Status: Active

Description:

Welcome to 1219 Harbor Place in the highly sought after Harbor at East Gull Lake community. This custom built 2019 Baratto Brothers Anchor XL plan offers approximately 2,898 sq ft above grade with 4 bedrooms and 3 baths. Designed for luxury and ease of living, this home features main floor living, an open concept great room with beamed ceilings, fine cabinetry, premium finishes, a gas fireplace and a stamped concrete patio for outdoor enjoyment. The upper level includes additional guest bedrooms and a spacious bunk room.

Every home in The Harbor includes a 30 foot harbor slip with permanent dock access to Gull Lake, a 20x40 private storage garage for boats and lake gear, a heated outdoor pool, a putting green, and more than twenty six acres of beautifully maintained grounds. Lawn care, irrigation and yard maintenance are handled by the HOA along with all winter snow removal. The home's yard is lush and green with no water bill thanks to the HOA maintained well system.

Residents enjoy quick access to the near new paved trail system, Legacy Golf courses, The Gravel Pit course, and the entire Gull Lake Chain. Walk, drive or boat to nearby Ernie's on Gull for lakeside dining on Squaw Point. East Gull Lake is known for its high end resorts, family friendly recreation, miles of shoreline and year round outdoor activities, including hiking, snowmobiling and exploring the Pillsbury State Forest.

This property combines high quality construction, beautiful architecture, a private setting and a lifestyle focused on ease and enjoyment. Schedule your tour today and experience maintenance free lake living on one of Minnesota's most desirable lakes.

Additional Details:

Year Built	2019
Lot Acres	0.21
Lot Dimensions	80x163x75x154
Garage Stalls	6
School District	181
Taxes	\$6,118
Taxes with Assessments	\$6,184

1 Listed By: 2025
eXp Realty

Additional Features:
Affinity Real Estate Inc. participates in the Regional Multiple Listing Service of Minnesota, Inc Broker Reciprocity (sm) program, allowing us to display other broker's listings on our website. All properties are subject to prior sale, change or withdrawal.
Driving Directions:

From State Hwy 371 Turn West Onto Gull Lake Dam Road. Follow To The Traffic Circle And Take The First Exit. Turn left Onto Squaw Point Road. Turn Left onto Harbor Place and Property Will Be The Third House On Left.



Call Affinity Real Estate
218-237-3333
info@affinityrealestate.com



Affinity Real Estate - 600 Park Avenue South, Park Rapids MN 56470



website: www.AffinityRealEstate.com | email: info@affinityrealestate.com | office: 218-237-3333 | fax: 218-237-3377

Affinity
REAL ESTATE INC

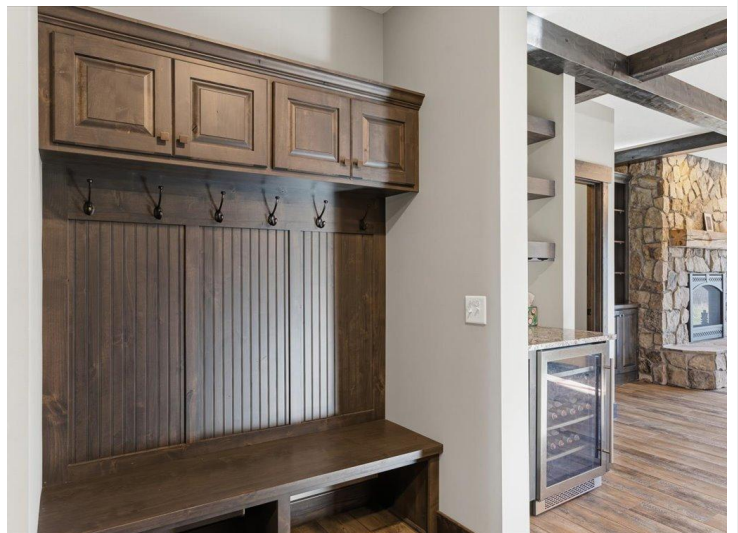
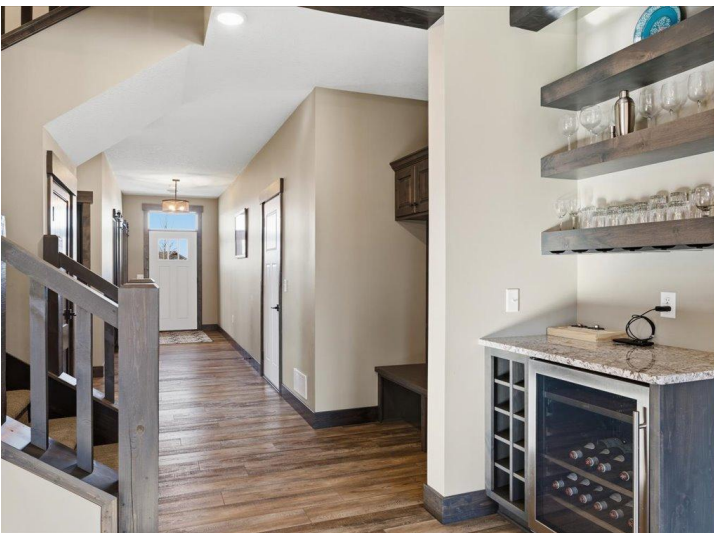
\$975,000
MLS 6820592 Lake Home
1219 Harbor Place
Brainerd MN 56401



website: www.AffinityRealEstate.com | email: info@affinityrealestate.com | office: 218-237-3333 | fax: 218-237-3377

Affinity
REAL ESTATE INC

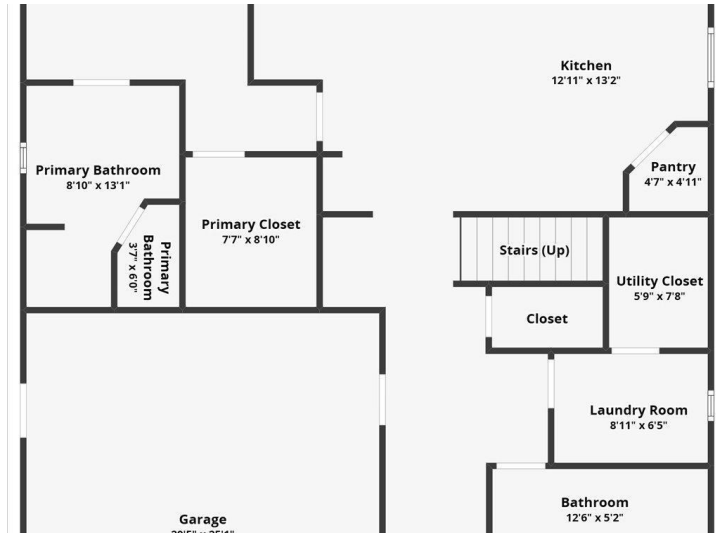
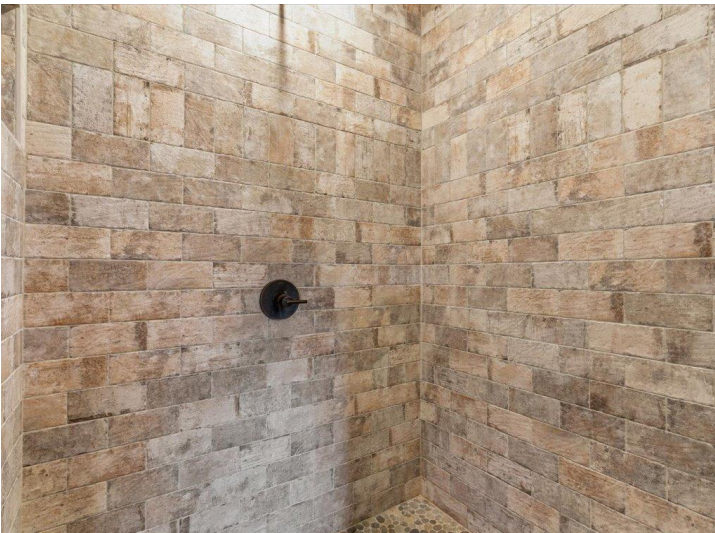
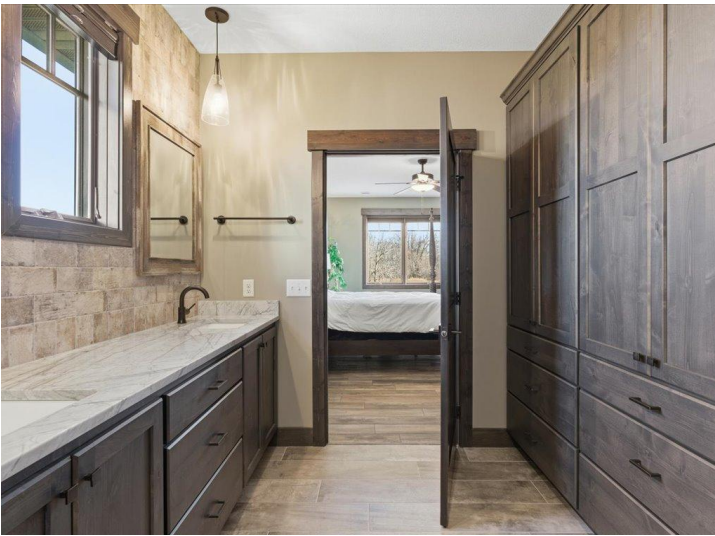
\$975,000
MLS 6820592 Lake Home
1219 Harbor Place
Brainerd MN 56401



website: www.AffinityRealEstate.com | email: info@affinityrealestate.com | office: 218-237-3333 | fax: 218-237-3377



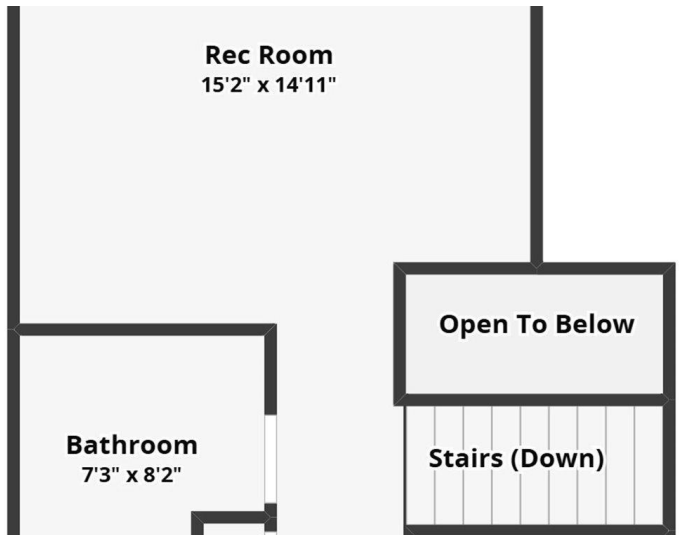
\$975,000
MLS 6820592 Lake Home
1219 Harbor Place
Brainerd MN 56401



website: www.AffinityRealEstate.com | email: info@affinityrealestate.com | office: 218-237-3333 | fax: 218-237-3377



\$975,000
 MLS 6820592 Lake Home
 1219 Harbor Place
 Brainerd MN 56401



website: www.AffinityRealEstate.com | email: info@affinityrealestate.com | office: 218-237-3333 | fax:218-237-3377



\$975,000

MLS 6820592 Lake Home
1219 Harbor Place
Brainerd MN 56401