



MLS 6821052 Land

\$80,000

2.4 Acres
Plat Designed

TBD Lot 2 Dunton Locks Lane
Detroit Lakes MN 56501

Status: Active

Description:

2.4 acre Buildable lot located just moments from the Dunton Locks walking and biking trail. Enjoy living where you gain easy access to one of the area's most loved outdoor attractions.

Additional Details:

Lot Acres	2.4
Lot Dimensions	irr
School District	22
Taxes	\$310
Taxes with Assessments	\$310
Tax Year	2025

Additional Features:

Driving Directions:

From Detroit Lakes head S on 59 Turn onto Dunton Locks Rd to Dunton Locks Lane to sign



Listed By:
Counselor Realty Detroit Lakes

Affinity Real Estate Inc. participates in the Regional Multiple Listing Service of Minnesota, Inc Broker Reciprocity (sm) program, allowing us to display other broker's listings on our website. All properties are subject to prior sale, change or withdrawal.



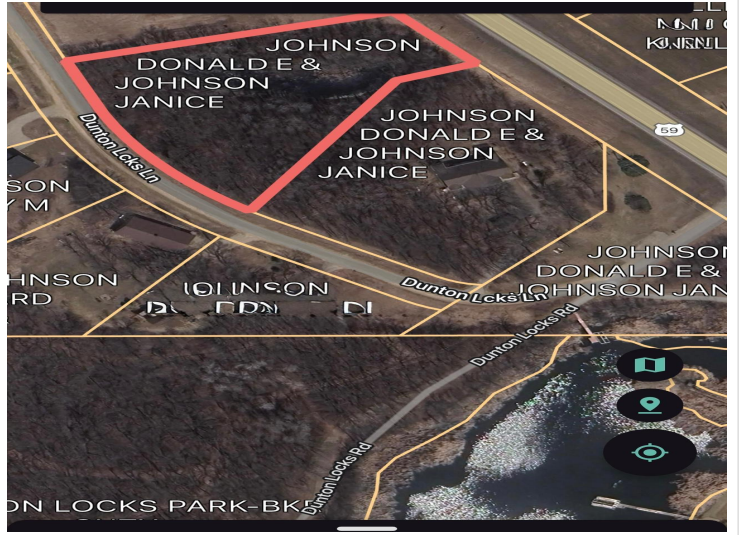
Call Affinity Real Estate

218-237-3333

info@affinityrealestate.com



Affinity Real Estate - 600 Park Avenue South - Park Rapids MN 56470



website: www.AffinityRealEstate.com | email: info@affinityrealestate.com | office: 218-237-3333 | fax: 218-237-3377



\$80,000
MLS 6821052 Land
TBD Lot 2 Dunton Locks
Lane
Detroit Lakes MN 56501