



MLS 6821759 Commercial

**\$2,400**

411 Front Street  
Brainerd MN 56401

Status: Active

**Description:**

Enjoy move-in-ready office space right on Front Street in Downtown Brainerd. This nicely finished suite offers an affordable rate in a highly convenient location—perfect for relocating or expanding your office-service business. Benefit from excellent visibility, easy access, and strong vehicle and pedestrian traffic in the heart of Brainerd's downtown corridor.

**Additional Details:**

Year Built	1946
Lot Acres	0.42
Lot Dimensions	Entire Parcel Includes Adjoining Bldg to E
School District	181
Taxes	\$9,092
Taxes with Assessments	\$9,092
Tax Year	2025

**Additional Features:**

**Fuel:** Natural Gas **Heat:** Forced Air

**Driving Directions:**

From Hwy 210 (Washington Street) / Hwy 371 (S 6th Street) intersection in Brainerd - South on S 6th Street 1 block - West on Front Street - Property is on the North, just after S 5th St



Listed By:  
Close-Converse Commercial Prop

Affinity Real Estate Inc. participates in the Regional Multiple Listing Service of Minnesota, Inc Broker Reciprocity (sm) program, allowing us to display other broker's listings on our website. All properties are subject to prior sale, change or withdrawal.



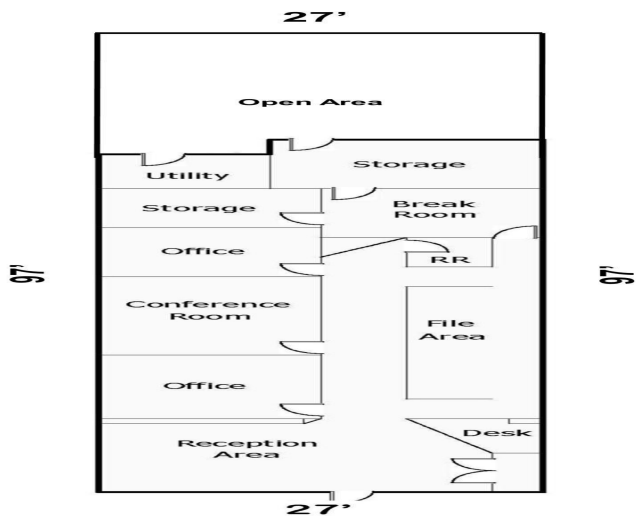
**Call Affinity Real Estate**

**218-237-3333**

**info@affinityrealestate.com**



**Affinity Real Estate - 600 Park Avenue South - Park Rapids MN 56470**

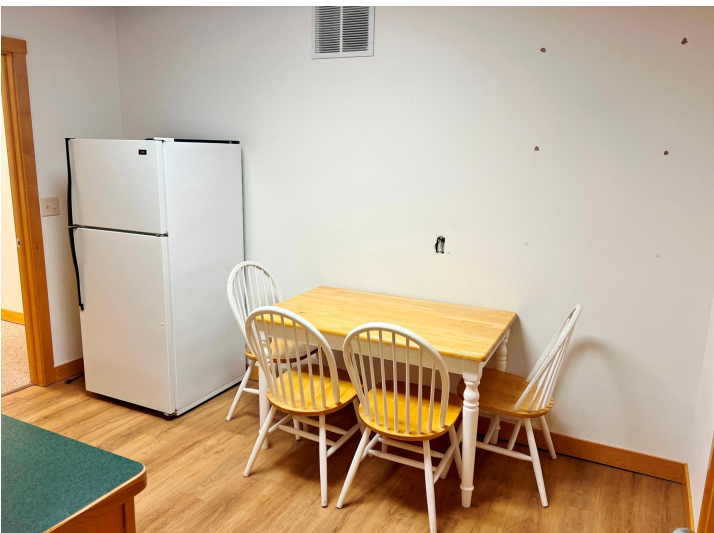


website: [www.AffinityRealEstate.com](http://www.AffinityRealEstate.com) | email: [info@affinityrealestate.com](mailto:info@affinityrealestate.com) | office: 218-237-3333 | fax: 218-237-3377



**\$2,400**  
 MLS 6821759 Commercial  
 411 Front Street  
 Brainerd MN 56401





website: [www.AffinityRealEstate.com](http://www.AffinityRealEstate.com) | email: [info@affinityrealestate.com](mailto:info@affinityrealestate.com) | office: 218-237-3333 | fax: 218-237-3377



**\$2,400**  
MLS 6821759 Commercial  
411 Front Street  
Brainerd MN 56401





website: [www.AffinityRealEstate.com](http://www.AffinityRealEstate.com) | email: [info@affinityrealestate.com](mailto:info@affinityrealestate.com) | office: 218-237-3333 | fax: 218-237-3377



**\$2,400**  
MLS 6821759 Commercial  
411 Front Street  
Brainerd MN 56401