



MLS 6822130 Residential

**\$609,400**

2,900 sq ft  
3 bedrooms  
3 baths

239 County 49  
Pine River MN 56474

Status: Active

#### Description:

Welcome to this beautiful 3-bedroom, 3-bath home set on 40 secluded acres of pure country paradise. Tucked away at the end of a private drive, this property offers unmatched privacy, natural beauty and room to live the lifestyle you've always dreamed of. Step inside and you'll find a warm, inviting home with spacious living areas, abundant natural light, and stunning views from every window. A functional kitchen with newer appliances and a large pantry. The cozy wood-burning fireplace serves as the centerpiece of the main living area, creating the perfect place to relax after a day outdoors. The well-designed layout includes main level laundry, a comfortable primary suite, two other bedrooms and multiple living spaces ideal for gatherings or quiet evenings at home. Outdoors is where this property truly shines. The land is a wildlife lover's dream, featuring deer, bear, and turkey roaming freely, along with established trails, deer plots, and a peaceful pond that attracts game year-round. Explore your acreage by foot, ATV, or horseback, every corner offers something new. The acreage is bordered by thousands of acres of public land, giving you incredible access to additional space for hunting, hiking, and exploring. A large shop provides ample space for equipment, hobbies, storage, or a workspace, making this property as functional as it is beautiful. To top it off, the property is just minutes from numerous beautiful lakes, offering endless opportunities for fishing, boating, and outdoor recreation all within only a few miles. Whether you're looking for a private homestead, a hunting retreat, or a place to simply enjoy nature, this property offers the perfect blend of comfort, adventure, and complete privacy. Your dream property awaits come experience the peace and beauty of country living at its finest.

#### Additional Details:

Year Built	2010
Lot Acres	40.15
Lot Dimensions	40.15 acres
Garage Stalls	2
School District	1065
Taxes	\$2,532
Taxes with Assessments	\$2,598
Tax Year	2025

#### Additional Features:

**Garage:** 2 **Heat:** Baseboard, Boiler, In-Floor Heating, Radiant **Septic System Compliant:** Yes **Water:** Well **Air**  
Listed By: **Broker Reciprocity** **Exp Realty**

**Driving Directions:** Affinity Real Estate Inc. participates in the Regional Multiple Listing Service of Minnesota, Inc. Broker Reciprocity (sm) program, allowing us to display other broker's listings on our website. All properties are subject to prior sale, change or withdrawal.



Call Affinity Real Estate

**218-237-3333**

**info@affinityrealestate.com**



**Affinity Real Estate - 600 Park Avenue South - Park Rapids MN 56470**





website: [www.AffinityRealEstate.com](http://www.AffinityRealEstate.com) | email: [info@affinityrealestate.com](mailto:info@affinityrealestate.com) | office: 218-237-3333 | fax: 218-237-3377



**\$609,400**  
 MLS 6822130 Residential  
 239 County 49  
 Pine River MN 56474





website: [www.AffinityRealEstate.com](http://www.AffinityRealEstate.com) | email: [info@affinityrealestate.com](mailto:info@affinityrealestate.com) | office: 218-237-3333 | fax: 218-237-3377



**\$609,400**  
 MLS 6822130 Residential  
 239 County 49  
 Pine River MN 56474





website: [www.AffinityRealEstate.com](http://www.AffinityRealEstate.com) | email: [info@affinityrealestate.com](mailto:info@affinityrealestate.com) | office: 218-237-3333 | fax: 218-237-3377



**\$609,400**  
 MLS 6822130 Residential  
 239 County 49  
 Pine River MN 56474





website: [www.AffinityRealEstate.com](http://www.AffinityRealEstate.com) | email: [info@affinityrealestate.com](mailto:info@affinityrealestate.com) | office: 218-237-3333 | fax: 218-237-3377



**\$609,400**  
 MLS 6822130 Residential  
 239 County 49  
 Pine River MN 56474





website: [www.AffinityRealEstate.com](http://www.AffinityRealEstate.com) | email: [info@affinityrealestate.com](mailto:info@affinityrealestate.com) | office: 218-237-3333 | fax: 218-237-3377

**Affinity**  
REAL ESTATE INC

**\$609,400**  
MLS 6822130 Residential  
239 County 49  
Pine River MN 56474





website: [www.AffinityRealEstate.com](http://www.AffinityRealEstate.com) | email: [info@affinityrealestate.com](mailto:info@affinityrealestate.com) | office: 218-237-3333 | fax: 218-237-3377

**Affinity**  
REAL ESTATE INC

**\$609,400**  
MLS 6822130 Residential  
239 County 49  
Pine River MN 56474



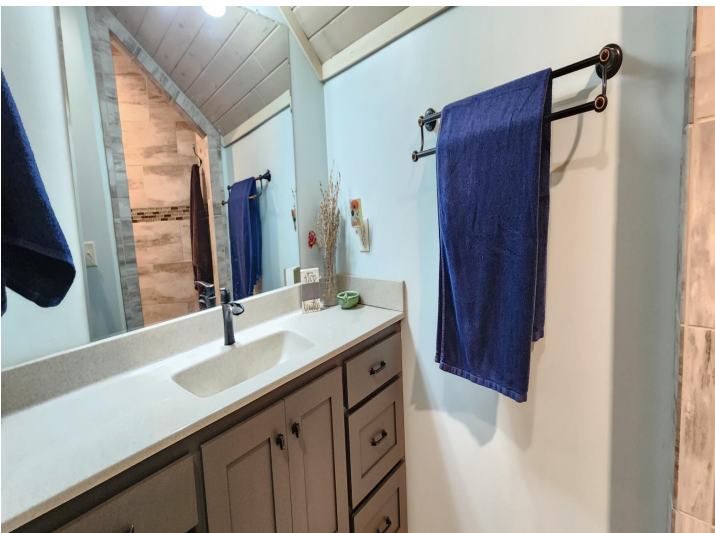
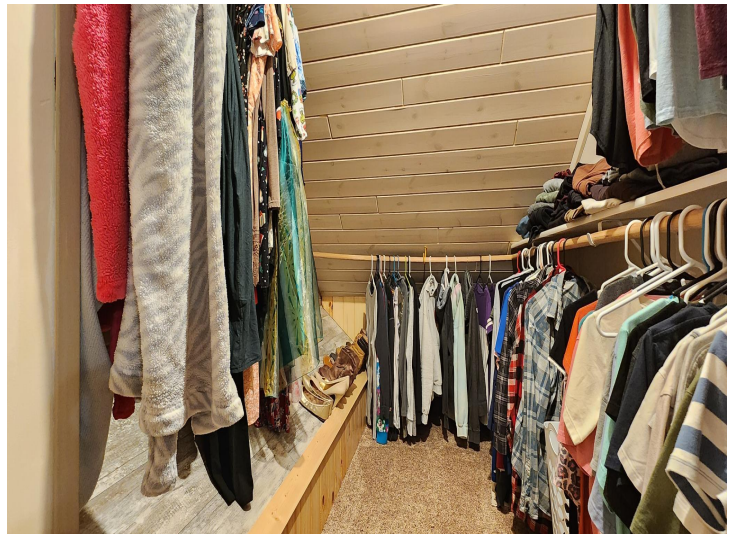


website: [www.AffinityRealEstate.com](http://www.AffinityRealEstate.com) | email: [info@affinityrealestate.com](mailto:info@affinityrealestate.com) | office: 218-237-3333 | fax: 218-237-3377

**Affinity**  
REAL ESTATE INC

**\$609,400**  
MLS 6822130 Residential  
239 County 49  
Pine River MN 56474



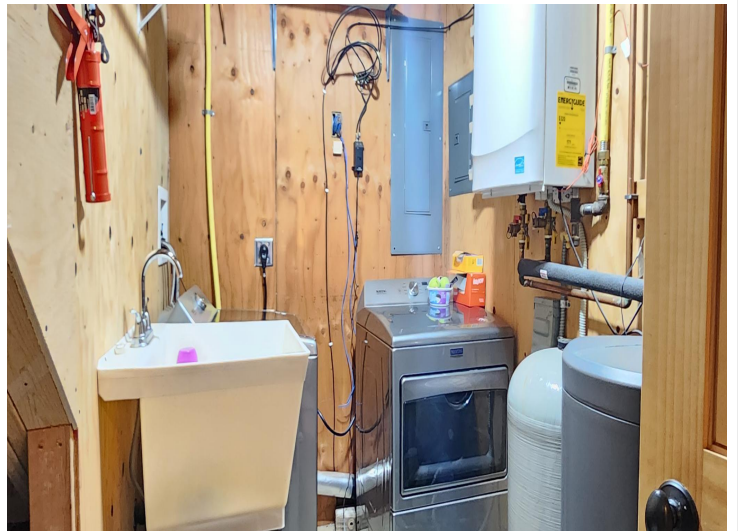


website: [www.AffinityRealEstate.com](http://www.AffinityRealEstate.com) | email: [info@affinityrealestate.com](mailto:info@affinityrealestate.com) | office: 218-237-3333 | fax: 218-237-3377

**Affinity**  
REAL ESTATE INC

**\$609,400**  
MLS 6822130 Residential  
239 County 49  
Pine River MN 56474





website: [www.AffinityRealEstate.com](http://www.AffinityRealEstate.com) | email: [info@affinityrealestate.com](mailto:info@affinityrealestate.com) | office: 218-237-3333 | fax: 218-237-3377

**Affinity**  
REAL ESTATE INC

**\$609,400**  
MLS 6822130 Residential  
239 County 49  
Pine River MN 56474



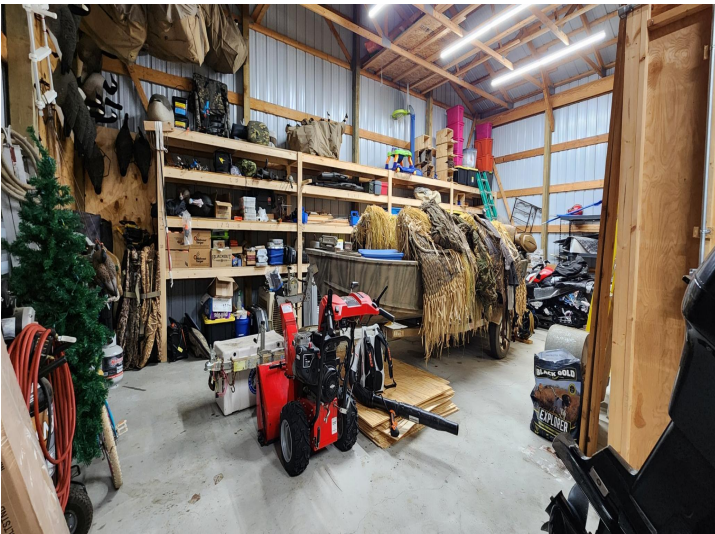
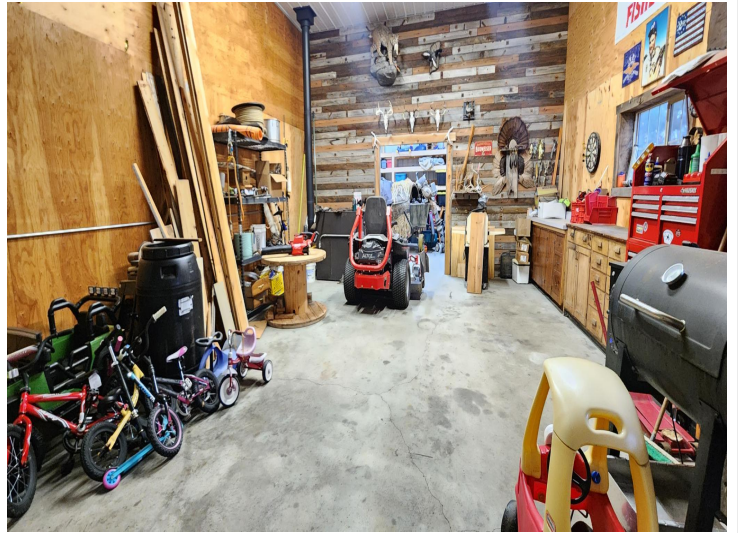


website: [www.AffinityRealEstate.com](http://www.AffinityRealEstate.com) | email: [info@affinityrealestate.com](mailto:info@affinityrealestate.com) | office: 218-237-3333 | fax: 218-237-3377

**Affinity**  
REAL ESTATE INC

**\$609,400**  
MLS 6822130 Residential  
239 County 49  
Pine River MN 56474



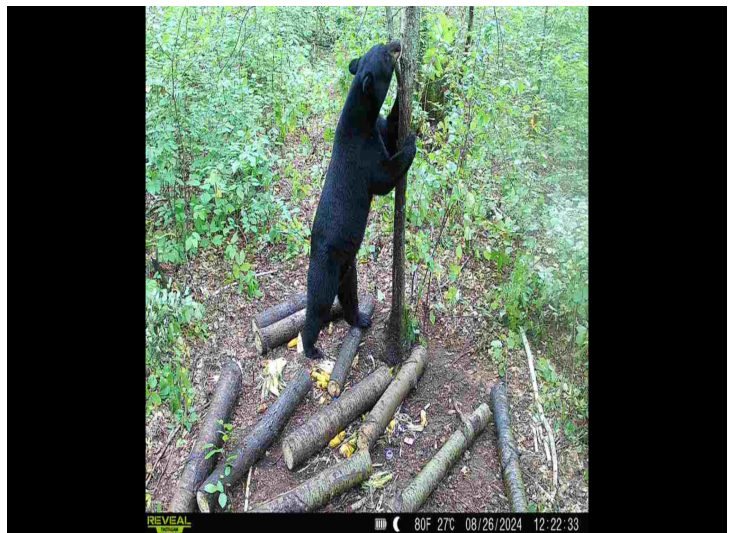


website: [www.AffinityRealEstate.com](http://www.AffinityRealEstate.com) | email: [info@affinityrealestate.com](mailto:info@affinityrealestate.com) | office: 218-237-3333 | fax: 218-237-3377

**Affinity**  
REAL ESTATE INC

**\$609,400**  
MLS 6822130 Residential  
239 County 49  
Pine River MN 56474



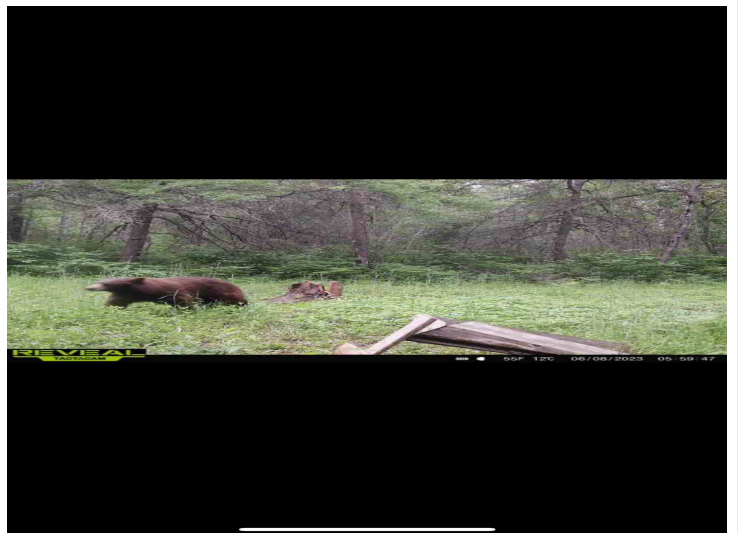


website: [www.AffinityRealEstate.com](http://www.AffinityRealEstate.com) | email: [info@affinityrealestate.com](mailto:info@affinityrealestate.com) | office: 218-237-3333 | fax: 218-237-3377



**\$609,400**  
MLS 6822130 Residential  
239 County 49  
Pine River MN 56474



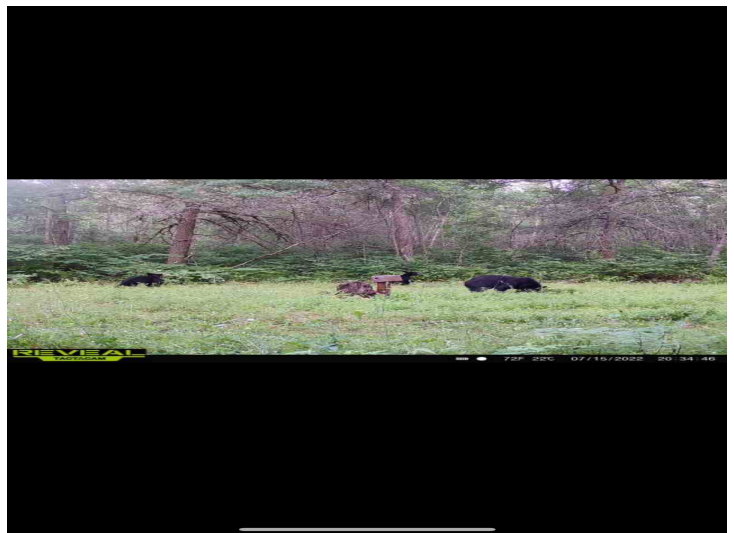
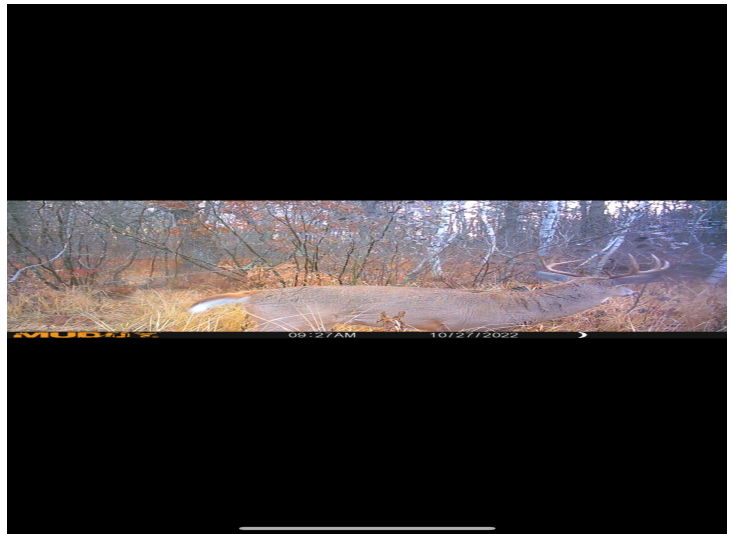


website: [www.AffinityRealEstate.com](http://www.AffinityRealEstate.com) | email: [info@affinityrealestate.com](mailto:info@affinityrealestate.com) | office: 218-237-3333 | fax: 218-237-3377



**\$609,400**  
 MLS 6822130 Residential  
 239 County 49  
 Pine River MN 56474



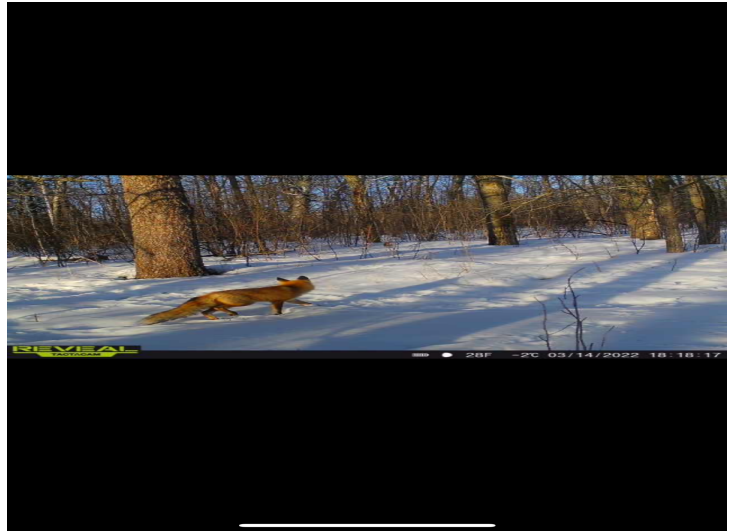


website: [www.AffinityRealEstate.com](http://www.AffinityRealEstate.com) | email: [info@affinityrealestate.com](mailto:info@affinityrealestate.com) | office: 218-237-3333 | fax: 218-237-3377



**\$609,400**  
 MLS 6822130 Residential  
 239 County 49  
 Pine River MN 56474



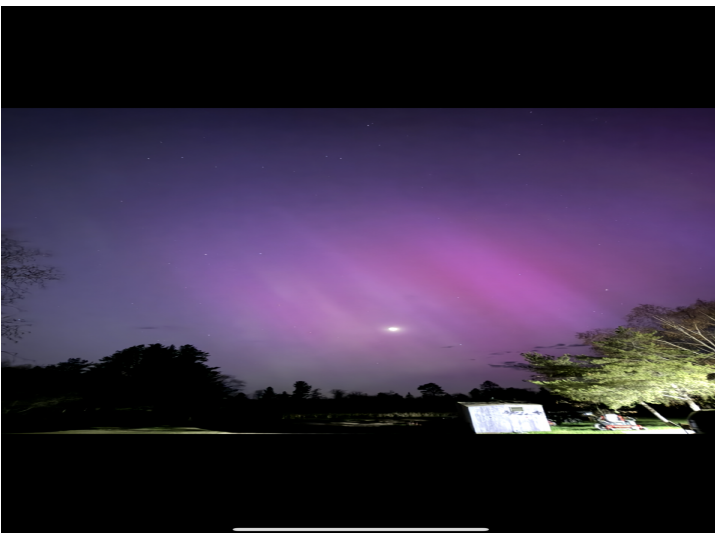
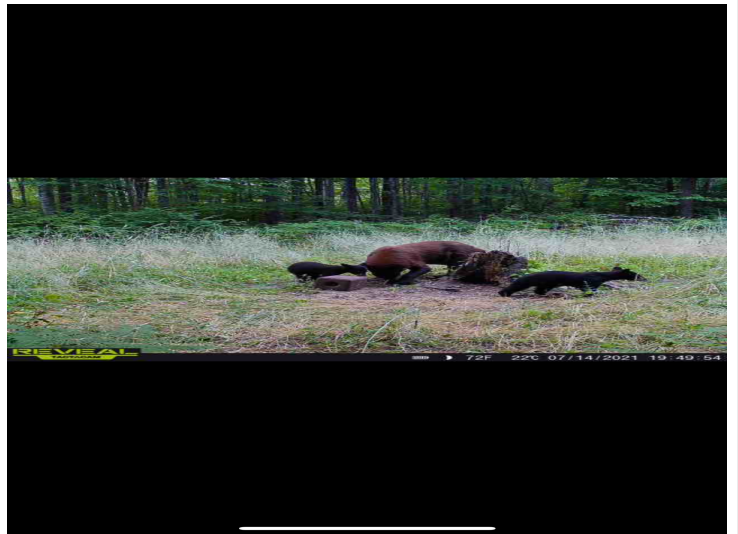
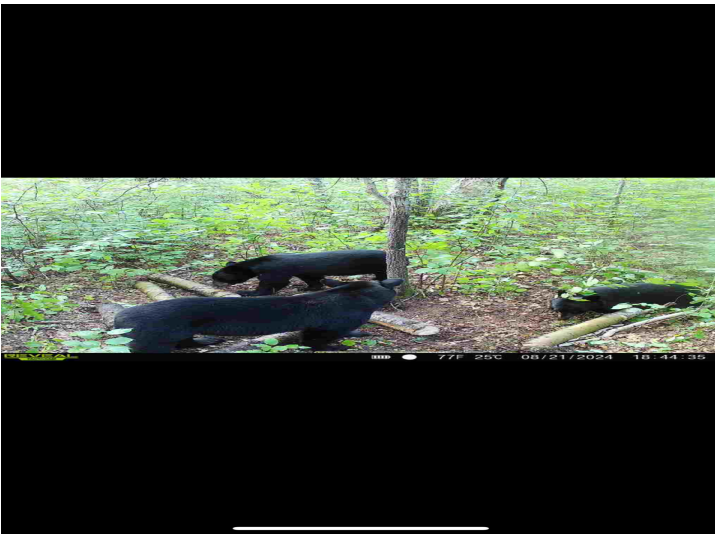


website: [www.AffinityRealEstate.com](http://www.AffinityRealEstate.com) | email: [info@affinityrealestate.com](mailto:info@affinityrealestate.com) | office: 218-237-3333 | fax: 218-237-3377

**Affinity**  
REAL ESTATE INC

**\$609,400**  
MLS 6822130 Residential  
239 County 49  
Pine River MN 56474





website: [www.AffinityRealEstate.com](http://www.AffinityRealEstate.com) | email: [info@affinityrealestate.com](mailto:info@affinityrealestate.com) | office: 218-237-3333 | fax: 218-237-3377



**\$609,400**  
 MLS 6822130 Residential  
 239 County 49  
 Pine River MN 56474





website: [www.AffinityRealEstate.com](http://www.AffinityRealEstate.com) | email: [info@affinityrealestate.com](mailto:info@affinityrealestate.com) | office: 218-237-3333 | fax: 218-237-3377



**\$609,400**  
MLS 6822130 Residential  
239 County 49  
Pine River MN 56474





website: [www.AffinityRealEstate.com](http://www.AffinityRealEstate.com) | email: [info@affinityrealestate.com](mailto:info@affinityrealestate.com) | office: 218-237-3333 | fax: 218-237-3377



**\$609,400**  
MLS 6822130 Residential  
239 County 49  
Pine River MN 56474