



MLS 6822429 Residential

**\$325,000**

1,472 sq ft  
2 bedrooms  
1 baths

2170 County Road 5  
Hackensack MN 56452

Status: Active

**Description:**

If you've been searching for that perfect Up North getaway without the hefty Up North price tag, this is it. Located at 2170 County Road 5 NW in Hackensack, this \$325,000 lakefront property offers 2 bedrooms, 1 bathroom, a 2-car garage, and 10.42 beautiful acres on Lost Lake. You're just minutes from Longville, where you can grab a bite to eat, stop by the ice cream shop, and enjoy the famous summer Turtle Races. Plus, you're surrounded by some of the area's best lakes, including the Woman Lake Chain, Leech Lake, and Ten Mile Lake—so bring the boat, the fishing rods, and your lake map. The home features a cozy wood-burning fireplace for crisp fall nights, a gradual slope down to the water, low taxes, and plenty of space to spread out. This is the kind of property where families make memories for generations. If you'd like more details or want to schedule a showing, reach out—lake life doesn't wait.

**Additional Details:**

Year Built	1957
Lot Acres	10.42
Lot Dimensions	1044x250x250x405x811x252x250
Garage Stalls	2
School District	693
Taxes	\$836
Taxes with Assessments	\$836
Tax Year	2025

**Additional Features:**

**Basement:** Other **Fuel:** Array **Garage:** 2 **Heat:** Forced Air, Fireplace(s) **Sewer:** Tank with Drainage Field **Water:** Sand Point **Air Conditioning:** None

**Driving Directions:**

From Longville - Head West on Co Rd 5 NW for 12 miles. Turn right onto subject property.



Listed By:  
Coldwell Banker Realty

Affinity Real Estate Inc. participates in the Regional Multiple Listing Service of Minnesota, Inc Broker Reciprocity (sm) program, allowing us to display other broker's listings on our website. All properties are subject to prior sale, change or withdrawal.



**Call Affinity Real Estate**

**218-237-3333**

**info@affinityrealestate.com**



**Affinity Real Estate - 600 Park Avenue South - Park Rapids MN 56470**



website: [www.AffinityRealEstate.com](http://www.AffinityRealEstate.com) | email: [info@affinityrealestate.com](mailto:info@affinityrealestate.com) | office: 218-237-3333 | fax: 218-237-3377

**Affinity**  
REAL ESTATE INC

**\$325,000**  
MLS 6822429 Residential  
2170 County Road 5  
Hackensack MN 56452



website: [www.AffinityRealEstate.com](http://www.AffinityRealEstate.com) | email: [info@affinityrealestate.com](mailto:info@affinityrealestate.com) | office: 218-237-3333 | fax:218-237-3377

**Affinity**  
REAL ESTATE INC

**\$325,000**  
MLS 6822429 Residential  
2170 County Road 5  
Hackensack MN 56452



website: [www.AffinityRealEstate.com](http://www.AffinityRealEstate.com) | email: [info@affinityrealestate.com](mailto:info@affinityrealestate.com) | office: 218-237-3333 | fax: 218-237-3377

**Affinity**  
REAL ESTATE INC

**\$325,000**  
MLS 6822429 Residential  
2170 County Road 5  
Hackensack MN 56452



website: [www.AffinityRealEstate.com](http://www.AffinityRealEstate.com) | email: [info@affinityrealestate.com](mailto:info@affinityrealestate.com) | office: 218-237-3333 | fax:218-237-3377



**\$325,000**  
MLS 6822429 Residential  
2170 County Road 5  
Hackensack MN 56452



website: [www.AffinityRealEstate.com](http://www.AffinityRealEstate.com) | email: [info@affinityrealestate.com](mailto:info@affinityrealestate.com) | office: 218-237-3333 | fax:218-237-3377

**Affinity**  
REAL ESTATE INC

**\$325,000**  
MLS 6822429 Residential  
2170 County Road 5  
Hackensack MN 56452



website: [www.AffinityRealEstate.com](http://www.AffinityRealEstate.com) | email: [info@affinityrealestate.com](mailto:info@affinityrealestate.com) | office: 218-237-3333 | fax:218-237-3377



**\$325,000**  
MLS 6822429 Residential  
2170 County Road 5  
Hackensack MN 56452



website: [www.AffinityRealEstate.com](http://www.AffinityRealEstate.com) | email: [info@affinityrealestate.com](mailto:info@affinityrealestate.com) | office: 218-237-3333 | fax:218-237-3377

**Affinity**  
REAL ESTATE INC

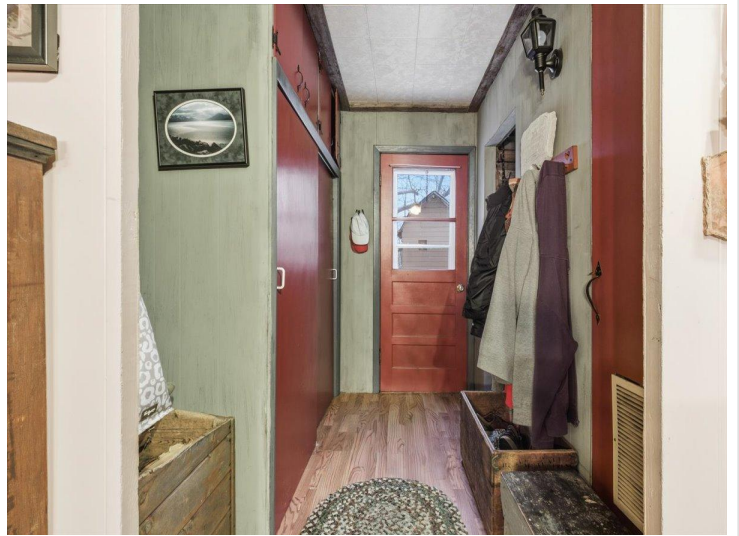
**\$325,000**  
MLS 6822429 Residential  
2170 County Road 5  
Hackensack MN 56452



website: [www.AffinityRealEstate.com](http://www.AffinityRealEstate.com) | email: [info@affinityrealestate.com](mailto:info@affinityrealestate.com) | office: 218-237-3333 | fax: 218-237-3377

**Affinity**  
REAL ESTATE INC

**\$325,000**  
MLS 6822429 Residential  
2170 County Road 5  
Hackensack MN 56452



## Exterior

website: [www.AffinityRealEstate.com](http://www.AffinityRealEstate.com) | email: [info@affinityrealestate.com](mailto:info@affinityrealestate.com) | office: 218-237-3333 | fax:218-237-3377

**Affinity**  
REAL ESTATE INC

**\$325,000**  
MLS 6822429 Residential  
2170 County Road 5  
Hackensack MN 56452



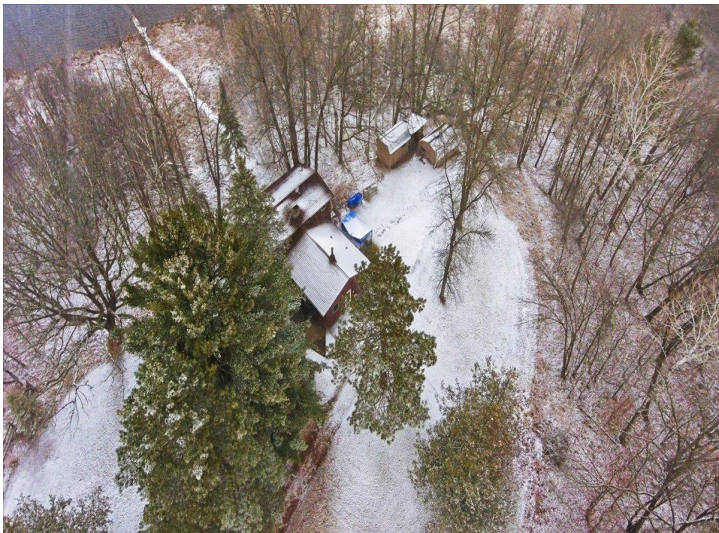
website: [www.AffinityRealEstate.com](http://www.AffinityRealEstate.com) | email: [info@affinityrealestate.com](mailto:info@affinityrealestate.com) | office: 218-237-3333 | fax:218-237-3377



**\$325,000**  
MLS 6822429 Residential  
2170 County Road 5  
Hackensack MN 56452



Drone



website: [www.AffinityRealEstate.com](http://www.AffinityRealEstate.com) | email: [info@affinityrealestate.com](mailto:info@affinityrealestate.com) | office: 218-237-3333 | fax:218-237-3377



**\$325,000**  
MLS 6822429 Residential  
2170 County Road 5  
Hackensack MN 56452