



MLS 6822452 Residential

\$425,000

1,800 sq ft
3 bedrooms
4 baths

657 Frohn Road
Bemidji MN 56601

Status: Active

Description:

One-level living on nearly 10 acres just minutes from Bemidji! This 2015 built slab on grade is an open floor plan with in-floor heat, central air, custom cabinetry, custom farmhouse lighting over the kitchen bar, tile floors, a large kitchen island, and a cozy electric fireplace. Enjoy 3 bedrooms and 3 bathrooms, including a primary suite with a $\frac{3}{4}$ ensuite, walk in shower, and walk-in closet, plus a bonus flex space perfect for a kids' play area or home office. A custom full bath for others rests between bedrooms. A low-maintenance home includes vinyl windows and LP SmartSide siding. Outside, you'll love the covered front porch, back patio, fenced backyard, hot tub, and a full chicken setup with coop and run. The attached heated garage is a huge perk (including a $\frac{1}{2}$ bath) —the star is the heated 30x30 detached garage with 220 power and its own $\frac{3}{4}$ bathroom. Perfect for a workshop, hobby space, home business, or extra storage. Level lot. Paved driveway. Privacy and convenience in one package.

Additional Details:

Year Built	2015
Lot Acres	9.31
Lot Dimensions	1225x325
Garage Stalls	3
School District	31
Taxes	\$1,106
Taxes with Assessments	\$1,106
Tax Year	2025

Additional Features:

Basement: None **Fuel:** Electric, Propane **Garage:** 3 **Heat:** Boiler, Dual, Forced Air, Fireplace(s), Hot Water, Radiant Floor **Sewer:** Private Sewer, Tank with Drainage Field **Water:** Submersible - 4 Inch, Drilled, Private, Well **Air Conditioning:** Central Air

Driving Directions:

From Paul and Babe take 197 (Bemidji Ave) to Roosevelt head east 5 miles. Left on Frohn 1/4 mile home is on left.



Listed By:
218 Real Estate

Affinity Real Estate Inc. participates in the Regional Multiple Listing Service of Minnesota, Inc Broker Reciprocity (sm) program, allowing us to display other broker's listings on our website. All properties are subject to prior sale, change or withdrawal.



Call Affinity Real Estate

218-237-3333

info@affinityrealestate.com



Affinity Real Estate - 600 Park Avenue South - Park Rapids MN 56470



website: www.AffinityRealEstate.com | email: info@affinityrealestate.com | office: 218-237-3333 | fax: 218-237-3377



\$425,000
 MLS 6822452 Residential
 657 Frohn Road
 Bemidji MN 56601



website: www.AffinityRealEstate.com | email: info@affinityrealestate.com | office: 218-237-3333 | fax: 218-237-3377



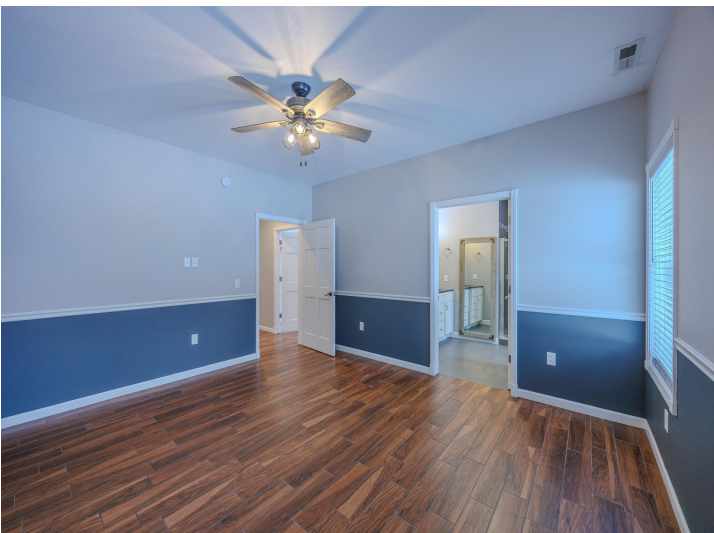
\$425,000
MLS 6822452 Residential
657 Frohn Road
Bemidji MN 56601



website: www.AffinityRealEstate.com | email: info@affinityrealestate.com | office: 218-237-3333 | fax: 218-237-3377



\$425,000
 MLS 6822452 Residential
 657 Frohn Road
 Bemidji MN 56601



website: www.AffinityRealEstate.com | email: info@affinityrealestate.com | office: 218-237-3333 | fax: 218-237-3377



\$425,000
MLS 6822452 Residential
657 Frohn Road
Bemidji MN 56601



website: www.AffinityRealEstate.com | email: info@affinityrealestate.com | office: 218-237-3333 | fax: 218-237-3377



\$425,000
 MLS 6822452 Residential
 657 Frohn Road
 Bemidji MN 56601



website: www.AffinityRealEstate.com | email: info@affinityrealestate.com | office: 218-237-3333 | fax: 218-237-3377



\$425,000
MLS 6822452 Residential
657 Frohn Road
Bemidji MN 56601



website: www.AffinityRealEstate.com | email: info@affinityrealestate.com | office: 218-237-3333 | fax: 218-237-3377



\$425,000
MLS 6822452 Residential
657 Frohn Road
Bemidji MN 56601



website: www.AffinityRealEstate.com | email: info@affinityrealestate.com | office: 218-237-3333 | fax: 218-237-3377

Affinity
REAL ESTATE INC

\$425,000
MLS 6822452 Residential
657 Frohn Road
Bemidji MN 56601



website: www.AffinityRealEstate.com | email: info@affinityrealestate.com | office: 218-237-3333 | fax: 218-237-3377



\$425,000
 MLS 6822452 Residential
 657 Frohn Road
 Bemidji MN 56601



website: www.AffinityRealEstate.com | email: info@affinityrealestate.com | office: 218-237-3333 | fax: 218-237-3377



\$425,000
 MLS 6822452 Residential
 657 Frohn Road
 Bemidji MN 56601

website: www.AffinityRealEstate.com | email: info@affinityrealestate.com | office: 218-237-3333 | fax:218-237-3377



\$425,000

MLS 6822452 Residential
657 Frohn Road
Bemidji MN 56601

website: www.AffinityRealEstate.com | email: info@affinityrealestate.com | office: 218-237-3333 | fax:218-237-3377



\$425,000

MLS 6822452 Residential
657 Frohn Road
Bemidji MN 56601