



MLS 6822726 Lake Home

\$675,000

1,916 sq ft
4 bedrooms
2 baths

14829 County Highway 4
Lake Park MN 56554

Waterfront: Ida

Status: Active

Description:

Priced \$104,000 Below Tax Value! Are you looking for tranquility, privacy, and the perfect escape? This beautifully updated lake home, just 40 minutes from Fargo/Moorhead, might be exactly what you've been waiting for. Welcome home to Lake Ida life. This 4-bed, 2-bath retreat features 222 feet of lakeshore, sandy swimming, and a lakeside bonus shop currently used as an office, workout space, and entertaining area. The main floor offers panoramic lake views from the updated kitchen, complete with quartz countertops, new backsplash, and all new appliances, flowing into the dining room and cozy living room with a gas fireplace. The main level features two bedrooms and a remodeled bathroom, with two additional bedrooms and another bathroom located upstairs.

Step outside onto your lakeside deck to soak in breathtaking views, enjoy a bonfire, or sip your morning coffee on one of the three patios.

Recent updates include the 24x14 bonus shop, a new well, LVP and carpet throughout, riprap, 10 x12 shed, water filtration system, shed, new decking for dock, insulated garage ceiling, and new concrete on the front patio.

Situated near The Roadhouse, Cormorant Village, and Lake Fika. This home offers the perfect blend of comfort, convenience, and lakeside serenity, nestled on one of the best lakes in the area. Inclusions - Washer/Dryer, 48' dock with bench and 8' ramp (new top in 2025), two additional 8' dock sections (one in the front of the bonus shop used as a deck), AquaThruster- Lake Muck & Weed Blower, Weed Roller and Custom 4/Full bunk bed set. Average Utilities- \$281/month for electricity, \$43 in Natural Gas and \$150/year for propane for fireplace. Gas line run to garage for future heater.

Additional Details:

Year Built	1976
Lot Acres	0.3
Lot Dimensions	222x IRR
Garage Stalls	2
School District	2889
Taxes	\$4,156
Taxes with Assessments	\$4,156
Tax Year	2025

Listed By: **RE/MAX** Natural Realty
 Affinity Real Estate Inc. participates in the Regional Multiple Listing Service of Minnesota, Inc Broker Reciprocity (sm) program, allowing us to display other broker's listings on our website. All properties are subject to prior sale, change or withdrawal.
 Take exit 15 onto CR-10 to Downer. Turn left onto 90th Ave. S. to Downer, drive 21 m... the right.



Call Affinity Real Estate

218-237-3333

info@affinityrealestate.com



Affinity Real Estate - 600 Park Avenue South - Park Rapids MN 56470



website: www.AffinityRealEstate.com | email: info@affinityrealestate.com | office: 218-237-3333 | fax:218-237-3377



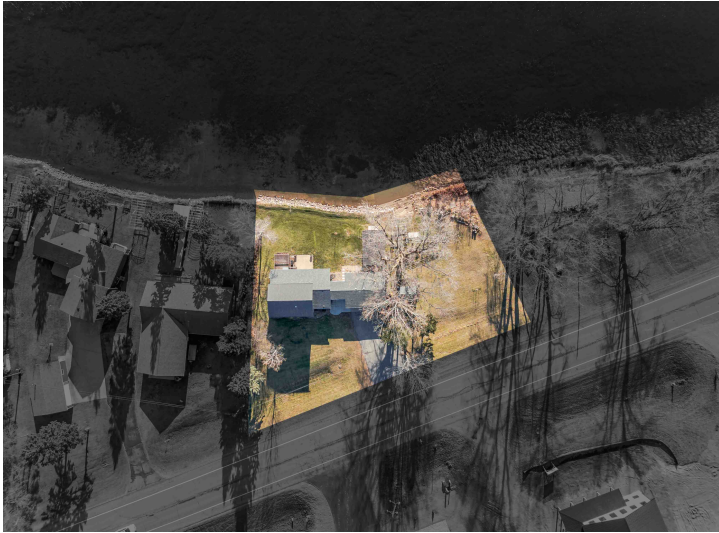
\$675,000
MLS 6822726 Lake Home
14829 County Highway 4
Lake Park MN 56554



website: www.AffinityRealEstate.com | email: info@affinityrealestate.com | office: 218-237-3333 | fax:218-237-3377



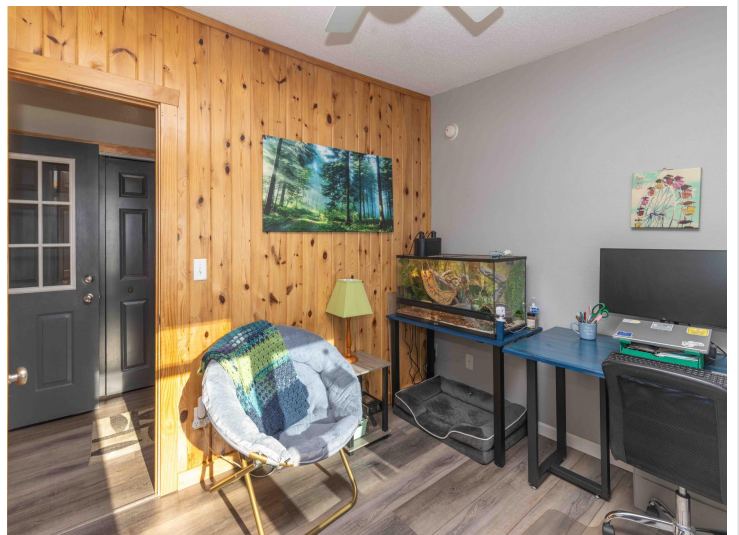
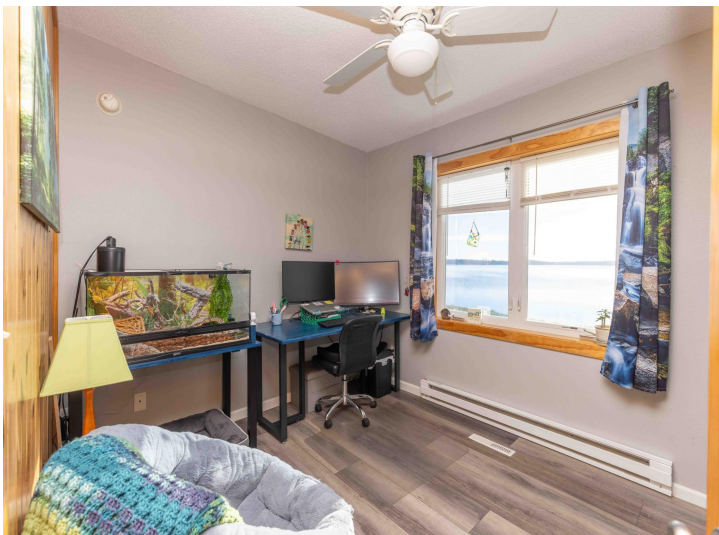
\$675,000
MLS 6822726 Lake Home
14829 County Highway 4
Lake Park MN 56554



website: www.AffinityRealEstate.com | email: info@affinityrealestate.com | office: 218-237-3333 | fax:218-237-3377



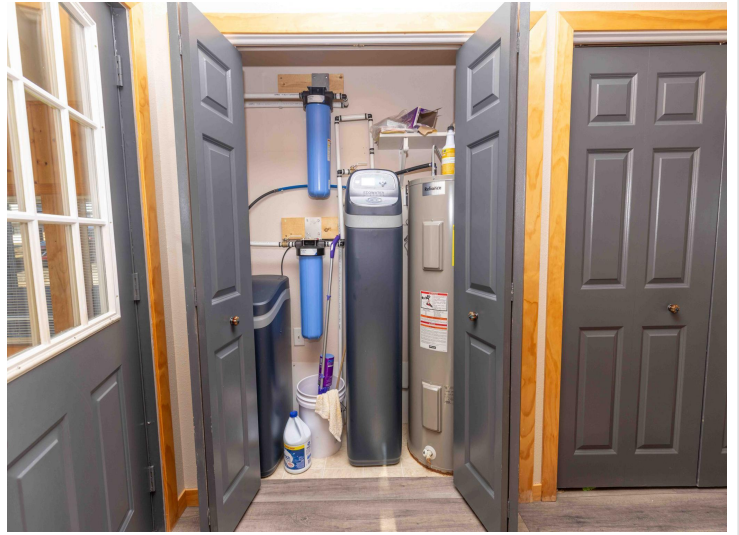
\$675,000
MLS 6822726 Lake Home
14829 County Highway 4
Lake Park MN 56554



website: www.AffinityRealEstate.com | email: info@affinityrealestate.com | office: 218-237-3333 | fax:218-237-3377

Affinity
REAL ESTATE INC

\$675,000
MLS 6822726 Lake Home
14829 County Highway 4
Lake Park MN 56554



website: www.AffinityRealEstate.com | email: info@affinityrealestate.com | office: 218-237-3333 | fax: 218-237-3377

Affinity
REAL ESTATE INC

\$675,000
MLS 6822726 Lake Home
14829 County Highway 4
Lake Park MN 56554



website: www.AffinityRealEstate.com | email: info@affinityrealestate.com | office: 218-237-3333 | fax:218-237-3377

Affinity
REAL ESTATE INC

\$675,000
MLS 6822726 Lake Home
14829 County Highway 4
Lake Park MN 56554



website: www.AffinityRealEstate.com | email: info@affinityrealestate.com | office: 218-237-3333 | fax: 218-237-3377

Affinity
REAL ESTATE INC

\$675,000
MLS 6822726 Lake Home
14829 County Highway 4
Lake Park MN 56554



website: www.AffinityRealEstate.com | email: info@affinityrealestate.com | office: 218-237-3333 | fax: 218-237-3377

Affinity
REAL ESTATE INC

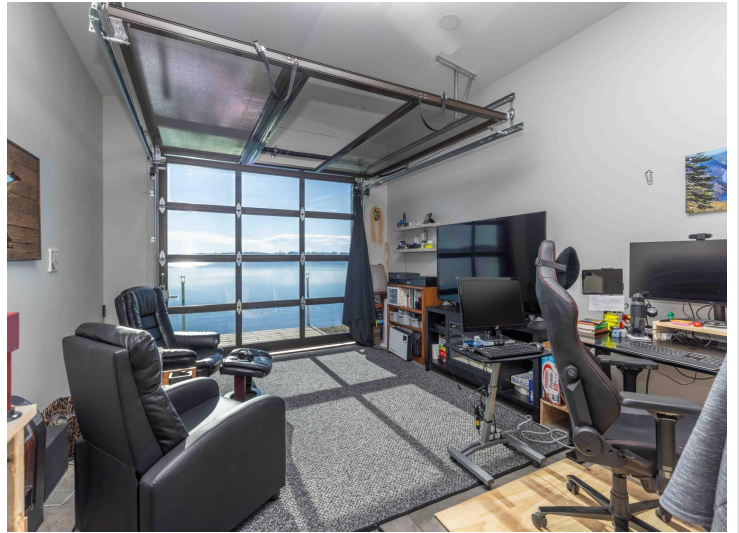
\$675,000
MLS 6822726 Lake Home
14829 County Highway 4
Lake Park MN 56554



website: www.AffinityRealEstate.com | email: info@affinityrealestate.com | office: 218-237-3333 | fax:218-237-3377



\$675,000
MLS 6822726 Lake Home
14829 County Highway 4
Lake Park MN 56554



website: www.AffinityRealEstate.com | email: info@affinityrealestate.com | office: 218-237-3333 | fax:218-237-3377



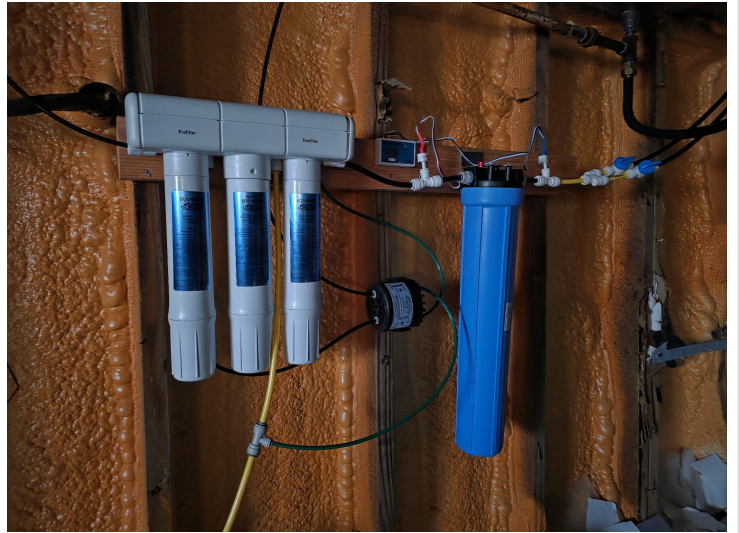
\$675,000
MLS 6822726 Lake Home
14829 County Highway 4
Lake Park MN 56554



website: www.AffinityRealEstate.com | email: info@affinityrealestate.com | office: 218-237-3333 | fax:218-237-3377

Affinity
REAL ESTATE INC

\$675,000
MLS 6822726 Lake Home
14829 County Highway 4
Lake Park MN 56554



website: www.AffinityRealEstate.com | email: info@affinityrealestate.com | office: 218-237-3333 | fax:218-237-3377



\$675,000
MLS 6822726 Lake Home
14829 County Highway 4
Lake Park MN 56554

website: www.AffinityRealEstate.com | email: info@affinityrealestate.com | office: 218-237-3333 | fax:218-237-3377



\$675,000

MLS 6822726 Lake Home
14829 County Highway 4
Lake Park MN 56554