

MLS 6823439 Land

**\$309,999**

78 Acres  
Raw Land

7235 120th Street  
Motley MN 56466

Status: Closed

**Description:**

Don't miss this rare chance to own 78 acres of exceptional hunting and recreational land or future homesite just outside Motley, MN. This expansive property is fully set up for success, featuring six established food plots, a network of well-maintained trails, and a secure gated entrance for privacy and peace of mind. Multiple elevated banks and terrain blinds are strategically placed throughout the land, offering ideal vantage points for both archery and rifle hunters. Electrical is onsite and ready to use. The hunting history here is outstanding. This ground has produced numerous big bucks over the years and consistently holds quality deer thanks to its diverse habitat and food sources. The property is also rich in wildlife, attracting impressive numbers of turkeys, ducks, and geese—making it a destination for both big-game and bird hunters.

**Additional Details:**

Lot Acres	78
Lot Dimensions	1320x2640x1320x2597
School District	1062
Taxes	\$974
Taxes with Assessments	\$974
Tax Year	2025

**Additional Features:**

**Driving Directions:**

1 mile north of Motley on Highway 64, 1/2 mile west on #33 property on the south side.



Listed By:  
eXp Realty

Affinity Real Estate Inc. participates in the Regional Multiple Listing Service of Minnesota, Inc Broker Reciprocity (sm) program, allowing us to display other broker's listings on our website. All properties are subject to prior sale, change or withdrawal.



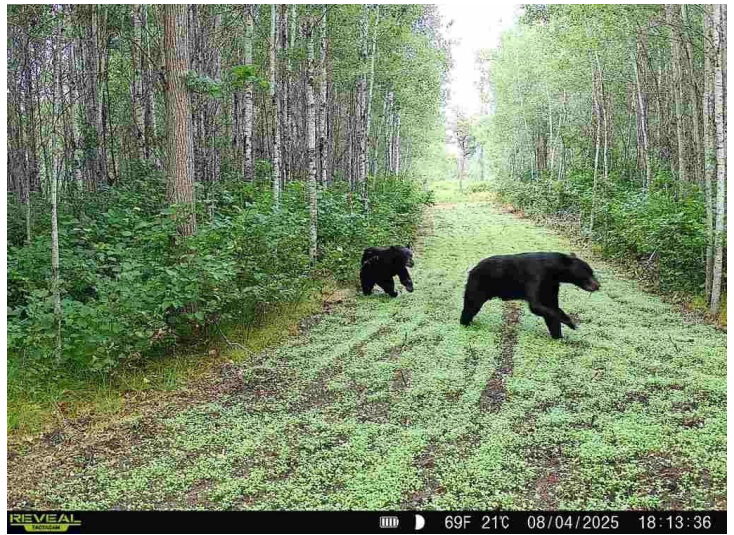
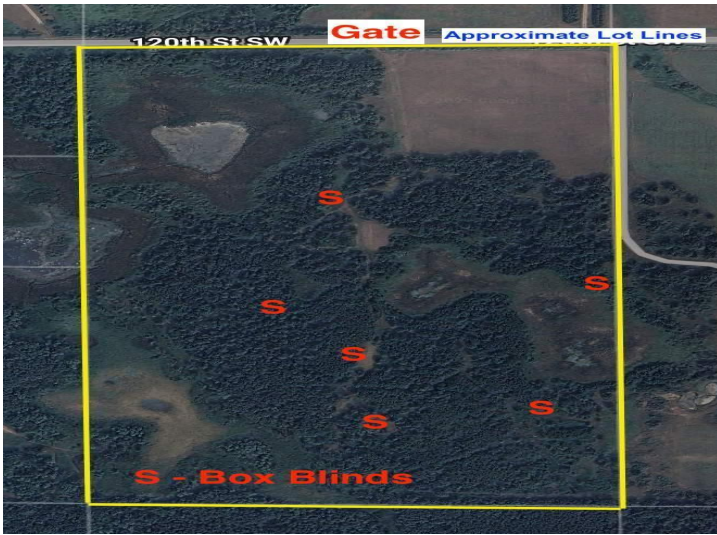
**Call Affinity Real Estate**

**218-237-3333**

**info@affinityrealestate.com**



**Affinity Real Estate - 600 Park Avenue South - Park Rapids MN 56470**



website: [www.AffinityRealEstate.com](http://www.AffinityRealEstate.com) | email: [info@affinityrealestate.com](mailto:info@affinityrealestate.com) | office: 218-237-3333 | fax:218-237-3377



**\$309,999**  
MLS 6823439 Land  
7235 120th Street  
Motley MN 56466



website: [www.AffinityRealEstate.com](http://www.AffinityRealEstate.com) | email: [info@affinityrealestate.com](mailto:info@affinityrealestate.com) | office: 218-237-3333 | fax:218-237-3377

**Affinity**  
REAL ESTATE INC

**\$309,999**  
MLS 6823439 Land  
7235 120th Street  
Motley MN 56466



website: [www.AffinityRealEstate.com](http://www.AffinityRealEstate.com) | email: [info@affinityrealestate.com](mailto:info@affinityrealestate.com) | office: 218-237-3333 | fax:218-237-3377



**\$309,999**  
MLS 6823439 Land  
7235 120th Street  
Motley MN 56466



website: [www.AffinityRealEstate.com](http://www.AffinityRealEstate.com) | email: [info@affinityrealestate.com](mailto:info@affinityrealestate.com) | office: 218-237-3333 | fax:218-237-3377



**\$309,999**  
MLS 6823439 Land  
7235 120th Street  
Motley MN 56466