



MLS 6823511 Residential

\$850,000

1,520 sq ft
2 bedrooms
2 baths

4681 Mission Road
Bemidji MN 56601

Status: Active

Description:

Lakeside Luxury on Big Lake!! Welcome to your dream Northwoods retreat! Set on the crystal-clear shores of Big Lake in Beltrami County, this 2-bedroom, 2-bath lake home with an additional office seamlessly blends modern luxury with thoughtful, age-friendly design. Step inside to discover soaring vaulted ceilings, gleaming granite countertops, custom kitchen with stainless steel appliances, and a chef-inspired outdoor kitchen—an entertainer's paradise outside and in with panoramic lake views. The open-concept layout features in-floor heat, efficient ductless mini splits, and a cozy fireplace backup for those classic Minnesota winter nights. The primary suite offers true serenity, zero-step entry shower, and wide accessible hallways—perfect for comfort and aging in place. An oversized garage provides generous room for vehicles, watercraft, and all your Up North adventure gear. Enjoy breathtaking water views, a roll-away dock, and direct access to premier year-round recreation—boating, fishing, snowmobiling, or simply unwinding by the shoreline. Don't miss this rare chance to own a low-maintenance, high-quality lakefront home, crafted with comfort, convenience, and natural beauty at the forefront.

Additional Details:

Year Built	2023
Lot Acres	1.52
Lot Dimensions	See aerial map
Garage Stalls	2
School District	1386
Taxes	\$2,202
Taxes with Assessments	\$2,342
Tax Year	2025

Additional Features:

Fuel: Array **Heat:** Fireplace(s), In-Floor Heating

Driving Directions:

From Bemidji take Power Dam Rd Road NE (County 12) to a Left onto Mission Road NE and follow to the property on the Left located at 4681 Mission Road NE.



Listed By:
Edina Realty, Inc.

Affinity Real Estate Inc. participates in the Regional Multiple Listing Service of Minnesota, Inc Broker Reciprocity (sm) program, allowing us to display other broker's listings on our website. All properties are subject to prior sale, change or withdrawal.



Call Affinity Real Estate

218-237-3333

info@affinityrealestate.com



Affinity Real Estate - 600 Park Avenue South - Park Rapids MN 56470



website: www.AffinityRealEstate.com | email: info@affinityrealestate.com | office: 218-237-3333 | fax: 218-237-3377

Affinity
REAL ESTATE INC

\$850,000
MLS 6823511 Residential
4681 Mission Road
Bemidji MN 56601



website: www.AffinityRealEstate.com | email: info@affinityrealestate.com | office: 218-237-3333 | fax: 218-237-3377

Affinity
REAL ESTATE INC

\$850,000
MLS 6823511 Residential
4681 Mission Road
Bemidji MN 56601



GROSS INTERNAL AREA
FLOOR PLAN 1,424 S.F.
TOTAL: 1,424 S.F.
SIZES AND DIMENSIONS ARE APPROXIMATE, ACTUAL MAY VARY.



website: www.AffinityRealEstate.com | email: info@affinityrealestate.com | office: 218-237-3333 | fax: 218-237-3377

Affinity
REAL ESTATE INC

\$850,000
MLS 6823511 Residential
4681 Mission Road
Bemidji MN 56601



website: www.AffinityRealEstate.com | email: info@affinityrealestate.com | office: 218-237-3333 | fax: 218-237-3377



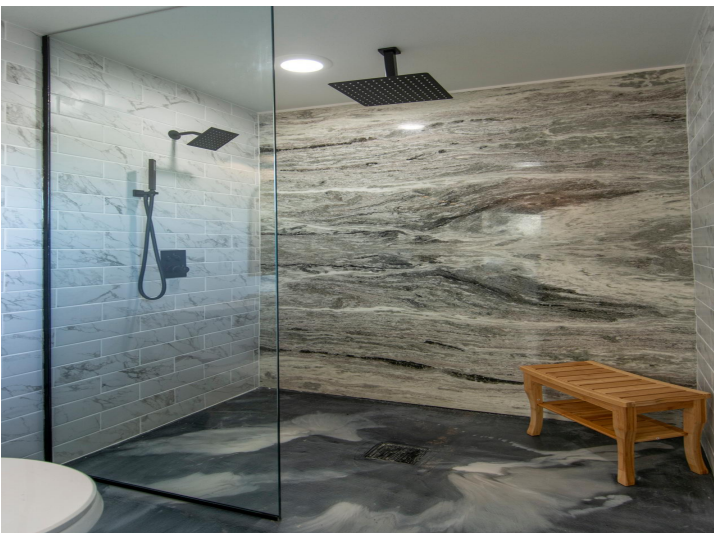
\$850,000
 MLS 6823511 Residential
 4681 Mission Road
 Bemidji MN 56601



website: www.AffinityRealEstate.com | email: info@affinityrealestate.com | office: 218-237-3333 | fax: 218-237-3377

Affinity
REAL ESTATE INC

\$850,000
MLS 6823511 Residential
4681 Mission Road
Bemidji MN 56601



website: www.AffinityRealEstate.com | email: info@affinityrealestate.com | office: 218-237-3333 | fax: 218-237-3377

Affinity
REAL ESTATE INC

\$850,000
MLS 6823511 Residential
4681 Mission Road
Bemidji MN 56601



website: www.AffinityRealEstate.com | email: info@affinityrealestate.com | office: 218-237-3333 | fax: 218-237-3377

Affinity
REAL ESTATE INC

\$850,000
MLS 6823511 Residential
4681 Mission Road
Bemidji MN 56601



website: www.AffinityRealEstate.com | email: info@affinityrealestate.com | office: 218-237-3333 | fax: 218-237-3377



\$850,000
MLS 6823511 Residential
4681 Mission Road
Bemidji MN 56601