



MLS 6823807 Land

\$133,900

80.12 Acres

Raw Land

0000 Meadowview Road
Brainerd MN 56401

Status: Active

Description:

This 80.12-acre partially wooded property in Brainerd, MN offers the perfect blend of privacy, recreation, and small-town charm. The land puts you close to the area's famous lakes, golf courses, and trail systems, giving you endless outdoor enjoyment right at your doorstep with great hunting grounds. Brainerd's welcoming community, great local dining, and year-round events make this a place where you'll truly love putting down roots. With the Twin Cities just over two hours away, you can enjoy the peace of the North while staying connected to a major metro area. Priced below market value, this is easily one of the best deals available today! *A portion of this property is classified as emergent wetland.

Additional Details:

Lot Acres	80.12
Lot Dimensions	13217x2636x1318x2636
School District	896
Taxes	\$382
Taxes with Assessments	\$382
Tax Year	2025

Additional Features:

Driving Directions:

From County Rd 2 SE turn right onto Count Rd 132 SE/Meadowview Rd SE. Continue onto Meadowview Rd. Destination will be on the left.



Listed By:
Jeff Hagel

Affinity Real Estate Inc. participates in the Regional Multiple Listing Service of Minnesota, Inc Broker Reciprocity (sm) program, allowing us to display other broker's listings on our website. All properties are subject to prior sale, change or withdrawal.



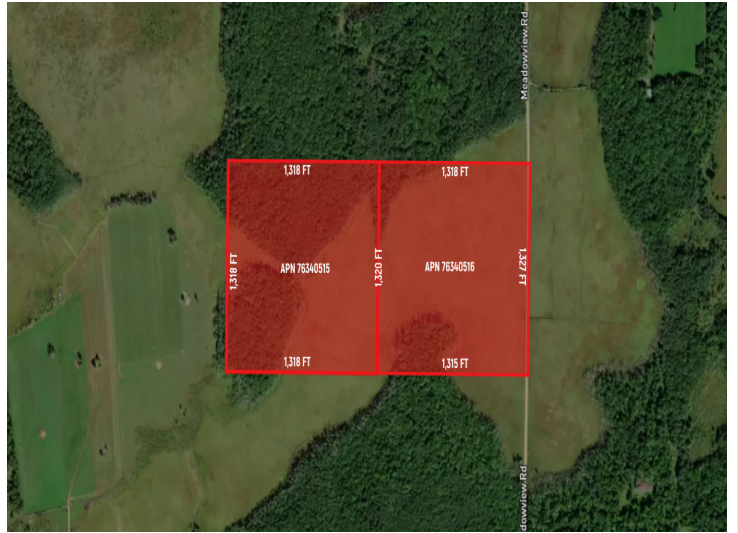
Call Affinity Real Estate

218-237-3333

info@affinityrealestate.com



Affinity Real Estate - 600 Park Avenue South - Park Rapids MN 56470



website: www.AffinityRealEstate.com | email: info@affinityrealestate.com | office: 218-237-3333 | fax: 218-237-3377



\$133,900

MLS 6823807 Land
0000 Meadowview Road
Brainerd MN 56401