



MLS 6824055 Residential

\$187,200

1,848 sq ft
3 bedrooms
2 baths

25701 Bambi Lane
Brainerd MN 56401

Status: Active

Description:

Awesome Borden lake view and access. This 3BR, 2BA home has a great owners suite with garden tub and private shower! Hardwood floors with vaulted ceilings, built in kitchen pantry and a gas fireplace in the living room. Single stall garage

Additional Details:

Year Built	2009
Lot Acres	1800
Lot Dimensions	30x60
Garage Stalls	1
School District	904
Taxes	\$736
Taxes with Assessments	\$761
Tax Year	2025

Additional Features:

Fuel: Array **Heat:** Forced Air

Driving Directions:

From Brainerd, hwy 18 east aprox 12 miles to south on co rd 10. Aprox 4 miles to Deer Run road on the left. Turn in, then take the first left to property at the end. Fire #25701



Listed By:
Keller Williams Realty Professionals

Affinity Real Estate Inc. participates in the Regional Multiple Listing Service of Minnesota, Inc Broker Reciprocity (sm) program, allowing us to display other broker's listings on our website. All properties are subject to prior sale, change or withdrawal.



Call Affinity Real Estate

218-237-3333

info@affinityrealestate.com



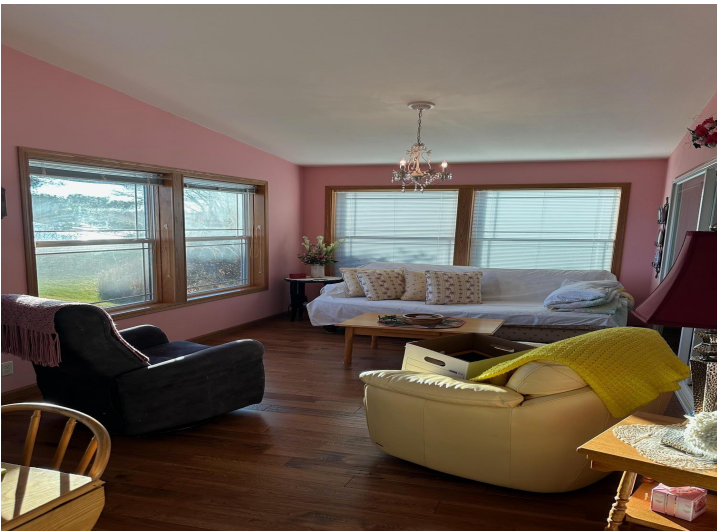
Affinity Real Estate - 600 Park Avenue South - Park Rapids MN 56470



website: www.AffinityRealEstate.com | email: info@affinityrealestate.com | office: 218-237-3333 | fax:218-237-3377



\$187,200
MLS 6824055 Residential
25701 Bambi Lane
Brainerd MN 56401



website: www.AffinityRealEstate.com | email: info@affinityrealestate.com | office: 218-237-3333 | fax:218-237-3377

Affinity
REAL ESTATE INC

\$187,200
MLS 6824055 Residential
25701 Bambi Lane
Brainerd MN 56401



website: www.AffinityRealEstate.com | email: info@affinityrealestate.com | office: 218-237-3333 | fax:218-237-3377

Affinity
REAL ESTATE INC

\$187,200
MLS 6824055 Residential
25701 Bambi Lane
Brainerd MN 56401

website: www.AffinityRealEstate.com | email: info@affinityrealestate.com | office: 218-237-3333 | fax:218-237-3377



\$187,200
MLS 6824055 Residential
25701 Bambi Lane
Brainerd MN 56401