



MLS 6824377 Commercial

**\$550,000**

210 McKay Avenue  
Alexandria MN 56308

Status: Active

**Description:**

Don't miss out on the opportunity to own a rare piece of prime real estate on the corner of County Rd 82 and McKay Ave! This building was previously used as a freight company and comes fit with 8 loading docks and an additional heated garage space with separate access. Over 4,400 square feet of storage, shop and a small office ready to be built out to fit your needs. Building is sold as is. Agent is related to seller.

**Additional Details:**

Year Built	1997
Lot Acres	0.95
Lot Dimensions	263 x 133 x 252 x 213
Garage Stalls	10
School District	206
Taxes	\$5,112
Taxes with Assessments	\$5,112
Tax Year	2024

**Additional Features:**

**Fuel:** Natural Gas **Garage:** 10 **Heat:** Forced Air, Space Heater **Sewer:** City Sewer/Connected **Water:** Well **Air Conditioning:** None

**Driving Directions:**

From County Rd 82, head north on McKay Ave N. Building is on your left.



Listed By:  
Alex Brokers Realty, LLC

Affinity Real Estate Inc. participates in the Regional Multiple Listing Service of Minnesota, Inc Broker Reciprocity (sm) program, allowing us to display other broker's listings on our website. All properties are subject to prior sale, change or withdrawal.



Call Affinity Real Estate

**218-237-3333**

[info@affinityrealestate.com](mailto:info@affinityrealestate.com)



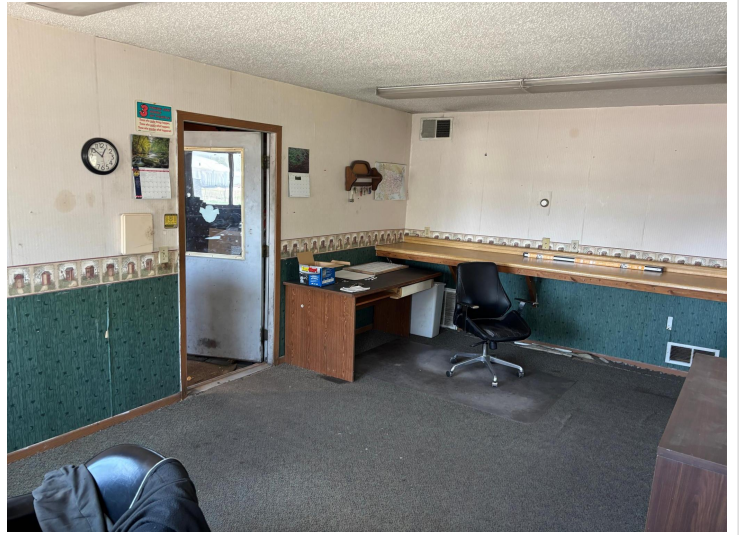
Affinity Real Estate - 600 Park Avenue South - Park Rapids MN 56470



website: [www.AffinityRealEstate.com](http://www.AffinityRealEstate.com) | email: [info@affinityrealestate.com](mailto:info@affinityrealestate.com) | office: 218-237-3333 | fax:218-237-3377



**\$550,000**  
MLS 6824377 Commercial  
210 Mckay Avenue  
Alexandria MN 56308



website: [www.AffinityRealEstate.com](http://www.AffinityRealEstate.com) | email: [info@affinityrealestate.com](mailto:info@affinityrealestate.com) | office: 218-237-3333 | fax:218-237-3377



**\$550,000**  
MLS 6824377 Commercial  
210 Mckay Avenue  
Alexandria MN 56308