



MLS 6824511 Residential

\$829,900

2,104 sq ft
3 bedrooms
4 baths

6458 21st Avenue
Pequot Lakes MN 56472

Status: Active

Description:

This property is where luxury meets simple living. You will love the open floor plan and one-level living that this home has to offer with custom design elements throughout. The home features two bedrooms in the main living space, a loft with three built-in bunks, and a private suite with a separate entrance above the shop. Beautiful barnwood vaulted ceilings and natural elements create a warm and inviting living space. The character of the space is highlighted by a beautiful custom antique wet bar. The kitchen is complete with high-end appliances, custom cabinetry, and details that elevate the space. Each bedroom and bathroom have been designed with attention to detail and design. Attached to the home is a 40x64 heated shop ready to store your toys and host you, your family and friends for the next get together. The shop features two 14-foot doors, a 1/2 bath, and a large built-in bar. The grounds have been meticulously cared for and professionally landscaped creating your own little sanctuary. This lot is very private with a rural feeling just minutes from area amenities.

Additional Details:

Year Built	2023
Lot Acres	4.843
Lot Dimensions	274 x 680 x 425 x 568
Garage Stalls	2
School District	909
Taxes	\$2,156
Taxes with Assessments	\$2,222
Tax Year	2025

Additional Features:

Basement: None **Fuel:** Array **Garage:** 2 **Heat:** Baseboard, Forced Air, In-Floor Heating **Sewer:** Mound Septic, Private Sewer **Water:** Drilled, Private, Well **Air Conditioning:** Central Air

Driving Directions:

From Hwy 371, turn west on Patriot Avenue, then turn left onto County Road 168. Turn left on 21st Avenue SW. Property is on the left.



Listed By:
Larson Group Real Estate/Kelle

Affinity Real Estate Inc. participates in the Regional Multiple Listing Service of Minnesota, Inc Broker Reciprocity (sm) program, allowing us to display other broker's listings on our website. All properties are subject to prior sale, change or withdrawal.



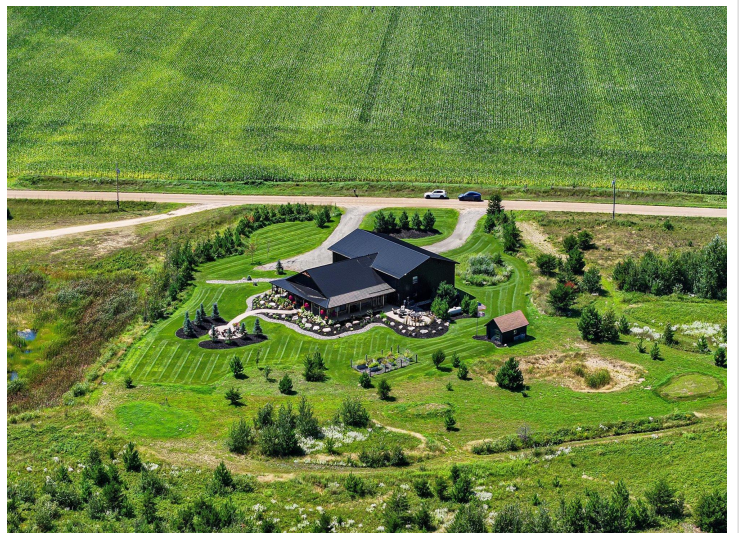
Call Affinity Real Estate

218-237-3333

info@affinityrealestate.com



Affinity Real Estate - 600 Park Avenue South - Park Rapids MN 56470



website: www.AffinityRealEstate.com | email: info@affinityrealestate.com | office: 218-237-3333 | fax: 218-237-3377

Affinity
REAL ESTATE INC

\$829,900
MLS 6824511 Residential
6458 21st Avenue
Pequot Lakes MN 56472



website: www.AffinityRealEstate.com | email: info@affinityrealestate.com | office: 218-237-3333 | fax: 218-237-3377

Affinity
REAL ESTATE INC

\$829,900
MLS 6824511 Residential
6458 21st Avenue
Pequot Lakes MN 56472



website: www.AffinityRealEstate.com | email: info@affinityrealestate.com | office: 218-237-3333 | fax: 218-237-3377

Affinity
REAL ESTATE INC

\$829,900
MLS 6824511 Residential
6458 21st Avenue
Pequot Lakes MN 56472



website: www.AffinityRealEstate.com | email: info@affinityrealestate.com | office: 218-237-3333 | fax: 218-237-3377

Affinity
REAL ESTATE INC

\$829,900
MLS 6824511 Residential
6458 21st Avenue
Pequot Lakes MN 56472



website: www.AffinityRealEstate.com | email: info@affinityrealestate.com | office: 218-237-3333 | fax: 218-237-3377



\$829,900
 MLS 6824511 Residential
 6458 21st Avenue
 Pequot Lakes MN 56472



website: www.AffinityRealEstate.com | email: info@affinityrealestate.com | office: 218-237-3333 | fax: 218-237-3377



\$829,900
 MLS 6824511 Residential
 6458 21st Avenue
 Pequot Lakes MN 56472



website: www.AffinityRealEstate.com | email: info@affinityrealestate.com | office: 218-237-3333 | fax: 218-237-3377

Affinity
REAL ESTATE INC

\$829,900
MLS 6824511 Residential
6458 21st Avenue
Pequot Lakes MN 56472



website: www.AffinityRealEstate.com | email: info@affinityrealestate.com | office: 218-237-3333 | fax: 218-237-3377



\$829,900
 MLS 6824511 Residential
 6458 21st Avenue
 Pequot Lakes MN 56472