



MLS 6824710 Residential

**\$588,000**

1,600 sq ft  
3 bedrooms  
2 baths

11005 320th Street  
Park Rapids MN 56470

Status: Active

#### Description:

Welcome to your private country paradise! This property is located in the heart of vacation country near Itasca State Park and Little Mantrap Lake and is situated on nearly 20 gorgeous acres. This well maintained home boasts vaulted knotty pine ceilings, open kitchen and living area on the main level, partially finished walk-out basement with full bathroom, along with an attached 2 stall garage that is both heated and finished! This beautiful property offers loads of storage for all your toys with an 80'x40' steel pole building, and original 1931 farmstead wooden barn with metal roofing. As an added bonus, this property also includes a bunkhouse that can be used for guests, seasonal rental opportunities, or bring your own ideas. With abundant wildlife, access to state ATV and snowmobile trails, and proximity to area lakes, this property offers the true "Up North" experience. Don't miss your chance on acquiring the country estate you've always been dreaming of!

#### Additional Details:

Year Built	2000
Lot Acres	19.63
Lot Dimensions	660x1291
Garage Stalls	3
School District	1384
Taxes	\$1,778
Taxes with Assessments	\$1,778
Tax Year	2025

#### Additional Features:

**Basement:** Block, Full, Partially Finished, Walkout **Fuel:** Array **Garage:** 3 **Heat:** Forced Air **Sewer:** Private Sewer **Water:** Well **Air Conditioning:** Central Air

#### Driving Directions:

North on US-71 from Park Rapids 17 miles. Right onto 320th St. Follow 320th St. to 11005. Driveway on the right.



Listed By:  
Coldwell Banker Realty

Affinity Real Estate Inc. participates in the Regional Multiple Listing Service of Minnesota, Inc Broker Reciprocity (sm) program, allowing us to display other broker's listings on our website. All properties are subject to prior sale, change or withdrawal.



Call Affinity Real Estate

**218-237-3333**

[info@affinityrealestate.com](mailto:info@affinityrealestate.com)



Affinity Real Estate - 600 Park Avenue South - Park Rapids MN 56470



website: [www.AffinityRealEstate.com](http://www.AffinityRealEstate.com) | email: [info@affinityrealestate.com](mailto:info@affinityrealestate.com) | office: 218-237-3333 | fax: 218-237-3377



**\$588,000**  
 MLS 6824710 Residential  
 11005 320th Street  
 Park Rapids MN 56470





website: [www.AffinityRealEstate.com](http://www.AffinityRealEstate.com) | email: [info@affinityrealestate.com](mailto:info@affinityrealestate.com) | office: 218-237-3333 | fax: 218-237-3377

**Affinity**  
REAL ESTATE INC

**\$588,000**  
MLS 6824710 Residential  
11005 320th Street  
Park Rapids MN 56470





website: [www.AffinityRealEstate.com](http://www.AffinityRealEstate.com) | email: [info@affinityrealestate.com](mailto:info@affinityrealestate.com) | office: 218-237-3333 | fax: 218-237-3377

**Affinity**  
REAL ESTATE INC

**\$588,000**  
MLS 6824710 Residential  
11005 320th Street  
Park Rapids MN 56470





website: [www.AffinityRealEstate.com](http://www.AffinityRealEstate.com) | email: [info@affinityrealestate.com](mailto:info@affinityrealestate.com) | office: 218-237-3333 | fax: 218-237-3377

**Affinity**  
REAL ESTATE INC

**\$588,000**  
MLS 6824710 Residential  
11005 320th Street  
Park Rapids MN 56470



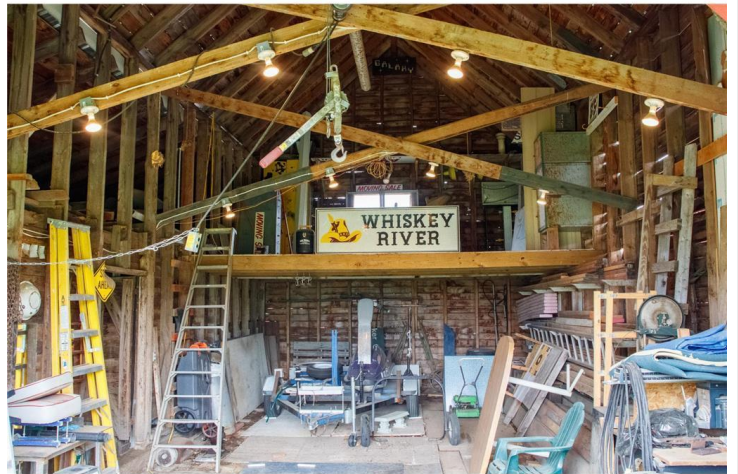
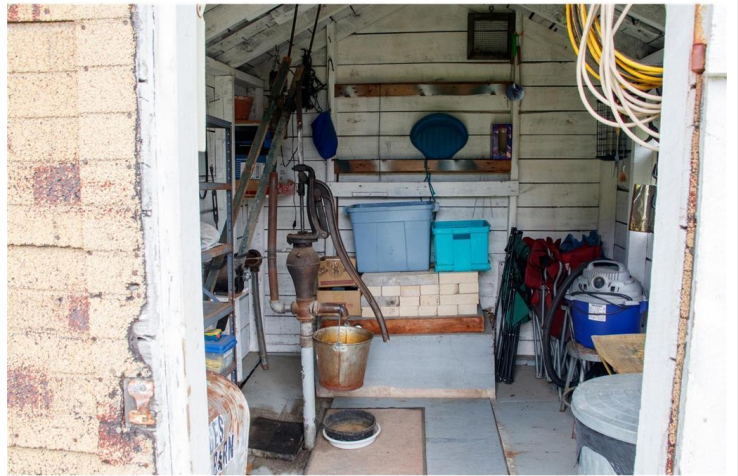


website: [www.AffinityRealEstate.com](http://www.AffinityRealEstate.com) | email: [info@affinityrealestate.com](mailto:info@affinityrealestate.com) | office: 218-237-3333 | fax: 218-237-3377

**Affinity**  
REAL ESTATE INC

**\$588,000**  
MLS 6824710 Residential  
11005 320th Street  
Park Rapids MN 56470





website: [www.AffinityRealEstate.com](http://www.AffinityRealEstate.com) | email: [info@affinityrealestate.com](mailto:info@affinityrealestate.com) | office: 218-237-3333 | fax: 218-237-3377

**Affinity**  
REAL ESTATE INC

**\$588,000**  
MLS 6824710 Residential  
11005 320th Street  
Park Rapids MN 56470





website: [www.AffinityRealEstate.com](http://www.AffinityRealEstate.com) | email: [info@affinityrealestate.com](mailto:info@affinityrealestate.com) | office: 218-237-3333 | fax: 218-237-3377

**Affinity**  
REAL ESTATE INC

**\$588,000**  
MLS 6824710 Residential  
11005 320th Street  
Park Rapids MN 56470





website: [www.AffinityRealEstate.com](http://www.AffinityRealEstate.com) | email: [info@affinityrealestate.com](mailto:info@affinityrealestate.com) | office: 218-237-3333 | fax: 218-237-3377



**\$588,000**  
MLS 6824710 Residential  
11005 320th Street  
Park Rapids MN 56470