



MLS 6824939 Land

\$150,000

37.39 Acres

Other

TBD 35515 State Highway 87
Frazee MN 56544

Status: Active

Description:

Land is separated from homestead County record shows djainfield from the house is on the property owners are verifying location could need an easement if sold separated

Additional Details:

Lot Acres	37.39
Lot Dimensions	37
School District	1106
Taxes	\$322
Taxes with Assessments	\$322
Tax Year	2025

Additional Features:

Driving Directions:

Follow hwy 87 out of Frazee two miles on the right



Listed By:
The Real Estate Company of Detroit Lakes

Affinity Real Estate Inc. participates in the Regional Multiple Listing Service of Minnesota, Inc Broker Reciprocity (sm) program, allowing us to display other broker's listings on our website. All properties are subject to prior sale, change or withdrawal.



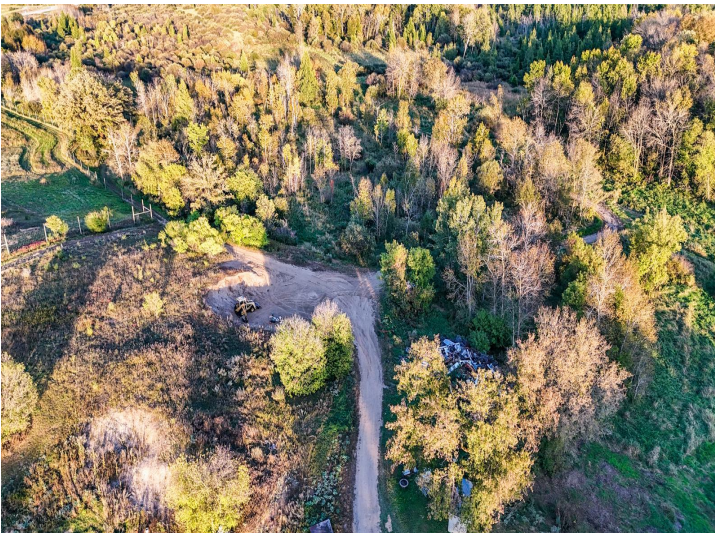
Call Affinity Real Estate

218-237-3333

info@affinityrealestate.com



Affinity Real Estate - 600 Park Avenue South - Park Rapids MN 56470



website: www.AffinityRealEstate.com | email: info@affinityrealestate.com | office: 218-237-3333 | fax: 218-237-3377



\$150,000
 MLS 6824939 Land
 TBD 35515 State Highway
 87
 Frazee MN 56544



website: www.AffinityRealEstate.com | email: info@affinityrealestate.com | office: 218-237-3333 | fax: 218-237-3377



\$150,000
MLS 6824939 Land
TBD 35515 State Highway
87
Frazee MN 56544