



MLS 6825454 Residential

\$185,000

1,260 sq ft
3 bedrooms
2 baths

200 2nd Street
Wadena MN 56482

Status: Active

Description:

Charming 3 bedroom, 2 bath home sits on a desirable corner lot in town, offering both convenience and comfort. Enjoy a private, fenced-in yard for outdoor gatherings and a relaxing three season screened porch. Inside, the home offers great potential for building equity with an 400 sq/ft unfinished upstairs living space that is framed and ready for finishing. The epoxied basement provides a clean start for future living and includes a bathroom, laundry and stored, offering more opportunities to expand.

A solid home with valuable updates, outdoor privacy, and room to customize—move in now and make it your own over time.

Additional Details:

Year Built	1945
Lot Acres	0.183
Lot Dimensions	100x80
Garage Stalls	2
School District	1053
Taxes	\$1,850
Taxes with Assessments	\$1,850
Tax Year	2025

Additional Features:

Basement: Unfinished **Fuel:** Array **Garage:** 2 **Heat:** Forced Air **Sewer:** City Sewer/Connected **Water:** City Water/Connected **Air Conditioning:** Central Air

Driving Directions:

From Hwy 10, South on 71/Jefferson, Right on Bryant Ave SW, property on left.



Listed By:
Structure Real Estate LLC

Affinity Real Estate Inc. participates in the Regional Multiple Listing Service of Minnesota, Inc Broker Reciprocity (sm) program, allowing us to display other broker's listings on our website. All properties are subject to prior sale, change or withdrawal.



Call Affinity Real Estate

218-237-3333

info@affinityrealestate.com



Affinity Real Estate - 600 Park Avenue South - Park Rapids MN 56470



website: www.AffinityRealEstate.com | email: info@affinityrealestate.com | office: 218-237-3333 | fax: 218-237-3377

Affinity
REAL ESTATE INC

\$185,000
MLS 6825454 Residential
200 2nd Street
Wadena MN 56482



website: www.AffinityRealEstate.com | email: info@affinityrealestate.com | office: 218-237-3333 | fax: 218-237-3377

Affinity
REAL ESTATE INC

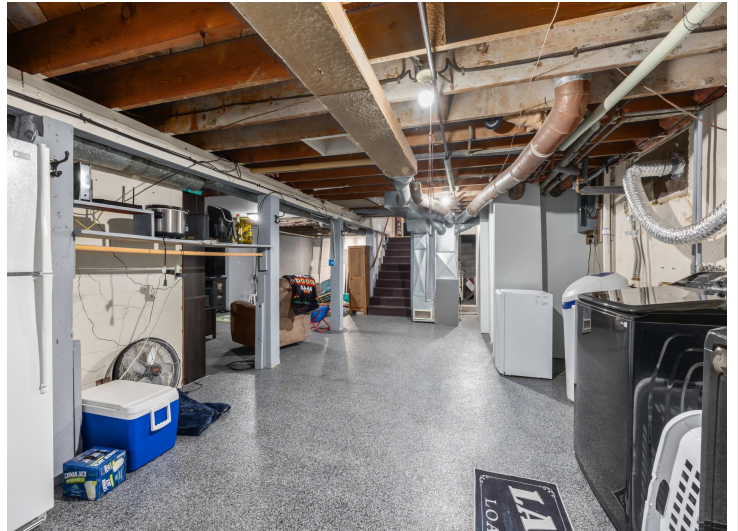
\$185,000
MLS 6825454 Residential
200 2nd Street
Wadena MN 56482



website: www.AffinityRealEstate.com | email: info@affinityrealestate.com | office: 218-237-3333 | fax: 218-237-3377

Affinity
REAL ESTATE INC

\$185,000
MLS 6825454 Residential
200 2nd Street
Wadena MN 56482



website: www.AffinityRealEstate.com | email: info@affinityrealestate.com | office: 218-237-3333 | fax: 218-237-3377

Affinity
REAL ESTATE INC

\$185,000
MLS 6825454 Residential
200 2nd Street
Wadena MN 56482



website: www.AffinityRealEstate.com | email: info@affinityrealestate.com | office: 218-237-3333 | fax: 218-237-3377



\$185,000
 MLS 6825454 Residential
 200 2nd Street
 Wadena MN 56482



website: www.AffinityRealEstate.com | email: info@affinityrealestate.com | office: 218-237-3333 | fax: 218-237-3377



\$185,000
 MLS 6825454 Residential
 200 2nd Street
 Wadena MN 56482