



MLS 6825484 Commercial

\$230,000

26468 US 71
Park Rapids MN 56470

Status: Active

Description:

Prime commercial space is available off Highway 71, perfectly positioned to take advantage of the high traffic in the area! This exceptional location is ideal for retail, restaurant, Event space, or service-oriented businesses. There is currently a new kitchen, bar, restaurant area, and mini golf on the property. This space offers unmatched visibility with generous square footage that can be customized to fit your specific needs, abundant parking for your customers, and easy access from the busy highway. Call us today for more details and to schedule a viewing!

Additional Details:

Year Built	1988
Lot Acres	2.73
Lot Dimensions	Irregular
Garage Stalls	2
School District	1384
Taxes	(unreported)
Taxes with Assessments	(unreported)
Tax Year	2025

Additional Features:

Fuel: Array **Garage:** 2 **Heat:** Forced Air **Sewer:** Private Sewer, Tank with Drainage Field **Water:** Drilled, Private, Well

Driving Directions:

From Park Rapids drive North on 71 to property on right.



Listed By:
Wolff & Simon Real Estate

Affinity Real Estate Inc. participates in the Regional Multiple Listing Service of Minnesota, Inc Broker Reciprocity (sm) program, allowing us to display other broker's listings on our website. All properties are subject to prior sale, change or withdrawal.



Call Affinity Real Estate

218-237-3333

info@affinityrealestate.com



Affinity Real Estate - 600 Park Avenue South - Park Rapids MN 56470



website: www.AffinityRealEstate.com | email: info@affinityrealestate.com | office: 218-237-3333 | fax: 218-237-3377



\$230,000
 MLS 6825484 Commercial
 26468 US 71
 Park Rapids MN 56470



website: www.AffinityRealEstate.com | email: info@affinityrealestate.com | office: 218-237-3333 | fax: 218-237-3377



\$230,000
 MLS 6825484 Commercial
 26468 US 71
 Park Rapids MN 56470



website: www.AffinityRealEstate.com | email: info@affinityrealestate.com | office: 218-237-3333 | fax: 218-237-3377

Affinity
REAL ESTATE INC

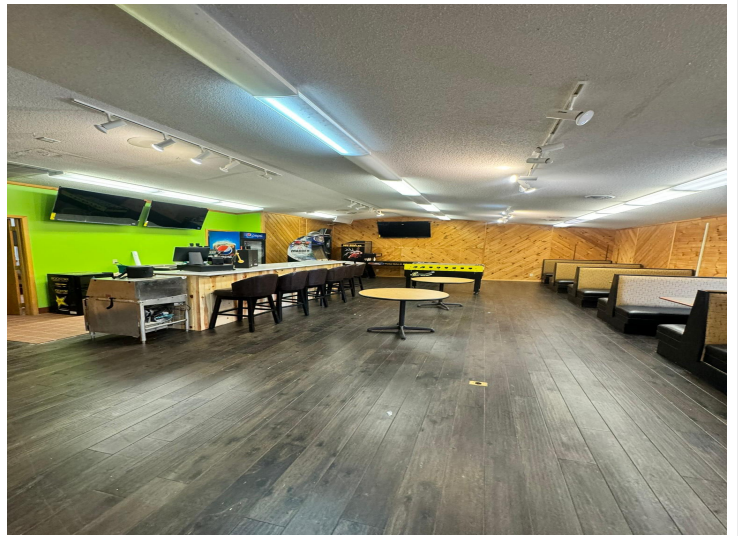
\$230,000
MLS 6825484 Commercial
26468 US 71
Park Rapids MN 56470



website: www.AffinityRealEstate.com | email: info@affinityrealestate.com | office: 218-237-3333 | fax: 218-237-3377



\$230,000
 MLS 6825484 Commercial
 26468 US 71
 Park Rapids MN 56470



website: www.AffinityRealEstate.com | email: info@affinityrealestate.com | office: 218-237-3333 | fax: 218-237-3377

Affinity
REAL ESTATE INC

\$230,000
MLS 6825484 Commercial
26468 US 71
Park Rapids MN 56470



website: www.AffinityRealEstate.com | email: info@affinityrealestate.com | office: 218-237-3333 | fax: 218-237-3377



\$230,000
 MLS 6825484 Commercial
 26468 US 71
 Park Rapids MN 56470



website: www.AffinityRealEstate.com | email: info@affinityrealestate.com | office: 218-237-3333 | fax: 218-237-3377

Affinity
REAL ESTATE INC

\$230,000
MLS 6825484 Commercial
26468 US 71
Park Rapids MN 56470



website: www.AffinityRealEstate.com | email: info@affinityrealestate.com | office: 218-237-3333 | fax: 218-237-3377



\$230,000
 MLS 6825484 Commercial
 26468 US 71
 Park Rapids MN 56470



website: www.AffinityRealEstate.com | email: info@affinityrealestate.com | office: 218-237-3333 | fax: 218-237-3377



\$230,000
MLS 6825484 Commercial
26468 US 71
Park Rapids MN 56470