



MLS 6825558 Land

\$175,000

2.16 Acres

Raw Land

3241 Boreal Lane
Hackensack MN 56452

Status: Active

Description:

IXL Lake near Longville with 150ft of hard bottom lakeshore on 2 plus acre lot that has been cleared making for a nice area to build that home/cabin or continue to use for camping and recreational pleasure. This lot has power & shallow well already in place. There are 2 campers included in the sale including a 2015 27ft Jayco White Hawk and a 2005 32ft Forest River. Come check out this lot in the heart of the lakes area today.

Additional Details:

Lot Acres	2.16
Lot Dimensions	150x638x160x600
School District	734
Taxes	\$1,066
Taxes with Assessments	\$1,132
Tax Year	2025

Additional Features:

Driving Directions:

From Longville Go south on State 84 6.3 miles, turn right on HWY 11 go 1.6 mile turn left on to 6th AVE NW go .1 miles turn on 32nd Str NW go .4 miles turn on Boreal Trail NW to Sign on left



Listed By:
Rusty's Up North Realty

Affinity Real Estate Inc. participates in the Regional Multiple Listing Service of Minnesota, Inc Broker Reciprocity (sm) program, allowing us to display other broker's listings on our website. All properties are subject to prior sale, change or withdrawal.



Call Affinity Real Estate

218-237-3333

info@affinityrealestate.com



Affinity Real Estate - 600 Park Avenue South - Park Rapids MN 56470



website: www.AffinityRealEstate.com | email: info@affinityrealestate.com | office: 218-237-3333 | fax: 218-237-3377



\$175,000
MLS 6825558 Land
3241 Boreal Lane
Hackensack MN 56452



website: www.AffinityRealEstate.com | email: info@affinityrealestate.com | office: 218-237-3333 | fax: 218-237-3377



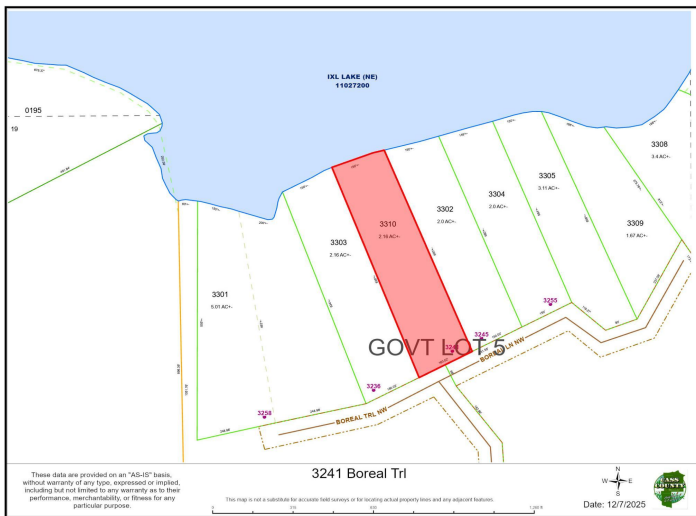
\$175,000
MLS 6825558 Land
3241 Boreal Lane
Hackensack MN 56452



website: www.AffinityRealEstate.com | email: info@affinityrealestate.com | office: 218-237-3333 | fax: 218-237-3377



\$175,000
 MLS 6825558 Land
 3241 Boreal Lane
 Hackensack MN 56452



website: www.AffinityRealEstate.com | email: info@affinityrealestate.com | office: 218-237-3333 | fax: 218-237-3377



\$175,000
 MLS 6825558 Land
 3241 Boreal Lane
 Hackensack MN 56452