



MLS 6825696 Residential

\$264,900

1,144 sq ft
3 bedrooms
2 baths

412 Russ Parta Drive
New York Mills MN 56567

Status: Active

Description:

Step inside this brand new 3 bedroom 2 bath home where modern style meets everyday comfort. The light-filled main living area flows into a beautiful kitchen complete with new appliances, pantry and clean contemporary design. All living spaces-bedrooms, laundry and baths- are conveniently located in this one level living home. You'll appreciate the insulated attached garage for Minnesota winters, plus a handy crawl space that adds storage without sacrificing square footage. With thoughtful details, quality finishes and a fresh modern look, this home is ready and waiting for you. Take advantage of the 5 year/\$10,000 property tax benefit that comes with this property! That's a huge savings on your monthly payment!

Additional Details:

Year Built	2025
Lot Acres	0.395
Lot Dimensions	.395
Garage Stalls	2
School District	1962
Taxes	\$52
Taxes with Assessments	\$52
Tax Year	2025

Additional Features:

Basement: Block, Crawl Space, Storage Space **Fuel:** Array **Garage:** 2 **Heat:** Forced Air **Sewer:** City Sewer/Connected **Water:** City Water/Connected **Air Conditioning:** Central Air

Driving Directions:

North of NYM on Hwy 67 to Highway 56. Right onto Highway 56, then right onto John Mark Avenue to Russ Parta Drive, Left onto Russ Parta Drive



Listed By:
Centennial Realty

Affinity Real Estate Inc. participates in the Regional Multiple Listing Service of Minnesota, Inc Broker Reciprocity (sm) program, allowing us to display other broker's listings on our website. All properties are subject to prior sale, change or withdrawal.



Call Affinity Real Estate

218-237-3333

info@affinityrealestate.com



Affinity Real Estate - 600 Park Avenue South - Park Rapids MN 56470



website: www.AffinityRealEstate.com | email: info@affinityrealestate.com | office: 218-237-3333 | fax: 218-237-3377



\$264,900
 MLS 6825696 Residential
 412 Russ Parta Drive
 New York Mills MN 56567



website: www.AffinityRealEstate.com | email: info@affinityrealestate.com | office: 218-237-3333 | fax: 218-237-3377



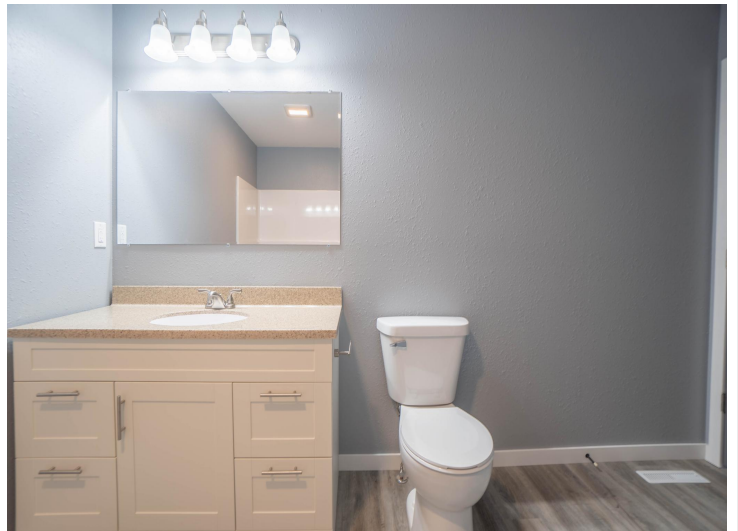
\$264,900
 MLS 6825696 Residential
 412 Russ Parta Drive
 New York Mills MN 56567



website: www.AffinityRealEstate.com | email: info@affinityrealestate.com | office: 218-237-3333 | fax: 218-237-3377



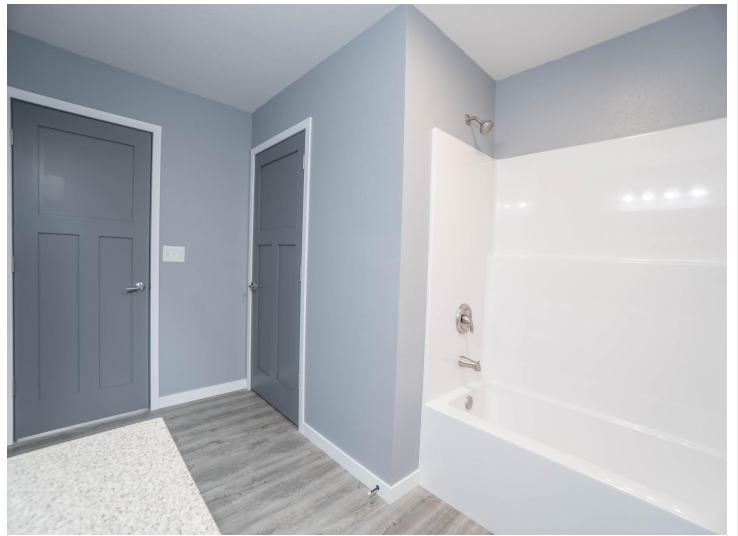
\$264,900
 MLS 6825696 Residential
 412 Russ Parta Drive
 New York Mills MN 56567



website: www.AffinityRealEstate.com | email: info@affinityrealestate.com | office: 218-237-3333 | fax: 218-237-3377



\$264,900
 MLS 6825696 Residential
 412 Russ Parta Drive
 New York Mills MN 56567



website: www.AffinityRealEstate.com | email: info@affinityrealestate.com | office: 218-237-3333 | fax: 218-237-3377



\$264,900
MLS 6825696 Residential
412 Russ Parta Drive
New York Mills MN 56567



website: www.AffinityRealEstate.com | email: info@affinityrealestate.com | office: 218-237-3333 | fax:218-237-3377



\$264,900
MLS 6825696 Residential
412 Russ Parta Drive
New York Mills MN 56567