



MLS 6825928 Residential

\$330,000

3,274 sq ft
6 bedrooms
3 baths

35515 State Highway 87
Frazee MN 56544

Status: Active

Description:

Incredible 14-Acre Property Near Frazee – A Rare Find!

This one-of-a-kind property truly has it all! Just a few miles east of Frazee, you'll find a 6-bedroom, 3-bath log home with 3,790 total square feet, including a partially finished full basement – offering ample space for comfortable living and expansion.

Property Highlights:

Log Home with 6 beds / 3 baths

Attached Great Room – perfect for entertaining

Greenhouse for year-round gardening

28x90 Heated Shop

Freezer Storage Shed

40x80 Pole Shed with Lean-to

26x50 Event Barn – ideal for gatherings, or additional income

14 Beautiful Acres of mixed-use land

Pond, Artisan Well, and established Trails

Deer Stand – Excellent Hunting Opportunities


Perfect setup for a Hobby Farm, recreation, or a private retreat

You simply won't find another property offering this much, this many buildings, and this kind of versatility at this price point.

Whether you're looking for a serene homestead, a place to start your hobby farm, or a recreational paradise, this property checks all the boxes!

Additional Details:

Year Built	1979
Lot Acres	14
Lot Dimensions	14
Garage Stalls	3
School District	1106
Taxes	\$1,920

1  ents \$1,920
1 Listed By: The Real Estate Company of Detroit Lakes

Affinity Real Estate Inc. participates in the Regional Multiple Listing Service of Minnesota, Inc Broker Reciprocity (sm) program, allowing
Additional Features:
Basement, Block Party Listings, Camp, Pond, Walk, Property, Air
Water, Attic, Well, Air Conditioning, Window Unit(s)



Call Affinity Real Estate

218-237-3333

info@affinityrealestate.com

   Drainage Field

Affinity Real Estate - 600 Park Avenue South - Park Rapids MN 56470

Driving Directions:

©2025 Acme Webwerks - Affinity Real Estate Inc - Licensed in Minnesota - Brochure v.2019.05.23.2 - 216.73.216.189 - 2025.12.11 16:27:53
Follow hwy 87 out of Frazee two miles on the right



website: www.AffinityRealEstate.com | email: info@affinityrealestate.com | office: 218-237-3333 | fax: 218-237-3377

Affinity
REAL ESTATE INC

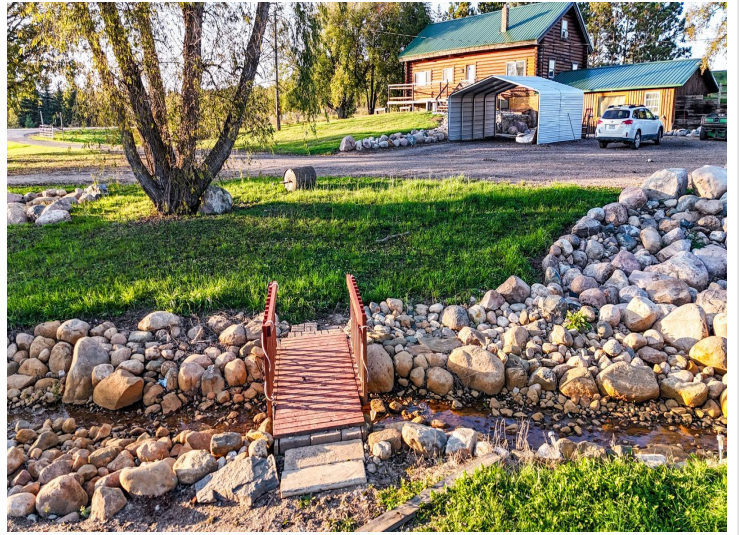
\$330,000
MLS 6825928 Residential
35515 State Highway 87
Frazee MN 56544



website: www.AffinityRealEstate.com | email: info@affinityrealestate.com | office: 218-237-3333 | fax: 218-237-3377

Affinity
REAL ESTATE INC

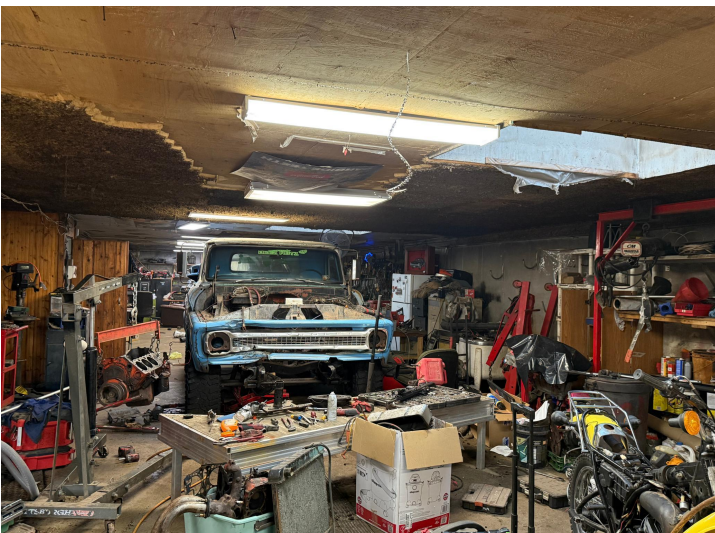
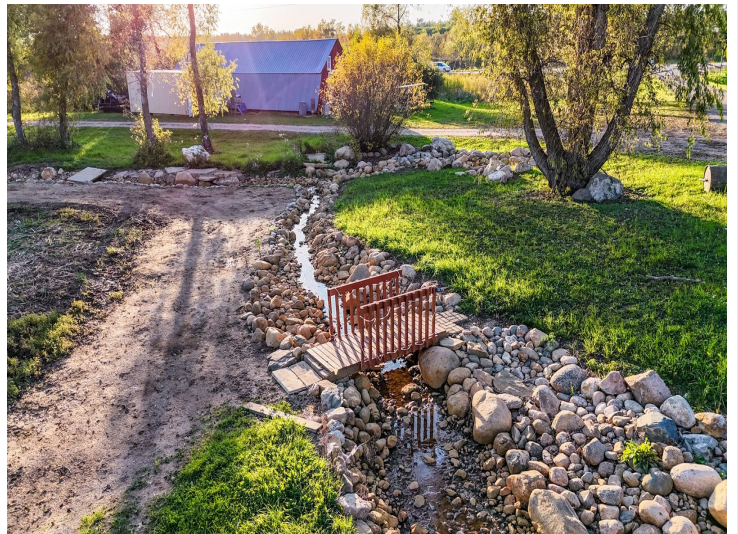
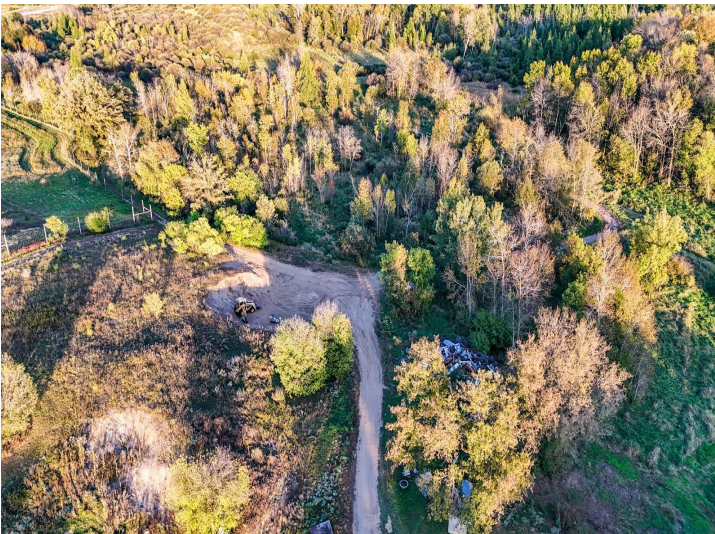
\$330,000
MLS 6825928 Residential
35515 State Highway 87
Frazee MN 56544



website: www.AffinityRealEstate.com | email: info@affinityrealestate.com | office: 218-237-3333 | fax: 218-237-3377

Affinity
REAL ESTATE INC

\$330,000
MLS 6825928 Residential
35515 State Highway 87
Frazee MN 56544



website: www.AffinityRealEstate.com | email: info@affinityrealestate.com | office: 218-237-3333 | fax: 218-237-3377

Affinity
REAL ESTATE INC

\$330,000
MLS 6825928 Residential
35515 State Highway 87
Frazee MN 56544



website: www.AffinityRealEstate.com | email: info@affinityrealestate.com | office: 218-237-3333 | fax: 218-237-3377



\$330,000
MLS 6825928 Residential
35515 State Highway 87
Frazee MN 56544