



MLS 6826007 Residential

**\$270,000**

1,794 sq ft  
3 bedrooms  
2 baths

1009 2nd Avenue  
Staples MN 56479

Status: Active

**Description:**

Welcome to this brand-new 3 bedroom, 2 bath home in the heart of Staples, offering modern comfort and small-town charm with an open floor plan that includes a spacious kitchen with stainless steel appliances, a center island, and an eat-in dining area flowing into a large living room. The main level features a generous primary bedroom with an ensuite bath and walk in closet, a comfortable office that could be converted into a walk-in pantry, main-floor laundry, and an inviting open foyer. Upstairs, enjoy a cozy second living area along with two additional bedrooms with walk in closets and a full bathroom. Conveniently located in Staples and close to local amenities, this beautiful new build is just 7 miles from Motley and 20 minutes from Baxter...move in ready and waiting for you to call it home!

**Additional Details:**

Year Built	2025
Lot Acres	0.107
Lot Dimensions	46x100
School District	1062
Taxes	\$726
Taxes with Assessments	\$726
Tax Year	2025

**Additional Features:**

**Basement:** Concrete **Fuel:** Array **Heat:** Forced Air **Sewer:** City Sewer/Connected **Water:** City Water/Connected **Air Conditioning:** Central Air

**Driving Directions:**

From US Hwy 10 in Staples turn north on  
11th St NE, go 1 Block to left turn on 2nd Ave NE. See sign.



Listed By:  
Kurilla Real Estate LTD

Affinity Real Estate Inc. participates in the Regional Multiple Listing Service of Minnesota, Inc Broker Reciprocity (sm) program, allowing us to display other broker's listings on our website. All properties are subject to prior sale, change or withdrawal.



**Call Affinity Real Estate**

**218-237-3333**

**info@affinityrealestate.com**



**Affinity Real Estate - 600 Park Avenue South - Park Rapids MN 56470**





website: [www.AffinityRealEstate.com](http://www.AffinityRealEstate.com) | email: [info@affinityrealestate.com](mailto:info@affinityrealestate.com) | office: 218-237-3333 | fax: 218-237-3377

**Affinity**  
REAL ESTATE INC

**\$270,000**  
MLS 6826007 Residential  
1009 2nd Avenue  
Staples MN 56479





website: [www.AffinityRealEstate.com](http://www.AffinityRealEstate.com) | email: [info@affinityrealestate.com](mailto:info@affinityrealestate.com) | office: 218-237-3333 | fax: 218-237-3377

**Affinity**  
REAL ESTATE INC

**\$270,000**  
MLS 6826007 Residential  
1009 2nd Avenue  
Staples MN 56479





website: [www.AffinityRealEstate.com](http://www.AffinityRealEstate.com) | email: [info@affinityrealestate.com](mailto:info@affinityrealestate.com) | office: 218-237-3333 | fax: 218-237-3377

**Affinity**  
REAL ESTATE INC

**\$270,000**  
MLS 6826007 Residential  
1009 2nd Avenue  
Staples MN 56479





website: [www.AffinityRealEstate.com](http://www.AffinityRealEstate.com) | email: [info@affinityrealestate.com](mailto:info@affinityrealestate.com) | office: 218-237-3333 | fax: 218-237-3377



**\$270,000**  
MLS 6826007 Residential  
1009 2nd Avenue  
Staples MN 56479





website: [www.AffinityRealEstate.com](http://www.AffinityRealEstate.com) | email: [info@affinityrealestate.com](mailto:info@affinityrealestate.com) | office: 218-237-3333 | fax: 218-237-3377

**Affinity**  
REAL ESTATE INC

**\$270,000**  
MLS 6826007 Residential  
1009 2nd Avenue  
Staples MN 56479



Basement 1

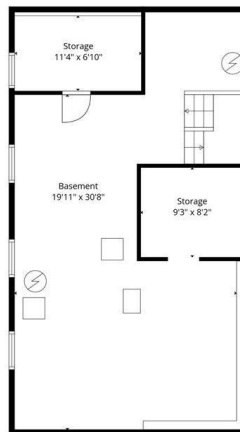


1st floor



2nd floor

FLOOR PLAN CREATED BY CURCASA APP. MEASUREMENTS DEEMED HIGHLY RELIABLE BUT NOT GUARANTEED.



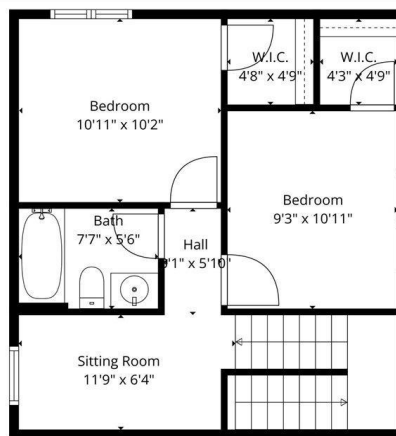
TOTAL: 1431 sq. ft.  
BELOW GRADE: 0 sq. ft., 1st floor: 965 sq. ft., 2nd floor: 466 sq. ft.  
EXCLUDED AREAS: STORAGE: 173 sq. ft., BASEMENT: 611 sq. ft., WALLS: 173 sq. ft.

See Additional Documents for Aggregators. Actual Measurements May Vary.



TOTAL: 1431 sq. ft.  
BELOW GRADE: 0 sq. ft., 1st floor: 965 sq. ft., 2nd floor: 466 sq. ft.  
EXCLUDED AREAS: STORAGE: 173 sq. ft., BASEMENT: 611 sq. ft., WALLS: 173 sq. ft.

See Additional Documents for Aggregators. Actual Measurements May Vary.



TOTAL: 1431 sq. ft.  
BELOW GRADE: 0 sq. ft., 1st floor: 965 sq. ft., 2nd floor: 466 sq. ft.  
EXCLUDED AREAS: STORAGE: 173 sq. ft., BASEMENT: 611 sq. ft., WALLS: 173 sq. ft.

See Additional Documents for Aggregators. Actual Measurements May Vary.

website: [www.AffinityRealEstate.com](http://www.AffinityRealEstate.com) | email: [info@affinityrealestate.com](mailto:info@affinityrealestate.com) | office: 218-237-3333 | fax: 218-237-3377



**\$270,000**  
MLS 6826007 Residential  
1009 2nd Avenue  
Staples MN 56479