



MLS 6826226 Residential

\$299,900

300 sq ft
1 bedrooms
1 baths

3717 Sebie Lake Road
Fort Ripley MN 56449

Status: Active

Description:

Discover this exceptional seasonal cabin situated on a stunning, well-manicured 2.33-acre parcel overlooking Sebie Lake. Enjoy breathtaking lake views and excellent fishing right from your own dock. The cabin offers a warm and inviting atmosphere with a cozy kitchen, comfortable living area, and charming stone fireplace. A detached garage includes a bunkroom equipped with two queen-size beds, electricity, and air conditioning—perfect for hosting guests. A prepared build site sits on the upper portion of the property, offering an ideal location for future construction or expansion. Additional features include an outdoor shower, and a drilled well for dependable water. Surrounded by nature, this property provides a peaceful, secluded feel with nothing but the sounds of the outdoors. Also, the South Side of the lake is undeveloped, state owned land, plenty of restaurants, golf course and trails for snowmobiling and ATV enjoyment all nearby. Don't miss this rare opportunity to own a truly special getaway on Sebie Lake.

Additional Details:

| | |
|------------------------|-----------------|
| Year Built | 1950 |
| Lot Acres | 2.34 |
| Lot Dimensions | 324x398x198x406 |
| Garage Stalls | 1 |
| School District | 896 |
| Taxes | \$1,550 |
| Taxes with Assessments | \$1,550 |
| Tax Year | 2025 |

Additional Features:

Fuel: Array **Heat:** Fireplace(s)

Driving Directions:

Hwy. 10 North of Little Falls 12 miles to East on #49 (263rd Street) 1 mile to North on 165th Avenue 1.5 miles to Left on Sebie Lake Road to sign on Left.



Listed By:
Premier Real Estate Services

Affinity Real Estate Inc. participates in the Regional Multiple Listing Service of Minnesota, Inc Broker Reciprocity (sm) program, allowing us to display other broker's listings on our website. All properties are subject to prior sale, change or withdrawal.



Call Affinity Real Estate

218-237-3333

info@affinityrealestate.com



Affinity Real Estate - 600 Park Avenue South - Park Rapids MN 56470



website: www.AffinityRealEstate.com | email: info@affinityrealestate.com | office: 218-237-3333 | fax: 218-237-3377

Affinity
REAL ESTATE INC

\$299,900

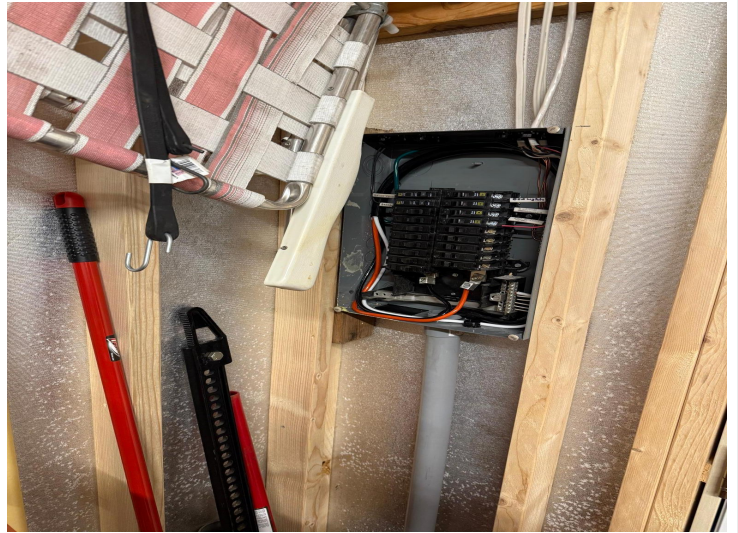
MLS 6826226 Residential
3717 Sebie Lake Road
Fort Ripley MN 56449



website: www.AffinityRealEstate.com | email: info@affinityrealestate.com | office: 218-237-3333 | fax: 218-237-3377

Affinity
REAL ESTATE INC

\$299,900
MLS 6826226 Residential
3717 Sebie Lake Road
Fort Ripley MN 56449



website: www.AffinityRealEstate.com | email: info@affinityrealestate.com | office: 218-237-3333 | fax: 218-237-3377



\$299,900
 MLS 6826226 Residential
 3717 Sebie Lake Road
 Fort Ripley MN 56449

website: www.AffinityRealEstate.com | email: info@affinityrealestate.com | office: 218-237-3333 | fax: 218-237-3377



\$299,900

MLS 6826226 Residential
3717 Sebie Lake Road
Fort Ripley MN 56449

website: www.AffinityRealEstate.com | email: info@affinityrealestate.com | office: 218-237-3333 | fax: 218-237-3377



\$299,900

MLS 6826226 Residential
3717 Sebie Lake Road
Fort Ripley MN 56449

website: www.AffinityRealEstate.com | email: info@affinityrealestate.com | office: 218-237-3333 | fax:218-237-3377



\$299,900

MLS 6826226 Residential
3717 Sebie Lake Road
Fort Ripley MN 56449