



MLS 6826282 Residential

**\$364,900**

1,696 sq ft  
3 bedrooms  
2 baths

1420 Campus Drive  
Fergus Falls MN 56537

Status: Active

**Description:**

Discover effortless living at Campus View Estates, a premier townhome community in Fergus Falls offering 3 bedroom, 2 bathroom homes designed for comfort and convenience. Enjoy single level living with an open floor plan, vaulted ceilings, and a spacious kitchen featuring a center island and pantry. The primary suite is a private retreat with a generously sized bedroom, ensuite bath, and walk-through closet. The covered concrete patio is perfect for enjoying sunny days. Additional highlights include central air, a heated and insulated attached 2-stall garage, and low-maintenance vinyl siding. With lawn care and snow removal provided by the association, you'll have more time for what matters most. Act now to choose your finishes and take advantage of TIF financing, which reduces special assessments for qualified buyers.

**Additional Details:**

Year Built	2025
Lot Acres	0.23
Lot Dimensions	Irregular
Garage Stalls	2
School District	1944
Taxes	\$204
Taxes with Assessments	\$226
Tax Year	2025

**Additional Features:**

**Basement:** None **Fuel:** Array **Garage:** 2 **Heat:** Forced Air **Sewer:** City Sewer/Connected **Water:** City Water/Connected **Air Conditioning:** Central Air

**Driving Directions:**

Head N on Union Ave and then E onto Campus Dr to the property.



Listed By:  
Keller Williams Realty Professionals

Affinity Real Estate Inc. participates in the Regional Multiple Listing Service of Minnesota, Inc Broker Reciprocity (sm) program, allowing us to display other broker's listings on our website. All properties are subject to prior sale, change or withdrawal.



**Call Affinity Real Estate**

**218-237-3333**

**info@affinityrealestate.com**



**Affinity Real Estate - 600 Park Avenue South - Park Rapids MN 56470**

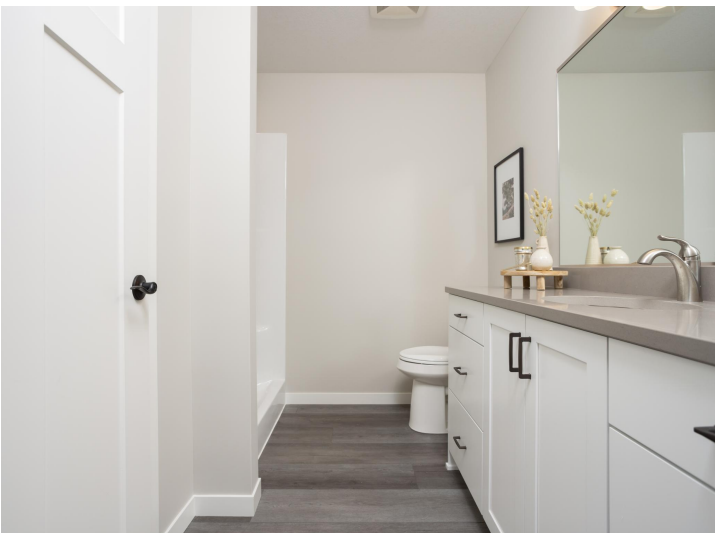


website: [www.AffinityRealEstate.com](http://www.AffinityRealEstate.com) | email: [info@affinityrealestate.com](mailto:info@affinityrealestate.com) | office: 218-237-3333 | fax: 218-237-3377



**\$364,900**  
 MLS 6826282 Residential  
 1420 Campus Drive  
 Fergus Falls MN 56537

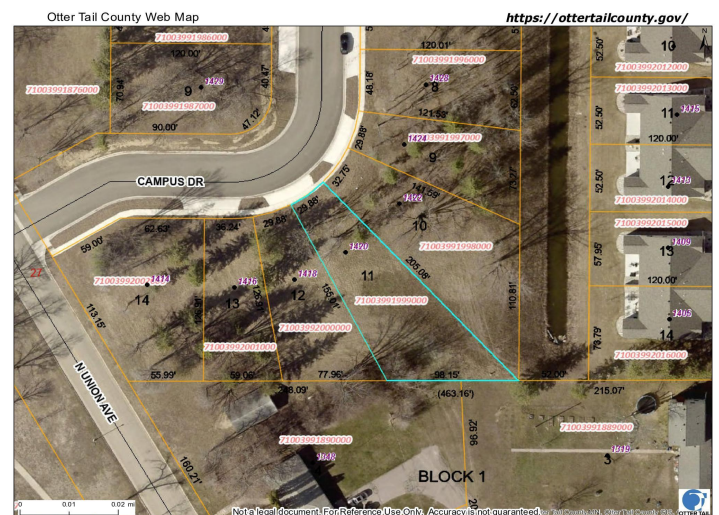
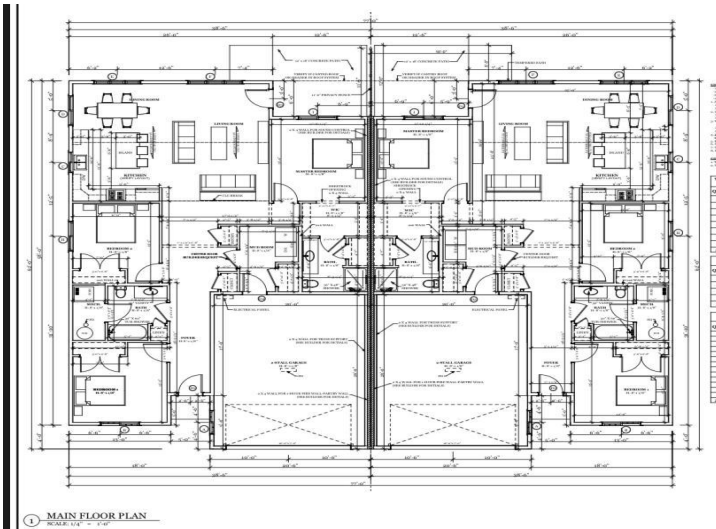
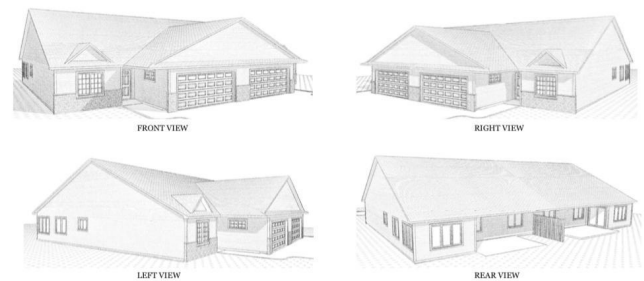




website: [www.AffinityRealEstate.com](http://www.AffinityRealEstate.com) | email: [info@affinityrealestate.com](mailto:info@affinityrealestate.com) | office: 218-237-3333 | fax: 218-237-3377

**Affinity**  
REAL ESTATE INC

**\$364,900**  
MLS 6826282 Residential  
1420 Campus Drive  
Fergus Falls MN 56537



website: [www.AffinityRealEstate.com](http://www.AffinityRealEstate.com) | email: [info@affinityrealestate.com](mailto:info@affinityrealestate.com) | office: 218-237-3333 | fax: 218-237-3377



**\$364,900**  
MLS 6826282 Residential  
1420 Campus Drive  
Fergus Falls MN 56537