

MLS 6826364 Land

**\$55,000**

1.39 Acres

Raw Land

TBD Washington Avenue  
Bemidji MN 56601

Status: Active

#### Description:

Very nice residential building lot just south of Bemidji on the corner of Washington Avenue South and Carr Lake Road SE. This corner lot would have great access and visibility. May make a good home-based business location or just a very nice spot for your new home.

#### Additional Details:

Lot Acres	1.39
Lot Dimensions	180x300
School District	1386
Taxes	\$260
Taxes with Assessments	\$260
Tax Year	2025

#### Additional Features:

#### Driving Directions:

South on Washington Ave to Carr Lake Rd SE. Lot on the corner of intersection.



Listed By:  
Century 21 Dickinson

Affinity Real Estate Inc. participates in the Regional Multiple Listing Service of Minnesota, Inc Broker Reciprocity (sm) program, allowing us to display other broker's listings on our website. All properties are subject to prior sale, change or withdrawal.



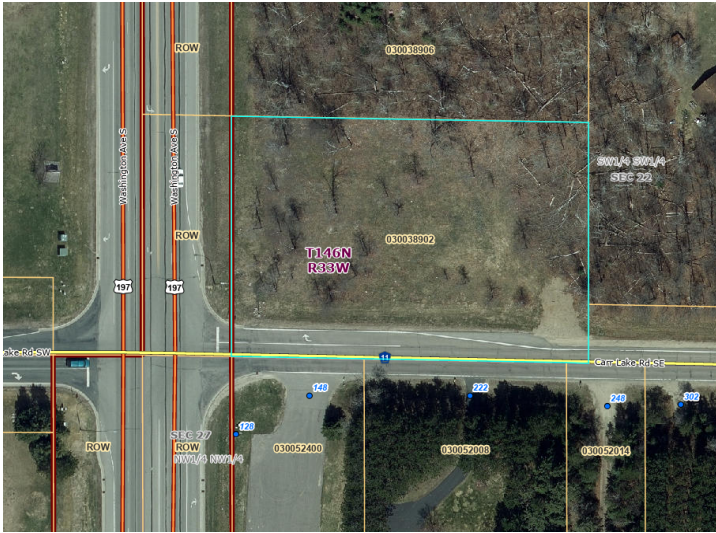
Call Affinity Real Estate

**218-237-3333**

[info@affinityrealestate.com](mailto:info@affinityrealestate.com)



Affinity Real Estate - 600 Park Avenue South - Park Rapids MN 56470



website: [www.AffinityRealEstate.com](http://www.AffinityRealEstate.com) | email: [info@affinityrealestate.com](mailto:info@affinityrealestate.com) | office: 218-237-3333 | fax: 218-237-3377



**\$55,000**  
 MLS 6826364 Land  
 TBD Washington Avenue  
 Bemidji MN 56601