



MLS 6826441 Land

**\$126,000**

15 Acres  
Raw Land

TBD 190th Street  
Pelican Rapids MN 56572

Status: Active

#### Description:

This 15± acre property is located just outside Pelican Rapids in Otter Tail County. The land sits at the end of a quiet dead end road, which limits through traffic and supports a more private setting. The terrain is primarily flat, offering a simple layout for development, farming or general outdoor use. Its open ground allows a new owner to shape the property according to individual plans while remaining within all applicable zoning and land use regulations.

The tract functions as a true blank canvas. The absence of covenants or private restrictions provides flexibility in planning future use. A buyer can consider a new homestead, a small scale agricultural operation, or a recreational retreat. Because the parcel is open, the work required to prepare a building site is minimal compared to heavily wooded or uneven terrain. Whether someone wants room for gardens, small livestock, storage buildings, or general outdoor space, the layout supports a wide range of land use concepts.

- \*Approximately 15 acres of mostly flat open ground
- \*Located on a dead end road just outside Pelican Rapids
- \*No covenants or private restrictions on land use
- \*Suitable for a homesite, hobby farm, or general recreation
- \*Open terrain reduces site prep for building or farming
- \*Near Pelican Rapids for daily services and amenities
- \*Space for gardens, small livestock, or outbuildings

#### Additional Details:

Lot Acres 15

Lot Dimensions 15±

Listed By 1952  
Whitetail Properties Real Estate

Affinity Real Estate Inc. participates in the Regional Multiple Listing Service of Minnesota, Inc Broker Reciprocity (sm) program, allowing us to display other broker's listings on our website. All properties are subject to prior sale, change or withdrawal.

#### Additional Features:



Call Affinity Real Estate

**218-237-3333**

[info@affinityrealestate.com](mailto:info@affinityrealestate.com)



Affinity Real Estate - 600 Park Avenue South - Park Rapids MN 56470

#### Driving Directions:

From Pelican Rapids, take Old Farm Rd SW to 190th St



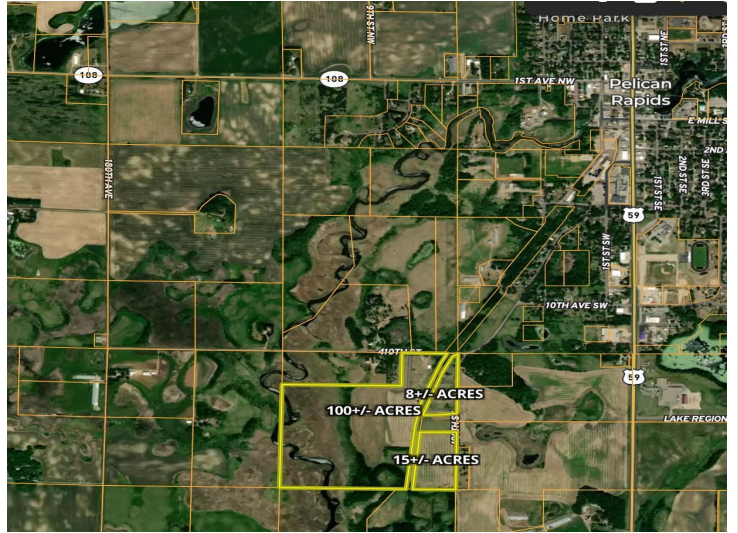
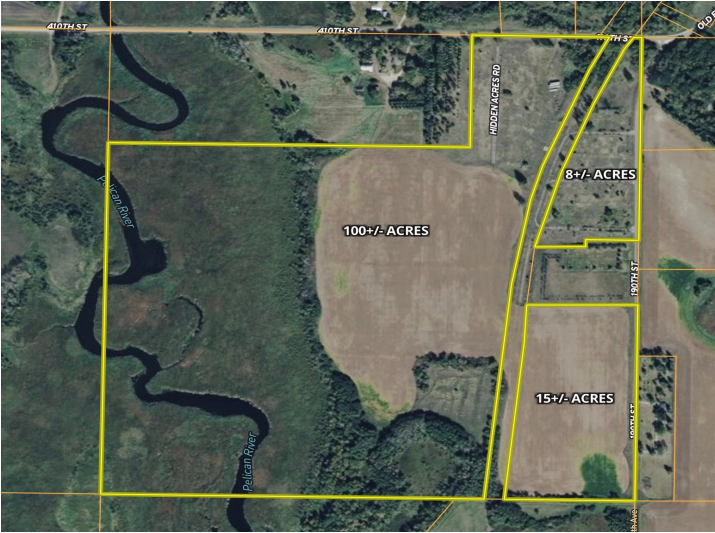


website: [www.AffinityRealEstate.com](http://www.AffinityRealEstate.com) | email: [info@affinityrealestate.com](mailto:info@affinityrealestate.com) | office: 218-237-3333 | fax: 218-237-3377



**\$126,000**  
 MLS 6826441 Land  
 TBD 190th Street  
 Pelican Rapids MN 56572





website: [www.AffinityRealEstate.com](http://www.AffinityRealEstate.com) | email: [info@affinityrealestate.com](mailto:info@affinityrealestate.com) | office: 218-237-3333 | fax:218-237-3377



**\$126,000**  
MLS 6826441 Land  
TBD 190th Street  
Pelican Rapids MN 56572