



MLS 6826704 Residential

\$679,000

2,426 sq ft
4 bedrooms
3 baths

8038 Lost Lake Road
Nisswa MN 56468

Status: Active

Description:

Spider Lake Preserve on the Gull Lake Chain has 3 lots remaining. Think now for Gull Lake enjoyment in 2026!

Welcome to the Madison, a beautiful new construction home designed for modern living. The open floor plan flows effortlessly with stylish engineered wood flooring, creating a warm and welcoming space for both everyday life and entertaining. Enjoy the ease of main floor living and relax on the inviting front porch that feels like home from the moment you arrive. The spacious 3-stall garage provides plenty of storage, while the walkout basement offers a large family room, 2 additional bedroom and a bathroom.

On top of this new lake home plan, three other walkout plans may be considered. This home is currently viewable in another community, call for details. This community is a small & private single-family lake home community in the City of Lake Shore. This community is nestled amongst Lost Lake Lodge, Causeway on Gull, Bar Harbor, Zorbaz, golf courses, and so much more. It is a private community with its own dock area, lake side patio and firepit area, pickleball court, private path system and fine homes built by Thomas Allen Homes.

Additional Details:

Year Built	2026
Lot Acres	0.23
Lot Dimensions	irr
Garage Stalls	3
School District	896
Taxes	\$220
Taxes with Assessments	\$220
Tax Year	2025

Additional Features:

Fuel: Array **Heat:** Forced Air

Driving Directions:

Princeton, North on 271 to West on Cty 77 (sportsman corner) to Right on Lost Lake Rd. s. 371 South, west



Listed by
Edina Realty, Inc.



Call Affinity Real Estate

218-237-3333

info@affinityrealestate.com



Affinity Real Estate - 600 Park Avenue South - Park Rapids MN 56470

Affinity Real Estate Inc. participates in the Regional Multiple Listing Service of Minnesota, Inc Broker Reciprocity (sm) program, allowing us to display other broker's listings on our website. All properties are subject to prior sale, change or withdrawal.



website: www.AffinityRealEstate.com | email: info@affinityrealestate.com | office: 218-237-3333 | fax:218-237-3377



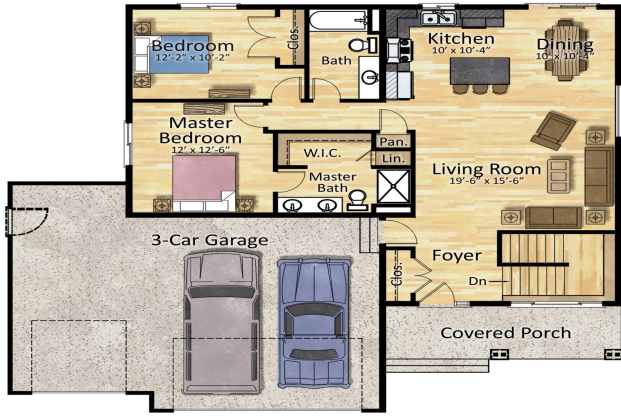
\$679,000
MLS 6826704 Residential
8038 Lost Lake Road
Nisswa MN 56468



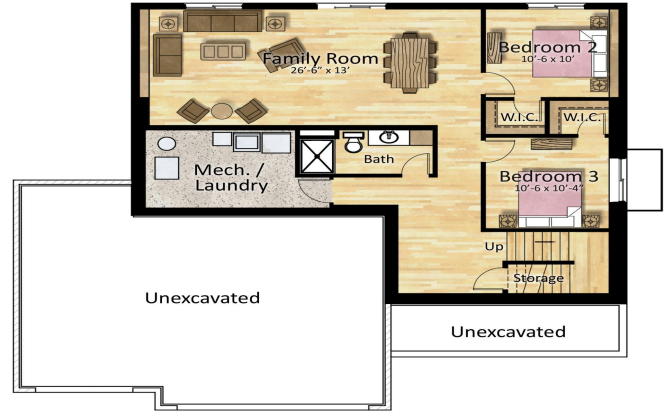
website: www.AffinityRealEstate.com | email: info@affinityrealestate.com | office: 218-237-3333 | fax: 218-237-3377

Affinity
REAL ESTATE INC

\$679,000
MLS 6826704 Residential
8038 Lost Lake Road
Nisswa MN 56468



First Floor Plan



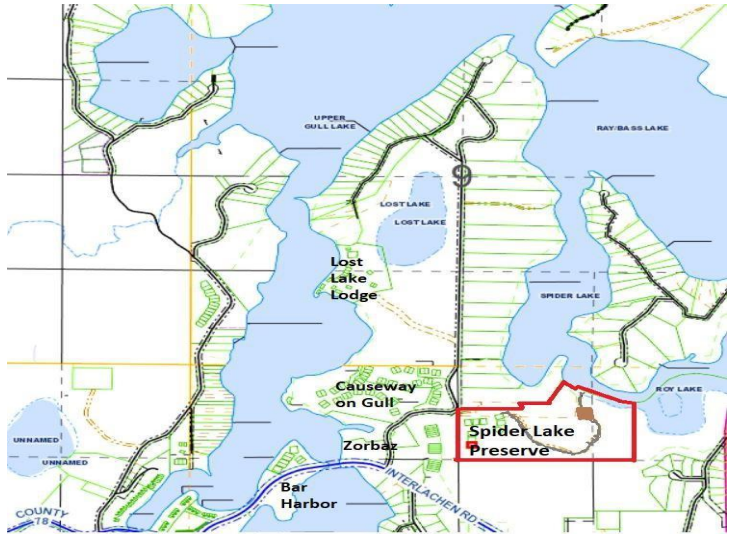
Lower Floor Plan

ResidentialRendering.com



FINISHED LOWER LEVEL INCLUDED IN LISTING PRICE.

ResidentialRendering.com



SPIDER LAKE
Preserve
ON THE GULL LAKE CHAIN

Spider Lake on Gull Lake Chain	Outdoor Fireplace
Outdoor Patio	Pickleball Court
Grill/ Cookouts	Cart to Boat or Out for Dinner
Bike in the Beautiful Surroundings	Boat Ramp on Gull Lake
Dining: Zorbaz, Lost Lake Lodge	Great Hiking & Walking



website: www.AffinityRealEstate.com | email: info@affinityrealestate.com | office: 218-237-3333 | fax: 218-237-3377



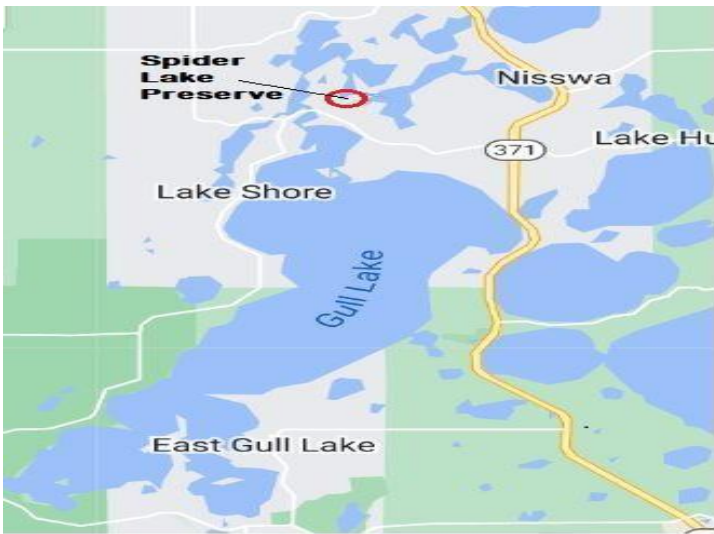
\$679,000
MLS 6826704 Residential
8038 Lost Lake Road
Nisswa MN 56468



website: www.AffinityRealEstate.com | email: info@affinityrealestate.com | office: 218-237-3333 | fax:218-237-3377



\$679,000
MLS 6826704 Residential
8038 Lost Lake Road
Nisswa MN 56468



website: www.AffinityRealEstate.com | email: info@affinityrealestate.com | office: 218-237-3333 | fax:218-237-3377



\$679,000
MLS 6826704 Residential
8038 Lost Lake Road
Nisswa MN 56468