



MLS 6826819 Land

\$2,122,000

530.5 Acres
Raw Land

TBD Co Hwy 37 Highway
Ponsford MN 56575

Status: Active

Description:

530.5 acres of premier wooded hunting and recreational land featuring half a mile of lake shore on Big Rush Lake, two private ponds, and approximately 50 tillable acres. This expansive property includes a separate 80-acre tract with easement access across parcels and electric service with 220V already on site.

Recent property updates include a 2.5-acre split to the Town of Round Lake, leaving a massive, contiguous 530.5-acre legacy tract. Experience abundant wildlife with exceptional deer, bear, and duck hunting, plus great fishing opportunities. A small hunting trailer is included as-is, along with some deer stands. No water or septic currently on property. This is a rare opportunity to own a significant portion of Becker County at a price point reflecting current local market interest.

Additional Details:

Lot Acres	530.5
Lot Dimensions	530.5
School District	23
Taxes	\$4,806
Taxes with Assessments	\$4,806
Tax Year	2025

Additional Features:

Driving Directions:

From Frazee head North on CR-29. Turn East on MN-34. Turn North on CR-37. Continue to Round Lake Town Hall (29319 Co Hwy 37, Ponsford). Property gate access are located near the town hall. See supplements for legal description and easement details.



Listed By:

Affinity Real Estate Inc. participates in the Regional Multiple Listing Service of Minnesota, Inc Broker Reciprocity (sm) program, allowing us to display other broker's listings on our website. All properties are subject to prior sale, change or withdrawal.



Call Affinity Real Estate

218-237-3333

info@affinityrealestate.com



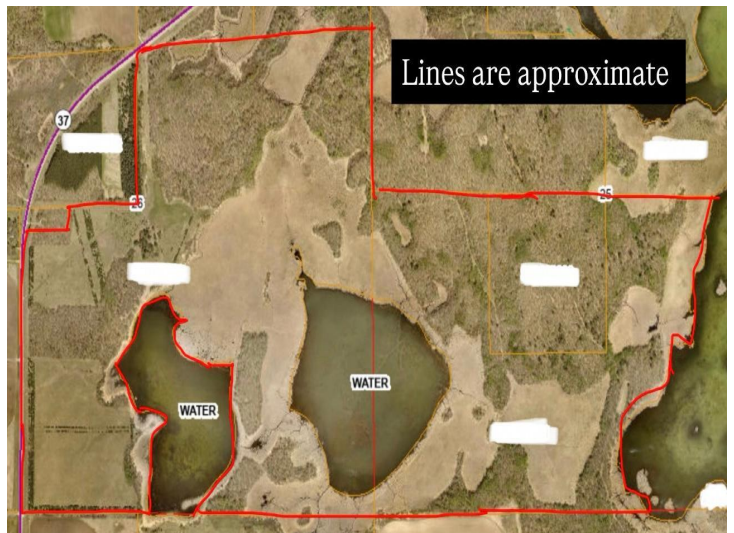
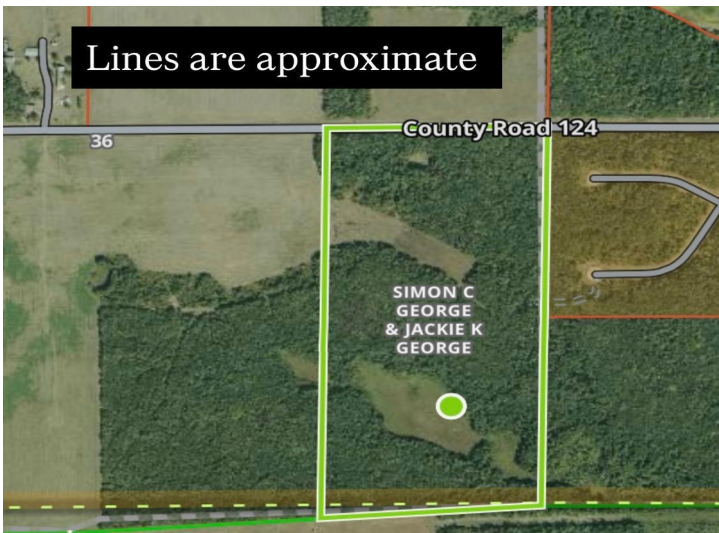
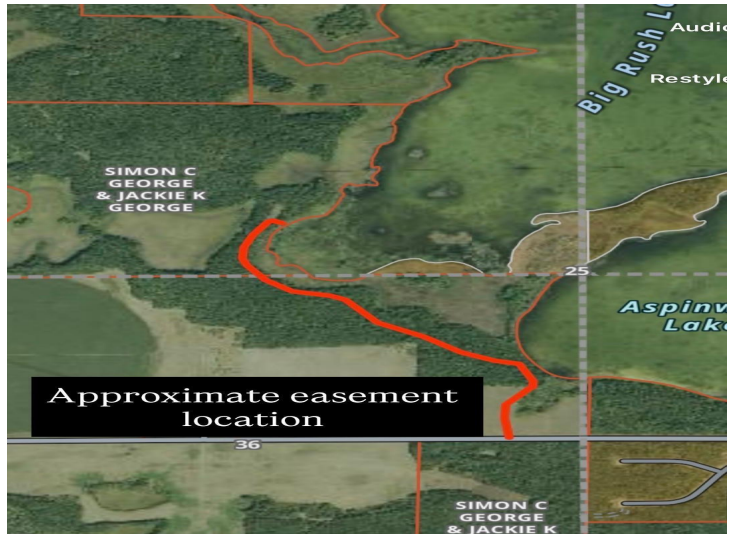
Affinity Real Estate - 600 Park Avenue South - Park Rapids MN 56470



website: www.AffinityRealEstate.com | email: info@affinityrealestate.com | office: 218-237-3333 | fax:218-237-3377



\$2,122,000
MLS 6826819 Land
TBD Co Hwy 37 Highway
Ponsford MN 56575



website: www.AffinityRealEstate.com | email: info@affinityrealestate.com | office: 218-237-3333 | fax: 218-237-3377



\$2,122,000
MLS 6826819 Land
TBD Co Hwy 37 Highway
Ponsford MN 56575