



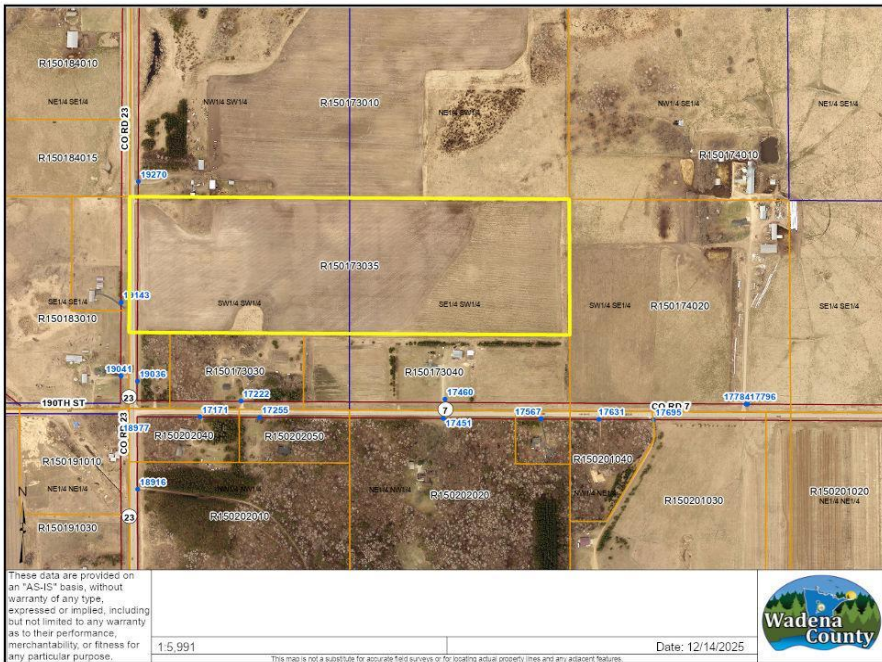
MLS 6826884 Land

**\$181,900**

51.25 Acres  
Raw Land

xxx Cnty Hwy 23  
Verndale MN 56481

Status: Pending



#### Description:

Buy now, be ready to plant in spring! 51.25 acres of almost all tillable land! Located on a tarred county road, with electricity at street edge, this parcel offers many possibilities from farm, to homestead; opportunities abound! Land has been actively farmed. Hard to come by in this area, so act fast. Call now for more info and personal tour!

#### Additional Details:

Lot Acres	51.25
Lot Dimensions	2638x843
School District	1053
Taxes	\$492
Taxes with Assessments	\$492
Tax Year	2025

#### Additional Features:

#### Driving Directions:

Cnty Hwy 23 to sign



Listed By:  
Premier Realty Group

Affinity Real Estate Inc. participates in the Regional Multiple Listing Service of Minnesota, Inc Broker Reciprocity (sm) program, allowing us to display other broker's listings on our website. All properties are subject to prior sale, change or withdrawal.



Call Affinity Real Estate

**218-237-3333**

[info@affinityrealestate.com](mailto:info@affinityrealestate.com)



Affinity Real Estate - 600 Park Avenue South - Park Rapids MN 56470

