



MLS 6826889 Residential

\$187,500

2,394 sq ft
4 bedrooms
3 baths

310 Douglas Avenue
Henning MN 56551

Status: Active

Description:

From top to bottom, this 4 bed, 2 bath century home has incredible details that truly make a house feel like a home. Dual zoned for both commercial and residential, this late Victorian style home is the ideal location for your home-based business. The current beauty salon is located in a former bedroom: keep it as its current use, or make more living space for your family! The exterior of the home has maintenance-free vinyl siding, asphalt shingles, two deck spaces for outdoor living, and a two stall detached garage. Located ideally on Douglas Ave, the City park is nearly in your backyard. Inside, you're greeted with all of the touches that make vintage homes shine -original hardwood floors, leaded glass windows, craftsman style woodwork, solid wood doors, and functional spaces flooded with natural light. The eat in kitchen has a special bonus -a full butler's pantry for extra storage and prep space. The sun porch, facing Douglas Ave, is a perfect spot for morning reflections and an evening reprieve. The oversized parlour and a full bath round out the main floor living space. All four current bedrooms are on the second level of the home, as well as a full bath with claw foot tub. One of the bedrooms even has a Juliet balcony! From top to bottom, this home has been loved and cherished - and is ready for you to write its next chapter.

Additional Details:

Year Built	1914
Lot Acres	8750
Lot Dimensions	75 x 150
Garage Stalls	2
School District	1945
Taxes	\$2,696
Taxes with Assessments	\$2,832
Tax Year	2026

Additional Features:

Fuel: Array **Heat:** Forced Air

Driving Directions:

From the intersection of stte highways 210 and 108, turn west into the town of Henning. Travel 6 blocks and the home is on the left at the corner of 3rd street.



Listed By:
Weichert, Realtors - Paulson Land Co

Affinity Real Estate Inc. participates in the Regional Multiple Listing Service of Minnesota, Inc Broker Reciprocity (sm) program, allowing us to display other broker's listings on our website. All properties are subject to prior sale, change or withdrawal.



Call Affinity Real Estate

218-237-3333

info@affinityrealestate.com



Affinity Real Estate - 600 Park Avenue South - Park Rapids MN 56470



website: www.AffinityRealEstate.com | email: info@affinityrealestate.com | office: 218-237-3333 | fax: 218-237-3377

Affinity
REAL ESTATE INC

\$187,500
MLS 6826889 Residential
310 Douglas Avenue
Henning MN 56551



website: www.AffinityRealEstate.com | email: info@affinityrealestate.com | office: 218-237-3333 | fax: 218-237-3377

Affinity
REAL ESTATE INC

\$187,500
MLS 6826889 Residential
310 Douglas Avenue
Henning MN 56551



website: www.AffinityRealEstate.com | email: info@affinityrealestate.com | office: 218-237-3333 | fax: 218-237-3377

Affinity
REAL ESTATE INC

\$187,500
MLS 6826889 Residential
310 Douglas Avenue
Henning MN 56551



website: www.AffinityRealEstate.com | email: info@affinityrealestate.com | office: 218-237-3333 | fax: 218-237-3377

Affinity
REAL ESTATE INC

\$187,500
MLS 6826889 Residential
310 Douglas Avenue
Henning MN 56551



website: www.AffinityRealEstate.com | email: info@affinityrealestate.com | office: 218-237-3333 | fax: 218-237-3377

Affinity
REAL ESTATE INC

\$187,500
MLS 6826889 Residential
310 Douglas Avenue
Henning MN 56551



website: www.AffinityRealEstate.com | email: info@affinityrealestate.com | office: 218-237-3333 | fax: 218-237-3377

Affinity
REAL ESTATE INC

\$187,500
MLS 6826889 Residential
310 Douglas Avenue
Henning MN 56551



website: www.AffinityRealEstate.com | email: info@affinityrealestate.com | office: 218-237-3333 | fax: 218-237-3377

Affinity
REAL ESTATE INC

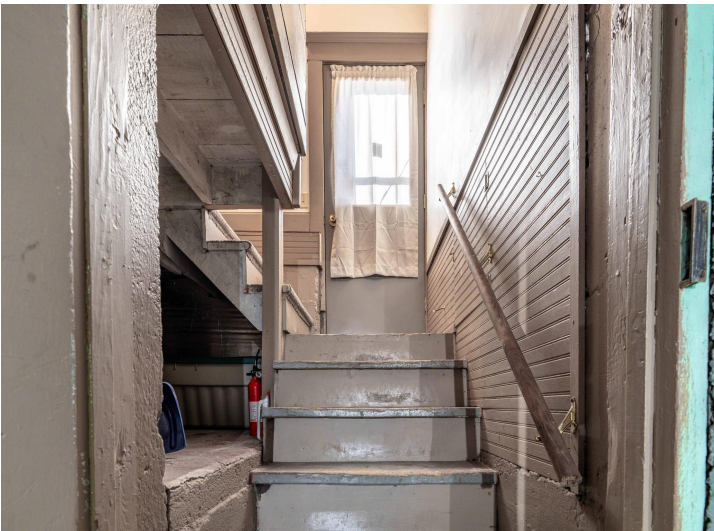
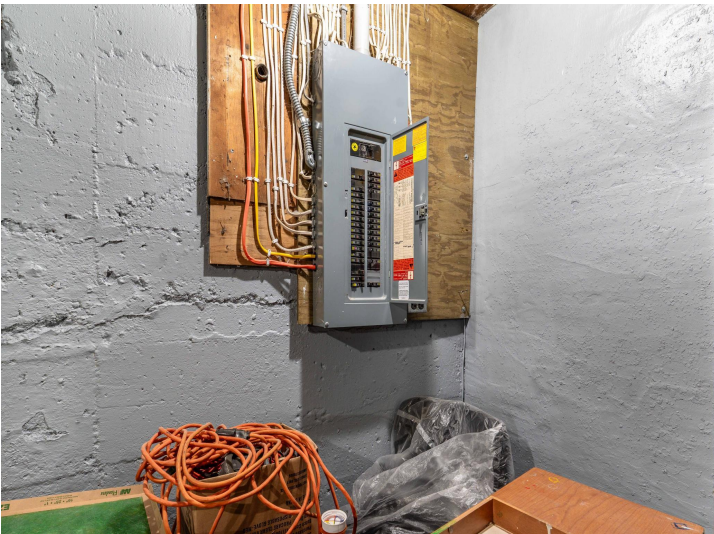
\$187,500
MLS 6826889 Residential
310 Douglas Avenue
Henning MN 56551



website: www.AffinityRealEstate.com | email: info@affinityrealestate.com | office: 218-237-3333 | fax: 218-237-3377

Affinity
REAL ESTATE INC

\$187,500
MLS 6826889 Residential
310 Douglas Avenue
Henning MN 56551



website: www.AffinityRealEstate.com | email: info@affinityrealestate.com | office: 218-237-3333 | fax: 218-237-3377



\$187,500
MLS 6826889 Residential
310 Douglas Avenue
Henning MN 56551



website: www.AffinityRealEstate.com | email: info@affinityrealestate.com | office: 218-237-3333 | fax: 218-237-3377



\$187,500
MLS 6826889 Residential
310 Douglas Avenue
Henning MN 56551