



MLS 7000105 Residential

\$599,000

2,388 sq ft
3 bedrooms
3 baths

38226 County Highway 35
Dent MN 56528

Status: Active

Description:

Dead Lake | North Shore: Enjoy exceptional lake living on this 2± acre property boasting 215 feet of hard-bottom lake frontage on desirable Dead Lake. Located on the north shore, the home sits just approximately 25 steps from the water, offering easy access and beautiful lake views.

This 1975 rambler features an updated kitchen, a warm and inviting living room with a wood-burning fireplace, and two bedrooms on the main level. An attached garage adds convenience, while the large lakeside deck and patio provide ideal spaces for entertaining or relaxing by the water.

The walk-out basement expands the living space with a second kitchen, family room, and a cozy wood stove, making it perfect for guests or extended stays.

Additional highlights include a tar driveway and a 24x24 detached garage for extra storage or recreational vehicles. With its expansive lot, generous frontage, and classic lake home charm, this property offers endless potential for year-round living or a treasured getaway.

Additional Details:

Year Built	1975
Lot Acres	1.877
Lot Dimensions	215x350
Garage Stalls	2
School District	1955
Taxes	\$3,592
Taxes with Assessments	\$3,592
Tax Year	2025

Additional Features:

Basement: Finished, Walkout **Fuel:** Array **Garage:** 2 **Heat:** Baseboard, Forced Air, Fireplace(s), Wood Stove **Sewer:** Tank with Drainage Field
Water: Drilled, Well **Air Conditioning:** Central Air

Driving Directions:

From Dent: SW on Co Hwy #35 approx 4 miles to house #38226



Listed By:
Coldwell Banker Preferred Partners

Affinity Real Estate Inc. participates in the Regional Multiple Listing Service of Minnesota, Inc Broker Reciprocity (sm) program, allowing us to display other broker's listings on our website. All properties are subject to prior sale, change or withdrawal.



Call Affinity Real Estate

218-237-3333

info@affinityrealestate.com



Affinity Real Estate - 600 Park Avenue South - Park Rapids MN 56470

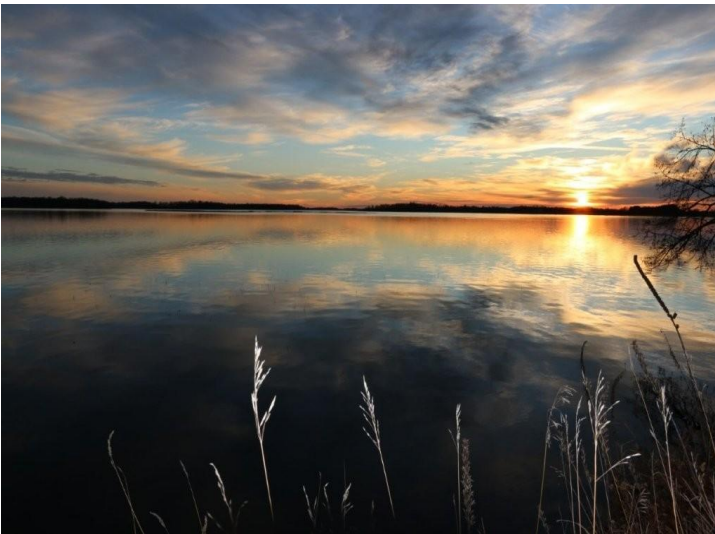


website: www.AffinityRealEstate.com | email: info@affinityrealestate.com | office: 218-237-3333 | fax: 218-237-3377

Affinity
REAL ESTATE INC

\$599,000

MLS 7000105 Residential
38226 County Highway 35
Dent MN 56528

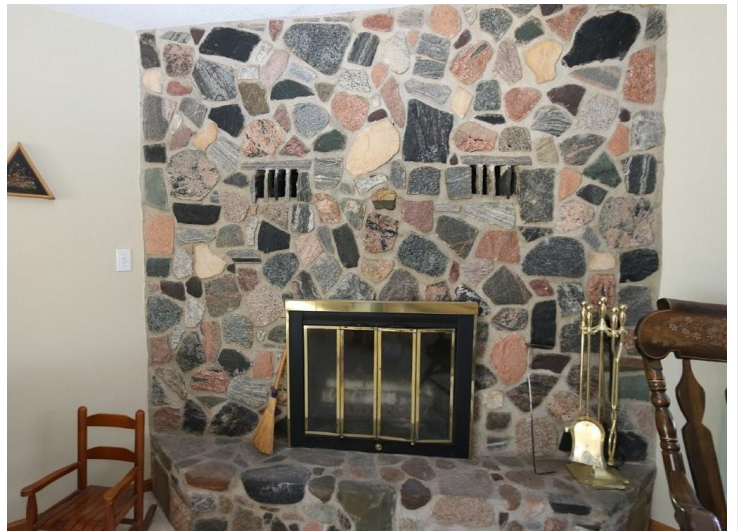


website: www.AffinityRealEstate.com | email: info@affinityrealestate.com | office: 218-237-3333 | fax: 218-237-3377

Affinity
REAL ESTATE INC

\$599,000

MLS 7000105 Residential
38226 County Highway 35
Dent MN 56528



website: www.AffinityRealEstate.com | email: info@affinityrealestate.com | office: 218-237-3333 | fax: 218-237-3377

Affinity
REAL ESTATE INC

\$599,000

MLS 7000105 Residential
38226 County Highway 35
Dent MN 56528



website: www.AffinityRealEstate.com | email: info@affinityrealestate.com | office: 218-237-3333 | fax: 218-237-3377

Affinity
REAL ESTATE INC

\$599,000
MLS 7000105 Residential
38226 County Highway 35
Dent MN 56528



website: www.AffinityRealEstate.com | email: info@affinityrealestate.com | office: 218-237-3333 | fax: 218-237-3377

Affinity
REAL ESTATE INC

\$599,000

MLS 7000105 Residential
38226 County Highway 35
Dent MN 56528



website: www.AffinityRealEstate.com | email: info@affinityrealestate.com | office: 218-237-3333 | fax: 218-237-3377

Affinity
REAL ESTATE INC

\$599,000

MLS 7000105 Residential
38226 County Highway 35
Dent MN 56528



website: www.AffinityRealEstate.com | email: info@affinityrealestate.com | office: 218-237-3333 | fax:218-237-3377



\$599,000

MLS 7000105 Residential
38226 County Highway 35
Dent MN 56528