



MLS 7000350 Land

\$75,000

2.5 Acres
Raw Land

TBD Gravdahl Drive
Pequot Lakes MN 56472

Status: Active

Description:

Discover the perfect blend of privacy and convenience with this newly created 2.5-acre parcel just minutes from everything Pequot Lakes has to offer. Surrounded by beautiful, mature woods, this lot provides the ideal setting to build your dream home with plenty of elbow room. Enjoy the peace and space of country living while staying close to town, schools, lakes, and recreation. A rare opportunity to secure wooded acreage in a prime location. Don't miss it.

Additional Details:

Year Built	1926
Lot Acres	2.5
Lot Dimensions	250x440
School District	909
Taxes	(unreported)
Taxes with Assessments	(unreported)
Tax Year	2025

Additional Features:

Driving Directions:

371 North to left (west) on County Rd 11 to left (south) on Gravdahl Dr to left (east) just past 30828 Gravdahl Drive to property on left.



Listed By:
RE/MAX Results - Nisswa

Affinity Real Estate Inc. participates in the Regional Multiple Listing Service of Minnesota, Inc Broker Reciprocity (sm) program, allowing us to display other broker's listings on our website. All properties are subject to prior sale, change or withdrawal.



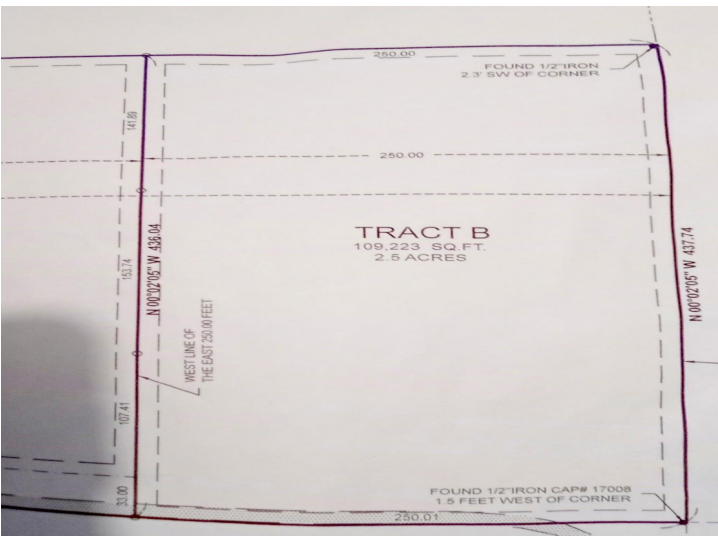
Call Affinity Real Estate

218-237-3333

info@affinityrealestate.com



Affinity Real Estate - 600 Park Avenue South - Park Rapids MN 56470



website: www.AffinityRealEstate.com | email: info@affinityrealestate.com | office: 218-237-3333 | fax: 218-237-3377



\$75,000
 MLS 7000350 Land
 TBD Gradvahl Drive
 Pequot Lakes MN 56472



website: www.AffinityRealEstate.com | email: info@affinityrealestate.com | office: 218-237-3333 | fax: 218-237-3377



\$75,000
MLS 7000350 Land
TBD Gravidahl Drive
Pequot Lakes MN 56472



website: www.AffinityRealEstate.com | email: info@affinityrealestate.com | office: 218-237-3333 | fax: 218-237-3377



\$75,000
MLS 7000350 Land
TBD Gravidahl Drive
Pequot Lakes MN 56472