



MLS 7000680 Residential

**\$259,000**

1,944 sq ft  
3 bedrooms  
2 baths

14593 US 71  
Park Rapids MN 56470

Status: Pending

**Description:**

Enjoy nearly 2,000 sq ft of comfortable living in this well-kept 3 bedroom home with an office set on 1.7 acres just 3.5 miles south of Park Rapids. The layout features an eat-in kitchen, dining room and a primary suite with a walk-in closet and private bath. Outside you'll love the large backyard, deck and the convenience of an attached insulated and heated garage. An additional 30x56 pole building provides excellent storage or workplace for equipment, vehicles or hobbies. Don't miss this one!

**Additional Details:**

Year Built	2005
Lot Acres	1.7
Lot Dimensions	193 x 338 x 257 x 327
Garage Stalls	2
School District	1384
Taxes	\$1,394
Taxes with Assessments	\$1,394
Tax Year	2025

**Additional Features:**

**Basement:** Crawl Space **Fuel:** Array **Garage:** 2 **Heat:** Forced Air **Sewer:** Tank with Drainage Field **Water:** Drilled, Private, Well **Air Conditioning:** Central Air

**Driving Directions:**

From 34/71 intersection go south on 71 for 3.5 miles. Property is on the right.



Listed By:  
Keller Williams Realty Professionals

Affinity Real Estate Inc. participates in the Regional Multiple Listing Service of Minnesota, Inc Broker Reciprocity (sm) program, allowing us to display other broker's listings on our website. All properties are subject to prior sale, change or withdrawal.



**Call Affinity Real Estate**

**218-237-3333**

**info@affinityrealestate.com**



**Affinity Real Estate - 600 Park Avenue South - Park Rapids MN 56470**



website: [www.AffinityRealEstate.com](http://www.AffinityRealEstate.com) | email: [info@affinityrealestate.com](mailto:info@affinityrealestate.com) | office: 218-237-3333 | fax:218-237-3377

**Affinity**  
REAL ESTATE INC

**\$259,000**  
MLS 7000680 Residential  
14593 US 71  
Park Rapids MN 56470



website: [www.AffinityRealEstate.com](http://www.AffinityRealEstate.com) | email: [info@affinityrealestate.com](mailto:info@affinityrealestate.com) | office: 218-237-3333 | fax:218-237-3377

**Affinity**  
REAL ESTATE INC

**\$259,000**  
MLS 7000680 Residential  
14593 US 71  
Park Rapids MN 56470



website: [www.AffinityRealEstate.com](http://www.AffinityRealEstate.com) | email: [info@affinityrealestate.com](mailto:info@affinityrealestate.com) | office: 218-237-3333 | fax:218-237-3377

**Affinity**  
REAL ESTATE INC

**\$259,000**  
MLS 7000680 Residential  
14593 US 71  
Park Rapids MN 56470



website: [www.AffinityRealEstate.com](http://www.AffinityRealEstate.com) | email: [info@affinityrealestate.com](mailto:info@affinityrealestate.com) | office: 218-237-3333 | fax: 218-237-3377



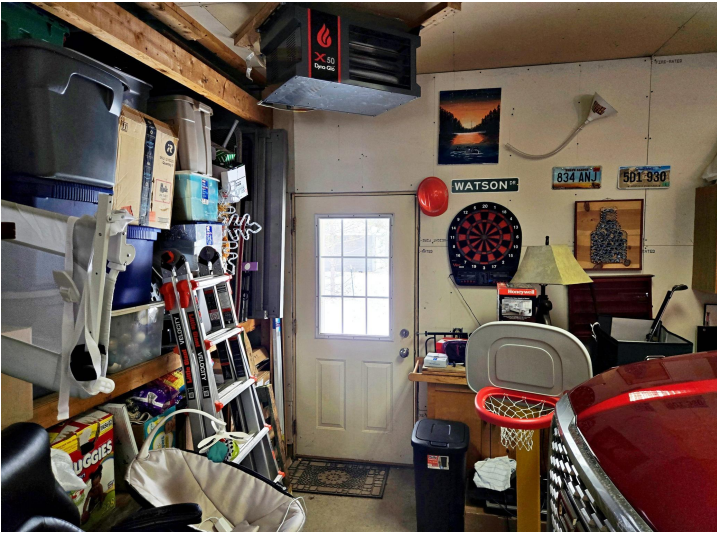
**\$259,000**  
MLS 7000680 Residential  
14593 US 71  
Park Rapids MN 56470



website: [www.AffinityRealEstate.com](http://www.AffinityRealEstate.com) | email: [info@affinityrealestate.com](mailto:info@affinityrealestate.com) | office: 218-237-3333 | fax: 218-237-3377

**Affinity**  
REAL ESTATE INC

**\$259,000**  
MLS 7000680 Residential  
14593 US 71  
Park Rapids MN 56470



website: [www.AffinityRealEstate.com](http://www.AffinityRealEstate.com) | email: [info@affinityrealestate.com](mailto:info@affinityrealestate.com) | office: 218-237-3333 | fax: 218-237-3377

**Affinity**  
REAL ESTATE INC

**\$259,000**  
MLS 7000680 Residential  
14593 US 71  
Park Rapids MN 56470



website: [www.AffinityRealEstate.com](http://www.AffinityRealEstate.com) | email: [info@affinityrealestate.com](mailto:info@affinityrealestate.com) | office: 218-237-3333 | fax:218-237-3377



**\$259,000**  
MLS 7000680 Residential  
14593 US 71  
Park Rapids MN 56470