



MLS 7000790 Land

\$15,000

0.92 Acres
Raw Land

TBD Eastgate Road
Motley MN 56466

Status: Active

Description:

Camp or build your dream cabin in Wilderness Park HOA, an outdoor enthusiast's paradise offering lake access with boats, a clubhouse, pool, tennis, and direct links to prime ATV & snowmobile trails, plus fishing & abundant wildlife—perfect for adventure seekers wanting rustic fun near Leader, MN!. The town of Leader features the Bear's Den bar for family dining and summer pig races.

Additional Details:

Lot Acres	0.92
Lot Dimensions	150x290
School District	1062
Taxes	\$64
Taxes with Assessments	\$64
Tax Year	2025

Additional Features:

Driving Directions:

From Motley, take MN-64 N to 76th St SW in Meadow Brook Township
14 min (13.5 mi)
Continue on 76th St SW. Take King Richard Ave SW to Poplar Dr
11 min (6.0 mi) lot is located to the North of 5028 Poplar Dr
Motley, MN 56466



Listed By:
Century 21 Brainerd Realty

Affinity Real Estate Inc. participates in the Regional Multiple Listing Service of Minnesota, Inc Broker Reciprocity (sm) program, allowing us to display other broker's listings on our website. All properties are subject to prior sale, change or withdrawal.



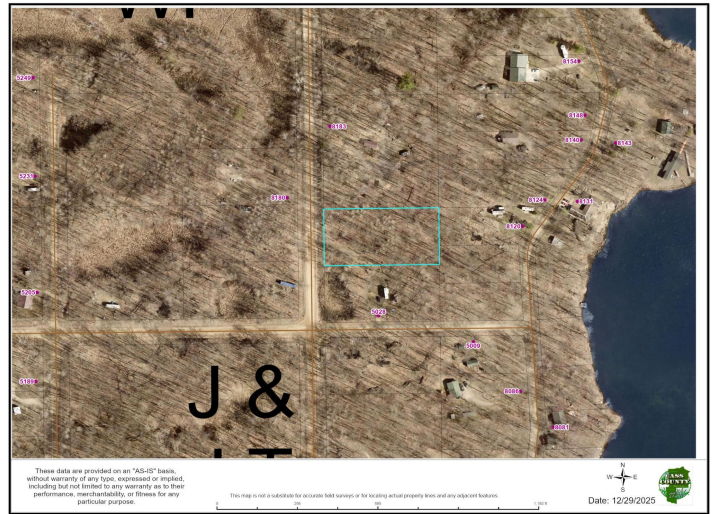
Call Affinity Real Estate

218-237-3333

info@affinityrealestate.com



Affinity Real Estate - 600 Park Avenue South - Park Rapids MN 56470



website: www.AffinityRealEstate.com | email: info@affinityrealestate.com | office: 218-237-3333 | fax: 218-237-3377



\$15,000
 MLS 7000790 Land
 TBD Eastgate Road
 Motley MN 56466