



MLS 7001116 Residential

\$2,795,000

5,424 sq ft
6 bedrooms
7 baths

46376 Jungle Shore Trail
Perham MN 56573

Status: Active

Description:

Welcome to Big Pine Lake. This rare gem offers the perfect blend of luxury, making it a dream home for those seeking a waterfront retreat with multi-generational living options. This exquisite property boasts a rare and level shoreline with 200' of sandy beach. Imagine waking up to the soothing sounds of waves and sun-kissed afternoons on your own private beach. Step inside this custom-designed home and prepare to be impressed by the stunning craftsmanship, cathedral ceilings and thoughtful details throughout. The main residence features 5BR's, 3BA and a gourmet kitchen that would delight any culinary connoisseur, featuring high end appliances, custom cabinetry, walk in pantry and a massive 10' island with ample seating. The spacious living area offers panoramic views of the lake and an open concept design. But the true magic of this property lies in its potential for multi-family living with its separate entrance and living quarters, creating a private 2 BR 3BA retreat for extended family, guests or rental income. A nice bonus with the New security system installed that offers preferred insurance rates. This property is truly a rare find! Make your appointment today to preview this exquisite lake property

Additional Details:

Year Built	2016
Lot Acres	1.986
Lot Dimensions	198x376x194x388
Garage Stalls	3
School District	1955
Taxes	\$9,484
Taxes with Assessments	\$9,484
Tax Year	2024

Additional Features:

Basement: None **Fuel:** Array **Garage:** 3 **Heat:** Forced Air, Fireplace(s), In-Floor Heating **Sewer:** Private Sewer **Water:** Well **Air Conditioning:** Central Air

Driving Directions:

From Hwy 10 E, go R on Co Rd 80, R on Co Rd 8, R on Jungle Shores Trl to 46376



Listed By:
Lakes Area Realty, Inc.

Affinity Real Estate Inc. participates in the Regional Multiple Listing Service of Minnesota, Inc Broker Reciprocity (sm) program, allowing us to display other broker's listings on our website. All properties are subject to prior sale, change or withdrawal.



Call Affinity Real Estate

218-237-3333

info@affinityrealestate.com



Affinity Real Estate - 600 Park Avenue South - Park Rapids MN 56470

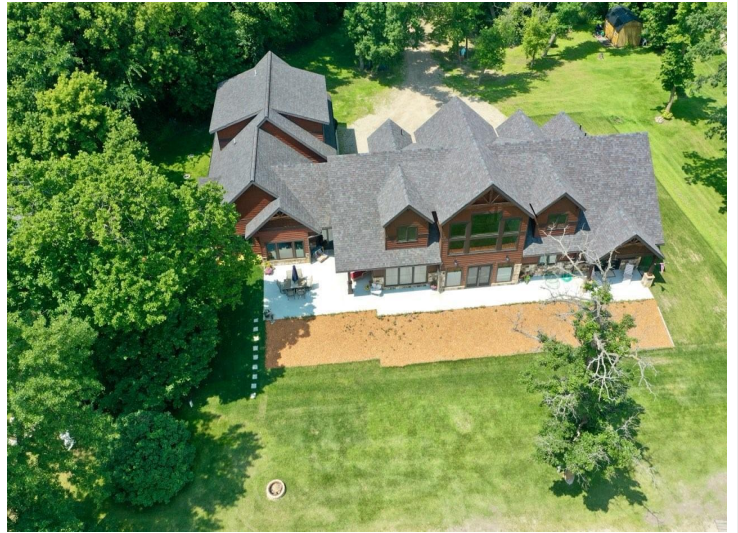


website: www.AffinityRealEstate.com | email: info@affinityrealestate.com | office: 218-237-3333 | fax: 218-237-3377

Affinity
REAL ESTATE INC

\$2,795,000

MLS 7001116 Residential
46376 Jungle Shore Trail
Perham MN 56573



website: www.AffinityRealEstate.com | email: info@affinityrealestate.com | office: 218-237-3333 | fax: 218-237-3377

Affinity
REAL ESTATE INC

\$2,795,000

MLS 7001116 Residential
46376 Jungle Shore Trail
Perham MN 56573



website: www.AffinityRealEstate.com | email: info@affinityrealestate.com | office: 218-237-3333 | fax: 218-237-3377

Affinity
REAL ESTATE INC

\$2,795,000

MLS 7001116 Residential
46376 Jungle Shore Trail
Perham MN 56573



website: www.AffinityRealEstate.com | email: info@affinityrealestate.com | office: 218-237-3333 | fax: 218-237-3377

Affinity
REAL ESTATE INC

\$2,795,000

MLS 7001116 Residential
46376 Jungle Shore Trail
Perham MN 56573



website: www.AffinityRealEstate.com | email: info@affinityrealestate.com | office: 218-237-3333 | fax: 218-237-3377

Affinity
REAL ESTATE INC

\$2,795,000

MLS 7001116 Residential
46376 Jungle Shore Trail
Perham MN 56573



website: www.AffinityRealEstate.com | email: info@affinityrealestate.com | office: 218-237-3333 | fax: 218-237-3377

Affinity
REAL ESTATE INC

\$2,795,000

MLS 7001116 Residential
46376 Jungle Shore Trail
Perham MN 56573



website: www.AffinityRealEstate.com | email: info@affinityrealestate.com | office: 218-237-3333 | fax: 218-237-3377



\$2,795,000

MLS 7001116 Residential
46376 Jungle Shore Trail
Perham MN 56573



website: www.AffinityRealEstate.com | email: info@affinityrealestate.com | office: 218-237-3333 | fax: 218-237-3377

Affinity
REAL ESTATE INC

\$2,795,000

MLS 7001116 Residential
46376 Jungle Shore Trail
Perham MN 56573



website: www.AffinityRealEstate.com | email: info@affinityrealestate.com | office: 218-237-3333 | fax: 218-237-3377



\$2,795,000

MLS 7001116 Residential
46376 Jungle Shore Trail
Perham MN 56573



website: www.AffinityRealEstate.com | email: info@affinityrealestate.com | office: 218-237-3333 | fax: 218-237-3377

Affinity
REAL ESTATE INC

\$2,795,000

MLS 7001116 Residential
46376 Jungle Shore Trail
Perham MN 56573



website: www.AffinityRealEstate.com | email: info@affinityrealestate.com | office: 218-237-3333 | fax: 218-237-3377

Affinity
REAL ESTATE INC

\$2,795,000

MLS 7001116 Residential
46376 Jungle Shore Trail
Perham MN 56573



website: www.AffinityRealEstate.com | email: info@affinityrealestate.com | office: 218-237-3333 | fax: 218-237-3377

Affinity
REAL ESTATE INC

\$2,795,000

MLS 7001116 Residential
46376 Jungle Shore Trail
Perham MN 56573



website: www.AffinityRealEstate.com | email: info@affinityrealestate.com | office: 218-237-3333 | fax: 218-237-3377



\$2,795,000

MLS 7001116 Residential
46376 Jungle Shore Trail
Perham MN 56573