



MLS 7001169 Residential

\$349,900

2,304 sq ft
2 bedrooms
2 baths

18204 State Highway 210
Ironton MN 56455

Status: Active

Description:

Welcome to your private retreat on nearly 8 acres in scenic Ironton, price below county assessed value! This spacious 2-bed, 2-bath one-level home boasts vaulted T&G ceilings, a cozy stone gas fireplace, and geothermal in-floor heat for year-round comfort. Enjoy effortless accessibility and open living spaces designed for entertaining. With 2300+ sqf there is plenty of room to add additional bedrooms if needed. Two-car heated garage plus detached motorhome garage, abundant storage, and a 12x12 garden shed make this property perfect for hobbyists and outdoor lovers alike. Don't miss this unique opportunity to live country close-in — schedule your showing today!

Additional Details:

Year Built	2005
Lot Acres	7.92
Lot Dimensions	525 x 655
Garage Stalls	4
School District	904
Taxes	\$1,814
Taxes with Assessments	\$1,814
Tax Year	2025

Additional Features:

Basement: None **Fuel:** Array **Garage:** 4 **Heat:** Baseboard, Geothermal, Heat Pump **Sewer:** Private Sewer **Water:** Well **Air Conditioning:** Ductless Mini-Split, Geothermal, Wall Unit(s)

Driving Directions:

From Ironton, west on State Hwy 210 to sign & address on the right.



Listed By:
Woods to Water Real Estate

Affinity Real Estate Inc. participates in the Regional Multiple Listing Service of Minnesota, Inc Broker Reciprocity (sm) program, allowing us to display other broker's listings on our website. All properties are subject to prior sale, change or withdrawal.



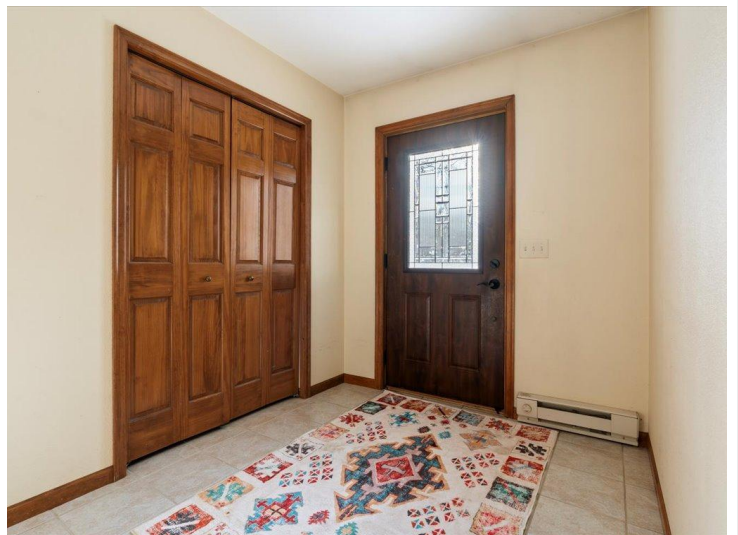
Call Affinity Real Estate

218-237-3333

info@affinityrealestate.com



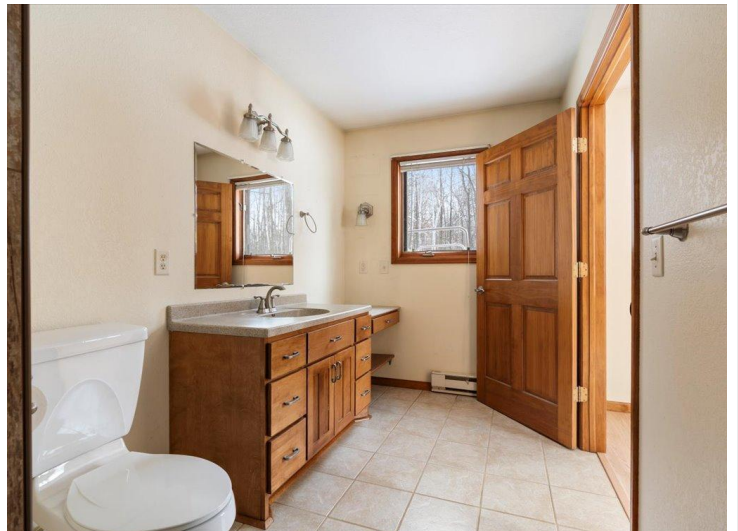
Affinity Real Estate - 600 Park Avenue South - Park Rapids MN 56470



website: www.AffinityRealEstate.com | email: info@affinityrealestate.com | office: 218-237-3333 | fax: 218-237-3377



\$349,900
 MLS 7001169 Residential
 18204 State Highway 210
 Ironton MN 56455



website: www.AffinityRealEstate.com | email: info@affinityrealestate.com | office: 218-237-3333 | fax: 218-237-3377

Affinity
REAL ESTATE INC

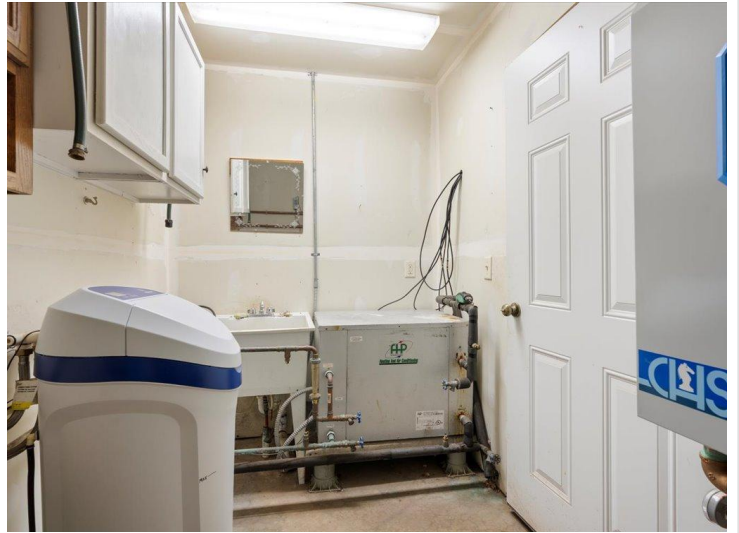
\$349,900
MLS 7001169 Residential
18204 State Highway 210
Ironton MN 56455



website: www.AffinityRealEstate.com | email: info@affinityrealestate.com | office: 218-237-3333 | fax: 218-237-3377



\$349,900
 MLS 7001169 Residential
 18204 State Highway 210
 Ironton MN 56455



website: www.AffinityRealEstate.com | email: info@affinityrealestate.com | office: 218-237-3333 | fax: 218-237-3377

Affinity
REAL ESTATE INC

\$349,900

MLS 7001169 Residential
18204 State Highway 210
Ironton MN 56455



website: www.AffinityRealEstate.com | email: info@affinityrealestate.com | office: 218-237-3333 | fax: 218-237-3377

Affinity
REAL ESTATE INC

\$349,900
MLS 7001169 Residential
18204 State Highway 210
Ironton MN 56455



website: www.AffinityRealEstate.com | email: info@affinityrealestate.com | office: 218-237-3333 | fax: 218-237-3377

Affinity
REAL ESTATE INC

\$349,900
MLS 7001169 Residential
18204 State Highway 210
Ironton MN 56455



website: www.AffinityRealEstate.com | email: info@affinityrealestate.com | office: 218-237-3333 | fax: 218-237-3377



\$349,900

MLS 7001169 Residential
18204 State Highway 210
Ironton MN 56455



website: www.AffinityRealEstate.com | email: info@affinityrealestate.com | office: 218-237-3333 | fax: 218-237-3377



\$349,900

MLS 7001169 Residential
18204 State Highway 210
Ironton MN 56455