



MLS 7001225 Residential

\$74,900

1,400 sq ft
1 bedrooms
3 baths

105 Main Street
Eagle Bend MN 56446

Status: Active

Description:

Step into a piece of history in the heart of downtown Eagle Bend. This solid brick former post office has been reimagined as a 1-bedroom, 3 bathroom home with options to have more bedrooms. It offers a unique layout, charming character, solid construction, and is full of potential. The affordable price point makes it a great opportunity for investors or buyers looking for a one-of-a-kind property. Bring your ideas to make it you own, this property offers endless possibilities. Enjoy small-town living with shops, dining and other services just steps away. Schedule a showing today!

Additional Details:

Year Built	1940
Lot Acres	0.157
Lot Dimensions	50x135
School District	2267
Taxes	\$248
Taxes with Assessments	\$834
Tax Year	2025

Additional Features:

Basement: Full **Fuel:** Array **Heat:** Forced Air **Sewer:** City Sewer/Connected **Water:** City Water/Connected **Air Conditioning:** None

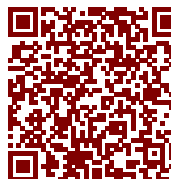
Driving Directions:

From Hwy 71, east to address.



Listed By:
eXp Realty

Affinity Real Estate Inc. participates in the Regional Multiple Listing Service of Minnesota, Inc Broker Reciprocity (sm) program, allowing us to display other broker's listings on our website. All properties are subject to prior sale, change or withdrawal.



Call Affinity Real Estate

218-237-3333

info@affinityrealestate.com



Affinity Real Estate - 600 Park Avenue South - Park Rapids MN 56470



website: www.AffinityRealEstate.com | email: info@affinityrealestate.com | office: 218-237-3333 | fax: 218-237-3377

Affinity
REAL ESTATE INC

\$74,900
MLS 7001225 Residential
105 Main Street
Eagle Bend MN 56446



website: www.AffinityRealEstate.com | email: info@affinityrealestate.com | office: 218-237-3333 | fax: 218-237-3377

Affinity
REAL ESTATE INC

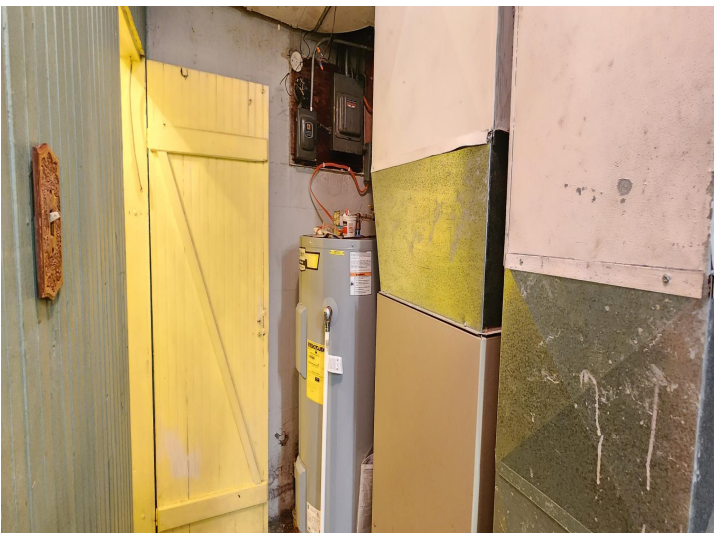
\$74,900
MLS 7001225 Residential
105 Main Street
Eagle Bend MN 56446



website: www.AffinityRealEstate.com | email: info@affinityrealestate.com | office: 218-237-3333 | fax: 218-237-3377

Affinity
REAL ESTATE INC

\$74,900
MLS 7001225 Residential
105 Main Street
Eagle Bend MN 56446



website: www.AffinityRealEstate.com | email: info@affinityrealestate.com | office: 218-237-3333 | fax: 218-237-3377

Affinity
REAL ESTATE INC

\$74,900
MLS 7001225 Residential
105 Main Street
Eagle Bend MN 56446



website: www.AffinityRealEstate.com | email: info@affinityrealestate.com | office: 218-237-3333 | fax: 218-237-3377



\$74,900
MLS 7001225 Residential
105 Main Street
Eagle Bend MN 56446