



MLS 7001374 Residential

**\$430,805**

1,594 sq ft  
3 bedrooms  
2 baths

14518 Lynndale Drive  
Baxter MN 56401

Status: Active

**Description:**

Presenting the "Serenity" model, a harmonious blend of comfort and elegance all on one level. This Zero step 1-level home features 3 Bedrooms, 2 Bathrooms available features include: A cozy fireplace and a convenient 3-stall garage and a range of single-family home options. At Thomas Allen Homes, we believe in customization to make it your own. Select your finishes, colors, and options to curate a home that mirrors your unique style. From the flooring to the fixtures, make it truly yours. A Seamless Experience: Building your dream home should be thrilling, not stressful. We take pride in ensuring your journey is exciting, seamless. Take your pick from a variety of plans and lots in the Brainerd Lakes Area. There's no waiting for the right season. Secure your spot now and embark on this incredible journey.

**Additional Details:**

Year Built	2025
Lot Acres	0.4
Lot Dimensions	110x160
Garage Stalls	2
School District	896
Taxes	\$184
Taxes with Assessments	\$184
Tax Year	2025

**Additional Features:**

**Basement:** Block, Crawl Space, Concrete **Fuel:** Array **Garage:** 2 **Heat:** Forced Air **Sewer:** City Sewer/Connected **Water:** City Water/Connected  
**Air Conditioning:** Central Air

**Driving Directions:**

From Hwy 371 in Baxter: go west on Clearwater Road to Left on Lynndale Drive.



Listed By:  
Edina Realty, Inc.

Affinity Real Estate Inc. participates in the Regional Multiple Listing Service of Minnesota, Inc Broker Reciprocity (sm) program, allowing us to display other broker's listings on our website. All properties are subject to prior sale, change or withdrawal.



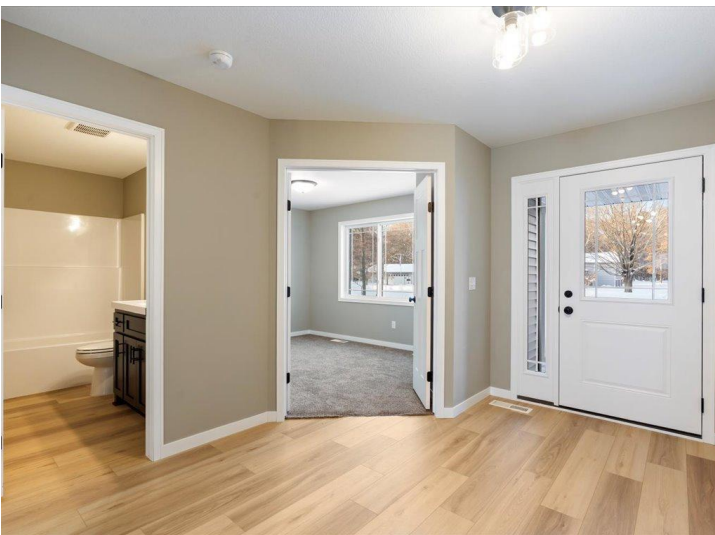
**Call Affinity Real Estate**

**218-237-3333**

**info@affinityrealestate.com**



**Affinity Real Estate - 600 Park Avenue South - Park Rapids MN 56470**



website: [www.AffinityRealEstate.com](http://www.AffinityRealEstate.com) | email: [info@affinityrealestate.com](mailto:info@affinityrealestate.com) | office: 218-237-3333 | fax: 218-237-3377



**\$430,805**  
 MLS 7001374 Residential  
 14518 Lynndale Drive  
 Baxter MN 56401





website: [www.AffinityRealEstate.com](http://www.AffinityRealEstate.com) | email: [info@affinityrealestate.com](mailto:info@affinityrealestate.com) | office: 218-237-3333 | fax: 218-237-3377



**\$430,805**  
 MLS 7001374 Residential  
 14518 Lynndale Drive  
 Baxter MN 56401





website: [www.AffinityRealEstate.com](http://www.AffinityRealEstate.com) | email: [info@affinityrealestate.com](mailto:info@affinityrealestate.com) | office: 218-237-3333 | fax: 218-237-3377



**\$430,805**  
 MLS 7001374 Residential  
 14518 Lynndale Drive  
 Baxter MN 56401