



MLS 7001474 Land

\$34,500

1 Acres
Raw Land

Lot 35 Choctaw Circle
Breezy Point MN 56472

Status: Active

Description:

Build your Up North getaway on ~1 acre on Choctaw Circle in the heart of the Pequot Lakes/Breezy Point area! This wooded homesite sits on a paved road and offers that classic Northwoods feel—privacy, tall trees, and plenty of space for a future cabin or full-time home. Enjoy an easy drive to area highlights like Pelican Lake, Lake Ossawinnamakee, and nearby golf courses, plus all the dining, shopping, and recreation the Lakes Area is known for.

Additional Details:

| | |
|------------------------|-----------------------|
| Lot Acres | 1 |
| Lot Dimensions | 152x262x104x55x45x342 |
| School District | 909 |
| Taxes | \$148 |
| Taxes with Assessments | \$148 |
| Tax Year | 2025 |

Additional Features:

Driving Directions:

The land is located to the left of the property address - 32392 CHOCTAW CIR, PEQUOT LAKES, MN 56472



Listed By:
Jeff Hagel

Affinity Real Estate Inc. participates in the Regional Multiple Listing Service of Minnesota, Inc Broker Reciprocity (sm) program, allowing us to display other broker's listings on our website. All properties are subject to prior sale, change or withdrawal.



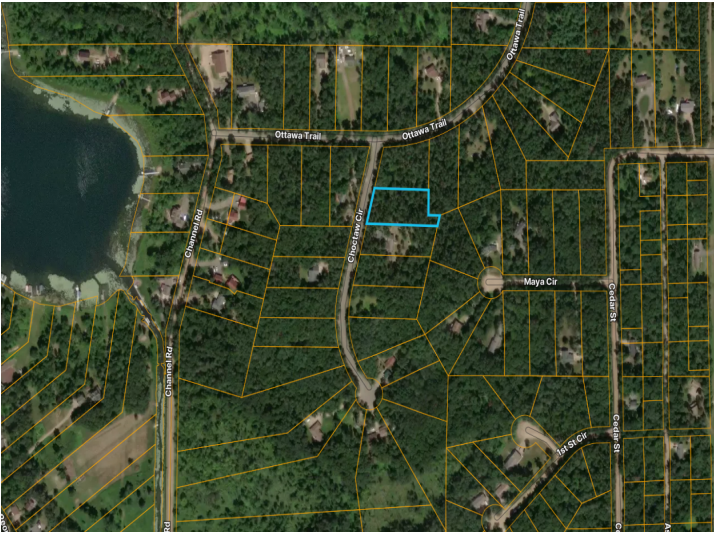
Call Affinity Real Estate

218-237-3333

info@affinityrealestate.com



Affinity Real Estate - 600 Park Avenue South - Park Rapids MN 56470



website: www.AffinityRealEstate.com | email: info@affinityrealestate.com | office: 218-237-3333 | fax:218-237-3377



\$34,500
MLS 7001474 Land
Lot 35 Choctaw Circle
Breezy Point MN 56472