



MLS 7001722 Residential

**\$449,900**

1,370 sq ft  
2 bedrooms  
2 baths

33558 251st Avenue  
Browerville MN 56438

Status: Active

**Description:**

Tucked away at the end of a quiet, dead-end road, this charming 1½-story, year-round lake home sits on the shores of Horseshoe Lake with over 200 feet of level frontage. Recent updates—including new roofs and LP SmartSide Diamond Kote siding—mean the major improvements are already complete. Inside, you're welcomed by vaulted tongue-and-groove ceilings, a striking wall of windows with sweeping lake views, custom log railings, and a cozy up-north feel throughout. The home offers two bedrooms, two bathrooms, main-floor laundry, and a sunroom that could easily serve as a third bedroom. The partially unfinished basement includes an egress window and newer HVAC system, providing room to expand. An oversized two-car garage features an unfinished lakeside room ready for your finishing touches. Outdoors, enjoy a gated driveway, fenced yard, lakeside patio, sandy beach, 12' x 20' lakeside storage shed for all your toys, and a convenient carport. This is a must-see lake property.

**Additional Details:**

Year Built	2004
Lot Acres	2.16
Lot Dimensions	204x368
Garage Stalls	2
School District	2268
Taxes	\$1,084
Taxes with Assessments	\$1,138
Tax Year	2025

**Additional Features:**

**Basement:** Block, Partial, Unfinished **Fuel:** Array **Garage:** 2 **Heat:** Forced Air **Sewer:** Private Sewer, Septic System Compliant - Yes **Water:** Well  
**Air Conditioning:** Central Air

**Driving Directions:**

From County Road 16 turn north on County Road 18 to County Road 62 turn on 251st Ave to property on left.



Listed By:  
Weichert REALTORS Tower Properties

Affinity Real Estate Inc. participates in the Regional Multiple Listing Service of Minnesota, Inc Broker Reciprocity (sm) program, allowing us to display other broker's listings on our website. All properties are subject to prior sale, change or withdrawal.



**Call Affinity Real Estate**

**218-237-3333**

**info@affinityrealestate.com**



**Affinity Real Estate - 600 Park Avenue South - Park Rapids MN 56470**



website: [www.AffinityRealEstate.com](http://www.AffinityRealEstate.com) | email: [info@affinityrealestate.com](mailto:info@affinityrealestate.com) | office: 218-237-3333 | fax: 218-237-3377

**Affinity**  
REAL ESTATE INC

**\$449,900**  
MLS 7001722 Residential  
33558 251st Avenue  
Browerville MN 56438





website: [www.AffinityRealEstate.com](http://www.AffinityRealEstate.com) | email: [info@affinityrealestate.com](mailto:info@affinityrealestate.com) | office: 218-237-3333 | fax: 218-237-3377

**Affinity**  
REAL ESTATE INC

**\$449,900**  
MLS 7001722 Residential  
33558 251st Avenue  
Browerville MN 56438





website: [www.AffinityRealEstate.com](http://www.AffinityRealEstate.com) | email: [info@affinityrealestate.com](mailto:info@affinityrealestate.com) | office: 218-237-3333 | fax: 218-237-3377

**Affinity**  
REAL ESTATE INC

**\$449,900**  
MLS 7001722 Residential  
33558 251st Avenue  
Browerville MN 56438





website: [www.AffinityRealEstate.com](http://www.AffinityRealEstate.com) | email: [info@affinityrealestate.com](mailto:info@affinityrealestate.com) | office: 218-237-3333 | fax: 218-237-3377

**Affinity**  
REAL ESTATE INC

**\$449,900**  
MLS 7001722 Residential  
33558 251st Avenue  
Browerville MN 56438



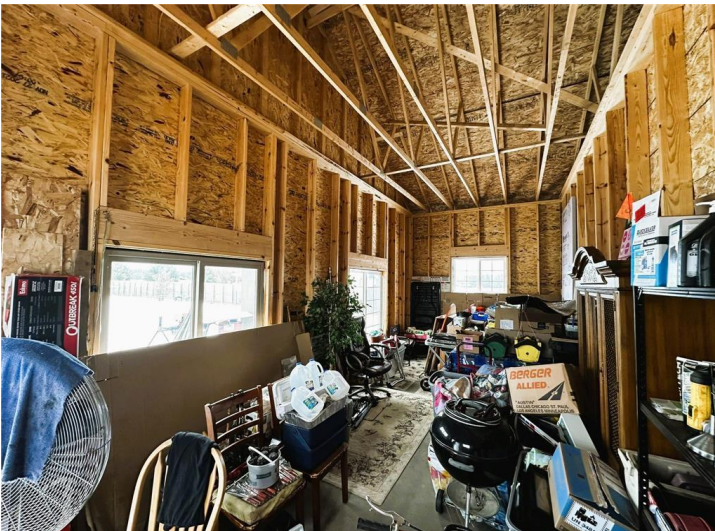
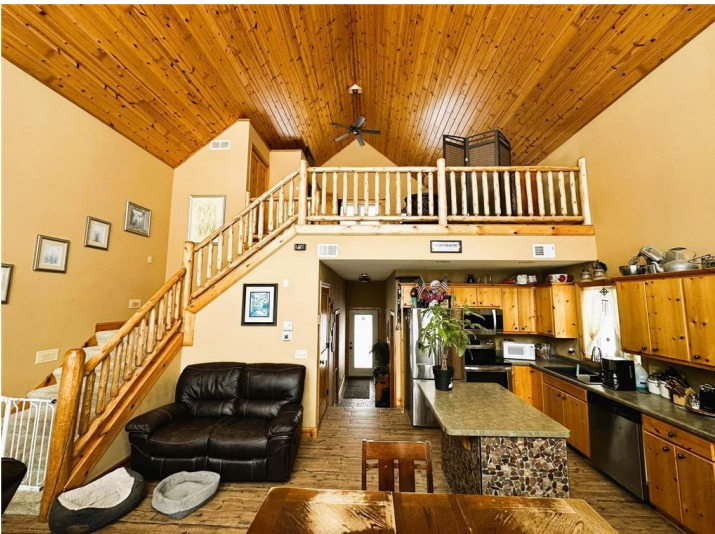


website: [www.AffinityRealEstate.com](http://www.AffinityRealEstate.com) | email: [info@affinityrealestate.com](mailto:info@affinityrealestate.com) | office: 218-237-3333 | fax: 218-237-3377

**Affinity**  
REAL ESTATE INC

**\$449,900**  
MLS 7001722 Residential  
33558 251st Avenue  
Browerville MN 56438





website: [www.AffinityRealEstate.com](http://www.AffinityRealEstate.com) | email: [info@affinityrealestate.com](mailto:info@affinityrealestate.com) | office: 218-237-3333 | fax: 218-237-3377

**Affinity**  
REAL ESTATE INC

**\$449,900**  
MLS 7001722 Residential  
33558 251st Avenue  
Browerville MN 56438





website: [www.AffinityRealEstate.com](http://www.AffinityRealEstate.com) | email: [info@affinityrealestate.com](mailto:info@affinityrealestate.com) | office: 218-237-3333 | fax: 218-237-3377



**\$449,900**  
MLS 7001722 Residential  
33558 251st Avenue  
Browerville MN 56438