



MLS 7002353 Residential

**\$249,900**

845 sq ft  
2 bedrooms  
2 baths

14384 County Road 116  
Brainerd MN 56465

Status: Pending

**Description:**

Nestled on 2.27 beautifully wooded acres, this inviting 2-bedroom, 1-bath home offers the perfect blend of privacy, comfort, and lakes-area living. Enjoy deeded access to Lower Mission Lake—ideal for boating, fishing, and relaxing summer days on the water.

The home features newer windows along with a newer furnace and central air for year-round comfort, plus a brand-new water heater for peace of mind. Outside, you'll find a spacious 20x30 detached two-car garage offering ample storage for vehicles, toys, and tools, as well as a seasonal 8x11 greenhouse—perfect for gardening enthusiasts.

Surrounded by mature trees, this property provides a serene setting while remaining close to the amenities and recreation the Merrifield area is known for. Whether you're looking for a year-round residence, weekend getaway, or investment opportunity, this lakes-area property delivers space, updates, and access to one of the area's most desirable lakes.

**Additional Details:**

Year Built	1976
Lot Acres	2.27
Lot Dimensions	100x985
Garage Stalls	2
School District	904
Taxes	\$351
Taxes with Assessments	\$371
Tax Year	2025

**Additional Features:**

**Basement:** Block, Crawl Space **Fuel:** Array **Garage:** 2 **Heat:** Forced Air **Sewer:** Private Sewer **Water:** Well **Air Conditioning:** Central Air

**Driving Directions:**

From County Rd 2, North of Merrifield and South of Crosslake, go East on County Rd 116. The home is on the left.  
Listed By: LPT Realty, LLC



Affinity Real Estate Inc. participates in the Regional Multiple Listing Service of Minnesota, Inc Broker Reciprocity (sm) program, allowing us to display other broker's listings on our website. All properties are subject to prior sale, change or withdrawal.



**Call Affinity Real Estate**

**218-237-3333**

**info@affinityrealestate.com**



**Affinity Real Estate - 600 Park Avenue South - Park Rapids MN 56470**





website: [www.AffinityRealEstate.com](http://www.AffinityRealEstate.com) | email: [info@affinityrealestate.com](mailto:info@affinityrealestate.com) | office: 218-237-3333 | fax: 218-237-3377

**Affinity**  
REAL ESTATE INC

**\$249,900**  
MLS 7002353 Residential  
14384 County Road 116  
Brainerd MN 56465



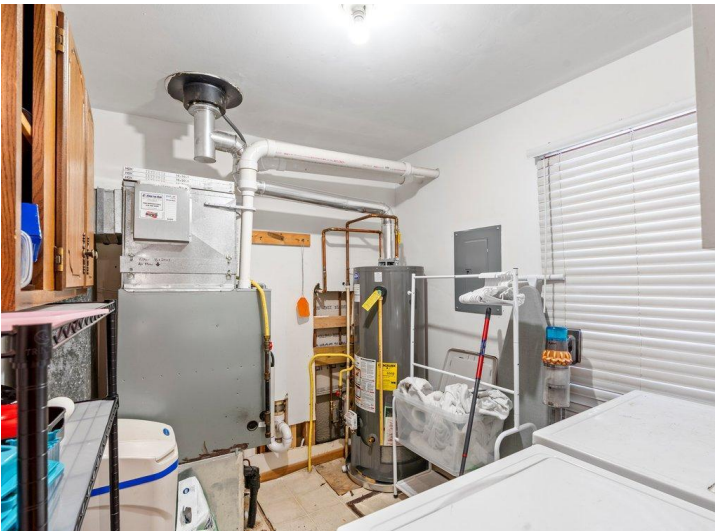


website: [www.AffinityRealEstate.com](http://www.AffinityRealEstate.com) | email: [info@affinityrealestate.com](mailto:info@affinityrealestate.com) | office: 218-237-3333 | fax: 218-237-3377



**\$249,900**  
 MLS 7002353 Residential  
 14384 County Road 116  
 Brainerd MN 56465





website: [www.AffinityRealEstate.com](http://www.AffinityRealEstate.com) | email: [info@affinityrealestate.com](mailto:info@affinityrealestate.com) | office: 218-237-3333 | fax: 218-237-3377



**\$249,900**  
MLS 7002353 Residential  
14384 County Road 116  
Brainerd MN 56465





website: [www.AffinityRealEstate.com](http://www.AffinityRealEstate.com) | email: [info@affinityrealestate.com](mailto:info@affinityrealestate.com) | office: 218-237-3333 | fax: 218-237-3377

**Affinity**  
REAL ESTATE INC

**\$249,900**  
MLS 7002353 Residential  
14384 County Road 116  
Brainerd MN 56465





website: [www.AffinityRealEstate.com](http://www.AffinityRealEstate.com) | email: [info@affinityrealestate.com](mailto:info@affinityrealestate.com) | office: 218-237-3333 | fax: 218-237-3377



**\$249,900**  
MLS 7002353 Residential  
14384 County Road 116  
Brainerd MN 56465