



MLS 7002420 Residential

\$670,000

1,860 sq ft
4 bedrooms
2 baths

41860 County Highway 1
Ottertail MN 56571

Status: Active

Description:

This beautiful, 4 bedroom 2 bath recently built year round home offers modern living with frontage on the channel that provides access to Otter Tail Lake. Featuring beautiful finishes throughout, the open-concept design is perfect for entertaining or enjoying peaceful living on the channel.. Whether you're relaxing by the water, boating, or simply enjoying the serene surroundings, this property promises peace and tranquility. Don't miss the opportunity to make this home your own.

Additional Details:

Year Built	2021
Lot Acres	0.454
Lot Dimensions	270x74
School District	1955
Taxes	\$3,108
Taxes with Assessments	\$3,108
Tax Year	2025

Additional Features:

Basement: None **Fuel:** Array **Heat:** Forced Air **Sewer:** Septic System Compliant - Yes **Water:** Well **Air Conditioning:** Central Air

Driving Directions:

From Ottertail City go West on Cnty Hwy 1 approximately 2 miles. House on South side of road.



Listed By:
Boll Realty

Affinity Real Estate Inc. participates in the Regional Multiple Listing Service of Minnesota, Inc Broker Reciprocity (sm) program, allowing us to display other broker's listings on our website. All properties are subject to prior sale, change or withdrawal.



Call Affinity Real Estate

218-237-3333

info@affinityrealestate.com



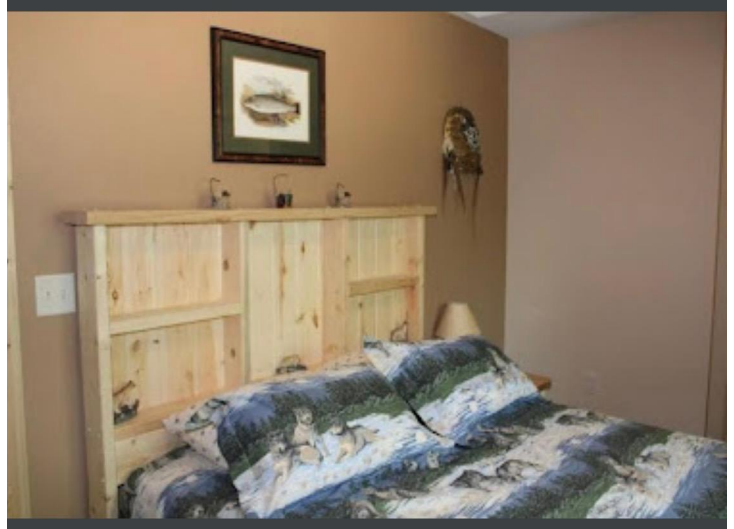
Affinity Real Estate - 600 Park Avenue South - Park Rapids MN 56470



website: www.AffinityRealEstate.com | email: info@affinityrealestate.com | office: 218-237-3333 | fax:218-237-3377



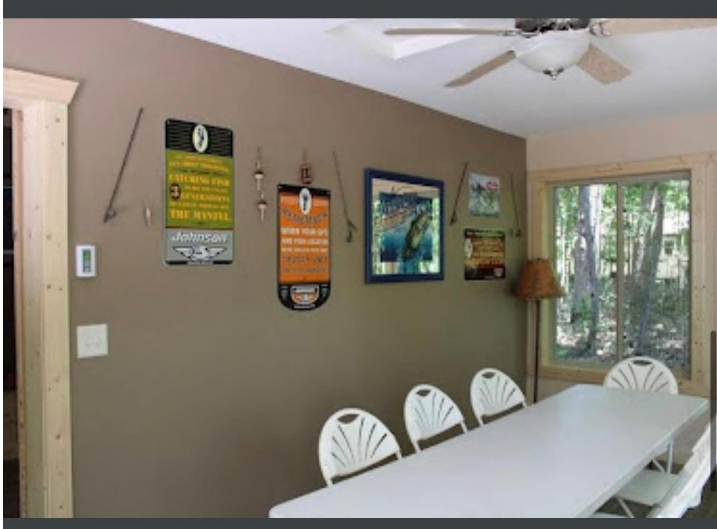
\$670,000
MLS 7002420 Residential
41860 County Highway 1
Ottertail MN 56571



website: www.AffinityRealEstate.com | email: info@affinityrealestate.com | office: 218-237-3333 | fax: 218-237-3377

Affinity
REAL ESTATE INC

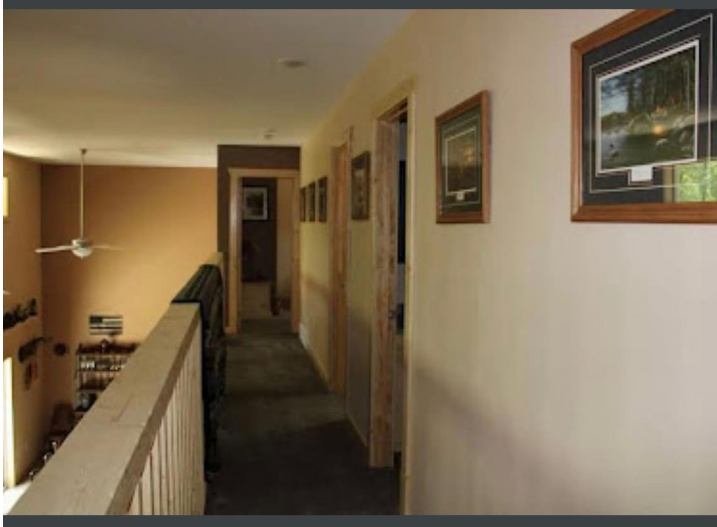
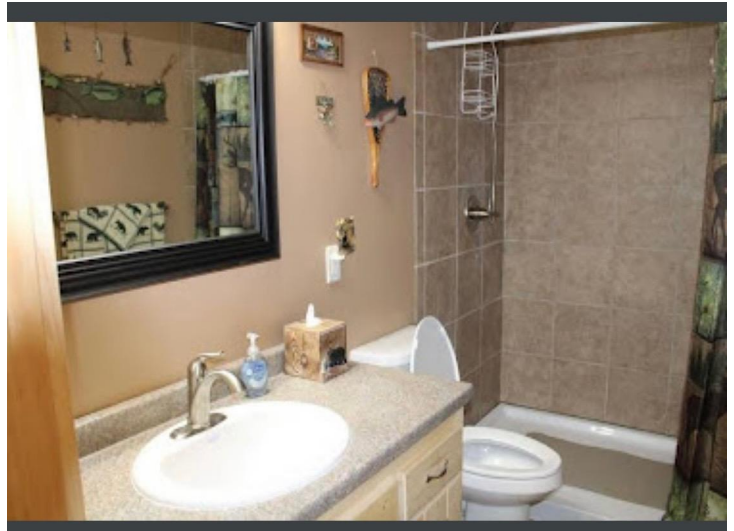
\$670,000
MLS 7002420 Residential
41860 County Highway 1
Ottertail MN 56571



website: www.AffinityRealEstate.com | email: info@affinityrealestate.com | office: 218-237-3333 | fax:218-237-3377

Affinity
REAL ESTATE INC

\$670,000
MLS 7002420 Residential
41860 County Highway 1
Ottetail MN 56571



website: www.AffinityRealEstate.com | email: info@affinityrealestate.com | office: 218-237-3333 | fax: 218-237-3377

Affinity
REAL ESTATE INC

\$670,000
MLS 7002420 Residential
41860 County Highway 1
Ottertail MN 56571



website: www.AffinityRealEstate.com | email: info@affinityrealestate.com | office: 218-237-3333 | fax:218-237-3377



\$670,000
MLS 7002420 Residential
41860 County Highway 1
Ottertail MN 56571



website: www.AffinityRealEstate.com | email: info@affinityrealestate.com | office: 218-237-3333 | fax: 218-237-3377



\$670,000
MLS 7002420 Residential
41860 County Highway 1
Ottertail MN 56571



website: www.AffinityRealEstate.com | email: info@affinityrealestate.com | office: 218-237-3333 | fax:218-237-3377



\$670,000
MLS 7002420 Residential
41860 County Highway 1
Ottertail MN 56571



website: www.AffinityRealEstate.com | email: info@affinityrealestate.com | office: 218-237-3333 | fax:218-237-3377



\$670,000
MLS 7002420 Residential
41860 County Highway 1
Ottertail MN 56571