



MLS 7002730 Residential

**\$359,950**

650 sq ft  
1 bedrooms  
2 baths

900 Park Avenue  
Park Rapids MN 56470

Status: Active

#### Description:

Welcome to this beautifully fully remodeled, year-round true log home, offering modern comfort, quality craftsmanship and unbeatable view and access to the water-all within walking distance to downtown Park Rapids. Thoughtfully updated from top to bottom, this home blends rustic charm with today's most desirable amenities and is turn-key.

Enjoy peace of mind with all-new electrical and plumbing, a high-efficiency combi boiler providing on-demand hot water and natural gas heat, and a new baseboard heating system with updated registers. The home is fully insulated-including the foundation-making it comfortable in every season.

The brand-new kitchen features soft-close cabinetry, modern finishes, and appliances new in 2024. Throughout the home you'll find custom trim and finish work, tongue-and-groove detailing, and brand-new LVP flooring with no transitions for a seamless look. Disc lighting throughout, and ceiling lights controlled by switches or remotes enhance both style and convenience.

The bathroom boasts a walk-in shower, and the walk-out basement adds functionality with a second toilet, utility sink, washer and dryer, and new sump pump.

Step outside to enjoy lake life at its best with a brand-new dock, boat slip, and direct river access connecting easily to Fish Hook Lake. Additional features include a sizable outdoor storage shed, 30-amp RV hookup with parking for a large RV, access to a shared fish cleaning shack and boat shed and year-round lake home living. Newly painted exterior, WiFi thermostat, City sewer and water, Natural gas heat, Walk-out basement, New dock section with boat slip, Access to fish cleaning shack and Access to additional boat shed. \$77 / Month Community Association Fee Covers, Electricity, City sewer and water, Association property taxes.

#### Additional Details:

Year Built	1930
Lot Acres	1909
Lot Dimensions	49x38x42x14x32
School District	1384
Taxes	\$2,342
Taxes with Assessments	\$2,342
Tax Year	2025

#### Additional Features:



Listed By:  
RE/MAX Advantage Plus

Affinity Real Estate Inc. participates in the Regional Multiple Listing Service of Minnesota, Inc Broker Reciprocity (sm) program, allowing us to display other broker's listings on our website. All properties are subject to prior sale, change or withdrawal.



Call Affinity Real Estate

**218-237-3333**

[info@affinityrealestate.com](mailto:info@affinityrealestate.com)

MLS REALTOR® EQUAL OPPORTUNITY north of Park Rapids,

Affinity Real Estate - 600 Park Avenue South - Park Rapids MN 56470





website: [www.AffinityRealEstate.com](http://www.AffinityRealEstate.com) | email: [info@affinityrealestate.com](mailto:info@affinityrealestate.com) | office: 218-237-3333 | fax: 218-237-3377



**\$359,950**  
 MLS 7002730 Residential  
 900 Park Avenue  
 Park Rapids MN 56470



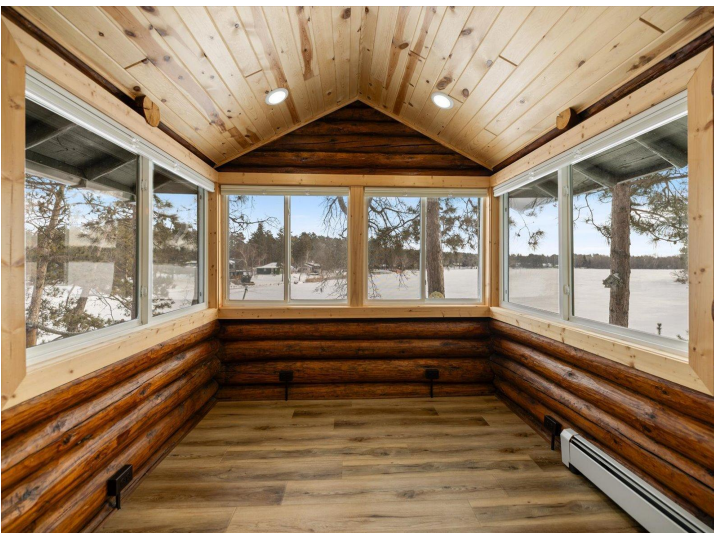


website: [www.AffinityRealEstate.com](http://www.AffinityRealEstate.com) | email: [info@affinityrealestate.com](mailto:info@affinityrealestate.com) | office: 218-237-3333 | fax: 218-237-3377



**\$359,950**  
 MLS 7002730 Residential  
 900 Park Avenue  
 Park Rapids MN 56470





website: [www.AffinityRealEstate.com](http://www.AffinityRealEstate.com) | email: [info@affinityrealestate.com](mailto:info@affinityrealestate.com) | office: 218-237-3333 | fax: 218-237-3377



**\$359,950**  
 MLS 7002730 Residential  
 900 Park Avenue  
 Park Rapids MN 56470





website: [www.AffinityRealEstate.com](http://www.AffinityRealEstate.com) | email: [info@affinityrealestate.com](mailto:info@affinityrealestate.com) | office: 218-237-3333 | fax: 218-237-3377



**\$359,950**  
 MLS 7002730 Residential  
 900 Park Avenue  
 Park Rapids MN 56470





website: [www.AffinityRealEstate.com](http://www.AffinityRealEstate.com) | email: [info@affinityrealestate.com](mailto:info@affinityrealestate.com) | office: 218-237-3333 | fax: 218-237-3377



**\$359,950**  
 MLS 7002730 Residential  
 900 Park Avenue  
 Park Rapids MN 56470





website: [www.AffinityRealEstate.com](http://www.AffinityRealEstate.com) | email: [info@affinityrealestate.com](mailto:info@affinityrealestate.com) | office: 218-237-3333 | fax: 218-237-3377

**Affinity**  
REAL ESTATE INC

**\$359,950**  
MLS 7002730 Residential  
900 Park Avenue  
Park Rapids MN 56470



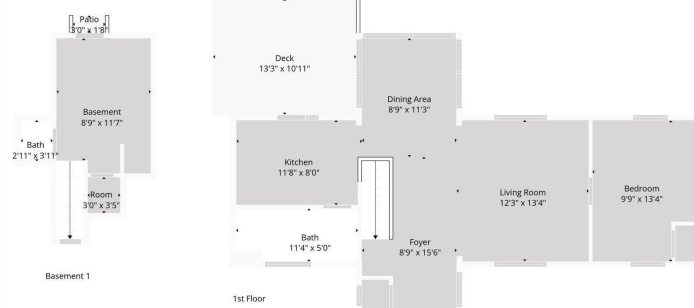


website: [www.AffinityRealEstate.com](http://www.AffinityRealEstate.com) | email: [info@affinityrealestate.com](mailto:info@affinityrealestate.com) | office: 218-237-3333 | fax: 218-237-3377



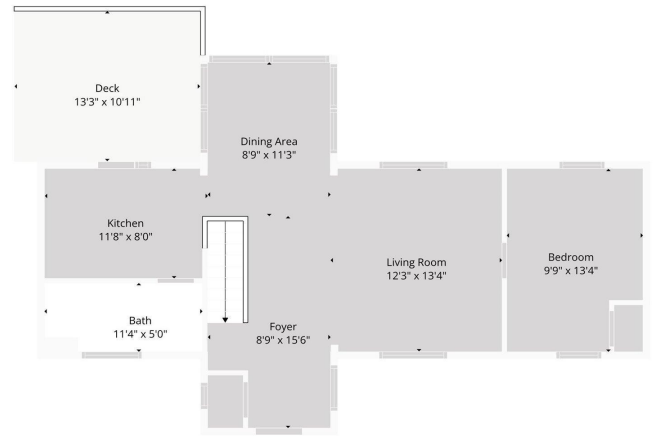
**\$359,950**  
MLS 7002730 Residential  
900 Park Avenue  
Park Rapids MN 56470





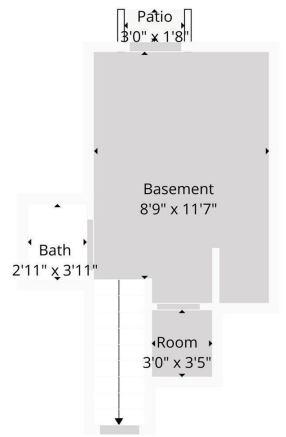
**TOTAL: 689 sq. ft.**  
 Basement 1: 0 sq. ft., 1st floor: 689 sq. ft.  
 EXCLUDED AREAS: BASEMENT: 142 sq. ft. TOILET: 11 sq. ft. PATIO: 5 sq. ft.  
 DECK: 146 sq. ft. WALLS: 105 sq. ft.

Floor Plan Created By Cubicase App. Measurements Deemed Highly Reliable But Not Guaranteed.



**TOTAL: 689 sq. ft.**  
 Basement 1: 0 sq. ft., 1st floor: 689 sq. ft.  
 EXCLUDED AREAS: BASEMENT: 142 sq. ft. TOILET: 11 sq. ft. PATIO: 5 sq. ft.  
 DECK: 146 sq. ft. WALLS: 105 sq. ft.

Floor Plan Created By Cubicase App. Measurements Deemed Highly Reliable But Not Guaranteed.



**TOTAL: 689 sq. ft.**  
 Basement 1: 0 sq. ft., 1st floor: 689 sq. ft.  
 EXCLUDED AREAS: BASEMENT: 142 sq. ft. TOILET: 11 sq. ft. PATIO: 5 sq. ft.  
 DECK: 146 sq. ft. WALLS: 105 sq. ft.

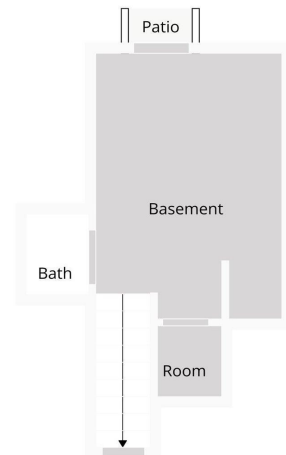
Floor Plan Created By Cubicase App. Measurements Deemed Highly Reliable But Not Guaranteed.



Floor Plan Created By Cubicase App. Measurements Deemed Highly Reliable But Not Guaranteed.



Floor Plan Created By Cubicase App. Measurements Deemed Highly Reliable But Not Guaranteed.



Floor Plan Created By Cubicase App. Measurements Deemed Highly Reliable But Not Guaranteed.

website: [www.AffinityRealEstate.com](http://www.AffinityRealEstate.com) | email: [info@affinityrealestate.com](mailto:info@affinityrealestate.com) | office: 218-237-3333 | fax: 218-237-3377

**Affinity**  
 REAL ESTATE INC

**\$359,950**  
 MLS 7002730 Residential  
 900 Park Avenue  
 Park Rapids MN 56470