



MLS 7002741 Residential

**\$399,000**

1,968 sq ft  
4 bedrooms  
2 baths

1323 Golf Course Road  
Grand Rapids MN 55744

Status: Coming Soon

**Description:**

So much charm in this four-bedroom, two-bath home set on 2.34 wooded acres tucked among towering pines just off Golf Course Road. Enjoy a peaceful country feel while being conveniently located in the heart of town. This well-maintained home features numerous updates, including beautifully remodeled bathrooms, refinished hardwood floors, updated lighting, and new kitchen countertops. A worry-free new roof on both the house and garage, improved landscaping, selective tree removal, and extensive service and maintenance provide peace of mind for the next owner. The basement offers a newly finished family room with new flooring along with a spacious utility room ideal for storage. Step outside to the detached screened-in building with concrete floors and windows, creating a wonderful space for gatherings in the private backyard. A detached two-stall garage is complemented by a third rear stall.

**Additional Details:**

Year Built	1962
Lot Acres	2.34
Lot Dimensions	294x288
Garage Stalls	3
School District	1410
Taxes	\$2,359
Taxes with Assessments	\$2,440
Tax Year	2025

**Additional Features:**

**Basement:** Block, Partially Finished **Fuel:** Array **Garage:** 3 **Heat:** Forced Air, Fireplace(s) **Sewer:** City Sewer/Connected **Water:** City Water/Connected, Well **Air Conditioning:** None

**Driving Directions:**

Golf Course Road on right before Grand Itasca



Listed By:  
COLDWELL BANKER NORTHWOODS

Affinity Real Estate Inc. participates in the Regional Multiple Listing Service of Minnesota, Inc Broker Reciprocity (sm) program, allowing us to display other broker's listings on our website. All properties are subject to prior sale, change or withdrawal.



**Call Affinity Real Estate**

**218-237-3333**

**info@affinityrealestate.com**



**Affinity Real Estate - 600 Park Avenue South - Park Rapids MN 56470**





website: [www.AffinityRealEstate.com](http://www.AffinityRealEstate.com) | email: [info@affinityrealestate.com](mailto:info@affinityrealestate.com) | office: 218-237-3333 | fax: 218-237-3377



**\$399,000**  
 MLS 7002741 Residential  
 1323 Golf Course Road  
 Grand Rapids MN 55744





website: [www.AffinityRealEstate.com](http://www.AffinityRealEstate.com) | email: [info@affinityrealestate.com](mailto:info@affinityrealestate.com) | office: 218-237-3333 | fax: 218-237-3377

**Affinity**  
REAL ESTATE INC

**\$399,000**  
MLS 7002741 Residential  
1323 Golf Course Road  
Grand Rapids MN 55744





website: [www.AffinityRealEstate.com](http://www.AffinityRealEstate.com) | email: [info@affinityrealestate.com](mailto:info@affinityrealestate.com) | office: 218-237-3333 | fax: 218-237-3377



**\$399,000**  
 MLS 7002741 Residential  
 1323 Golf Course Road  
 Grand Rapids MN 55744





website: [www.AffinityRealEstate.com](http://www.AffinityRealEstate.com) | email: [info@affinityrealestate.com](mailto:info@affinityrealestate.com) | office: 218-237-3333 | fax: 218-237-3377



**\$399,000**  
 MLS 7002741 Residential  
 1323 Golf Course Road  
 Grand Rapids MN 55744





website: [www.AffinityRealEstate.com](http://www.AffinityRealEstate.com) | email: [info@affinityrealestate.com](mailto:info@affinityrealestate.com) | office: 218-237-3333 | fax: 218-237-3377



**\$399,000**  
MLS 7002741 Residential  
1323 Golf Course Road  
Grand Rapids MN 55744





website: [www.AffinityRealEstate.com](http://www.AffinityRealEstate.com) | email: [info@affinityrealestate.com](mailto:info@affinityrealestate.com) | office: 218-237-3333 | fax: 218-237-3377



**\$399,000**  
 MLS 7002741 Residential  
 1323 Golf Course Road  
 Grand Rapids MN 55744





website: [www.AffinityRealEstate.com](http://www.AffinityRealEstate.com) | email: [info@affinityrealestate.com](mailto:info@affinityrealestate.com) | office: 218-237-3333 | fax: 218-237-3377



**\$399,000**  
 MLS 7002741 Residential  
 1323 Golf Course Road  
 Grand Rapids MN 55744





website: [www.AffinityRealEstate.com](http://www.AffinityRealEstate.com) | email: [info@affinityrealestate.com](mailto:info@affinityrealestate.com) | office: 218-237-3333 | fax: 218-237-3377



**\$399,000**  
 MLS 7002741 Residential  
 1323 Golf Course Road  
 Grand Rapids MN 55744





website: [www.AffinityRealEstate.com](http://www.AffinityRealEstate.com) | email: [info@affinityrealestate.com](mailto:info@affinityrealestate.com) | office: 218-237-3333 | fax: 218-237-3377



**\$399,000**  
 MLS 7002741 Residential  
 1323 Golf Course Road  
 Grand Rapids MN 55744



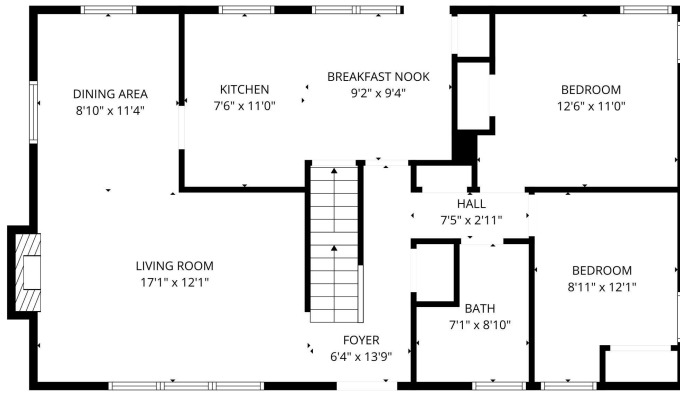


website: [www.AffinityRealEstate.com](http://www.AffinityRealEstate.com) | email: [info@affinityrealestate.com](mailto:info@affinityrealestate.com) | office: 218-237-3333 | fax: 218-237-3377

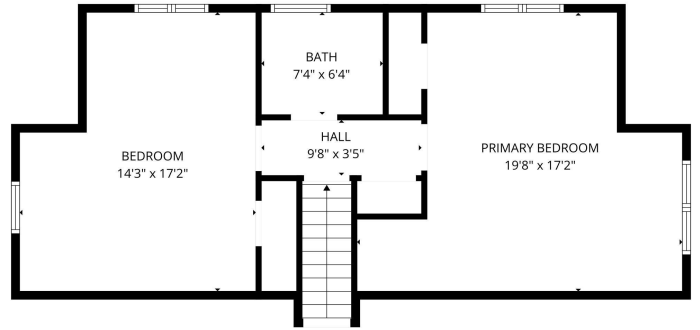


**\$399,000**  
 MLS 7002741 Residential  
 1323 Golf Course Road  
 Grand Rapids MN 55744





FLOOR PLAN CREATED BY CURICASA APP. MEASUREMENTS DEEMED HIGHLY RELIABLE BUT NOT GUARANTEED.



FLOOR PLAN CREATED BY CURICASA APP. MEASUREMENTS DEEMED HIGHLY RELIABLE BUT NOT GUARANTEED.

website: [www.AffinityRealEstate.com](http://www.AffinityRealEstate.com) | email: [info@affinityrealestate.com](mailto:info@affinityrealestate.com) | office: 218-237-3333 | fax: 218-237-3377



**\$399,000**  
 MLS 7002741 Residential  
 1323 Golf Course Road  
 Grand Rapids MN 55744